

AZTECA II



AZTECA II

SPÉCIFICATIONS.



Prix demandé
USD 20 000 000



Chantier
2005 (refitted 2023), Nereids Yachts, Greece



Longueur
49,7m



Largeur
10m



Tirant d'eau
2,8m



Tonnage brut
497



Vitesse de croisière
12 knots



Vitesse maximale
17 knots



Autonomie
5 400 nm



Pavillon
Cayman Islands



Position
North America



Classe
Bureau Veritas, Ice Class D, MCA



Designer extérieur
Michael Leach Design



Designer d'intérieur
Michael Leach Design



Construction
Hull - Steel, Superstructure - Aluminium, Deck - Teak



Équipage
12



Invités
12



Cabines
6 (4 × double, 2 × twin)



Moteurs
2 × 2 250hp Caterpillar



Propulsion
Twin screw diesel yacht

[Voir le yacht sur le site](#)

[Regarder la vidéo du yacht](#)



AZTECA II

Main deck lounge



Main deck lounge



Main deck dining



Main deck dining



AZTECA II

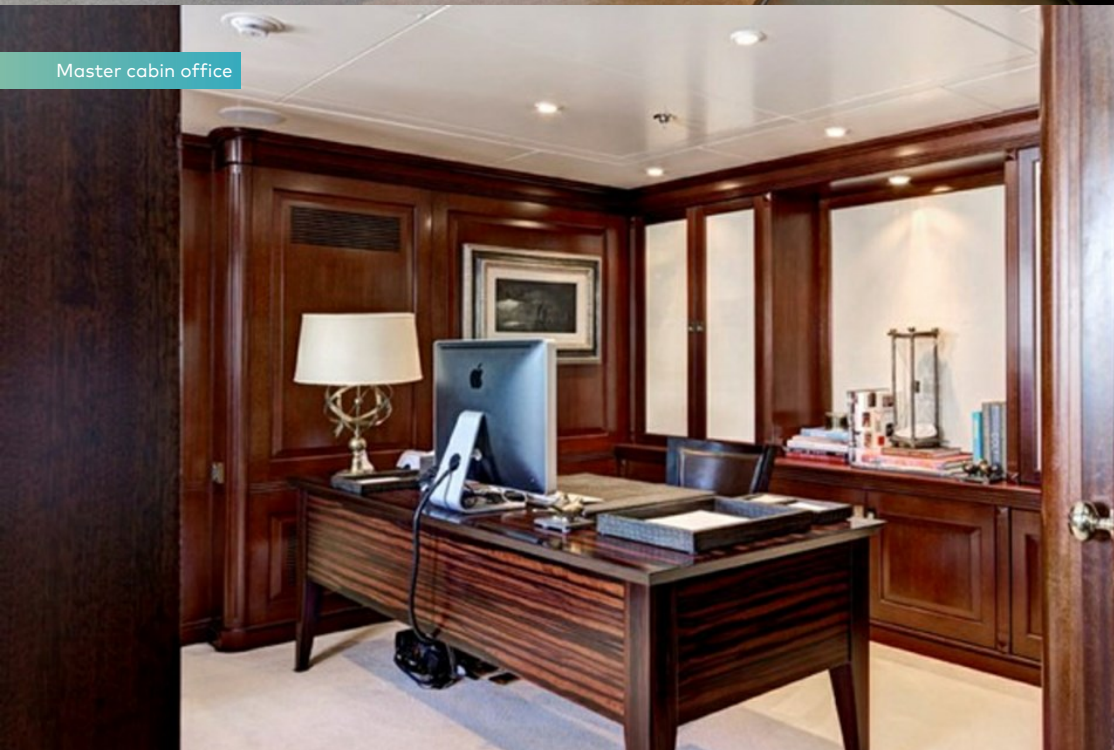
Master cabin



Master cabin



Master cabin office



Master cabin dressing room



AZTECA II

Master en suite



Main deck foyer



Master cabin



VIP cabin



AZTECA II

En suite



Guest cabin



En suite



Guest cabin



AZTECA II

Twin cabin



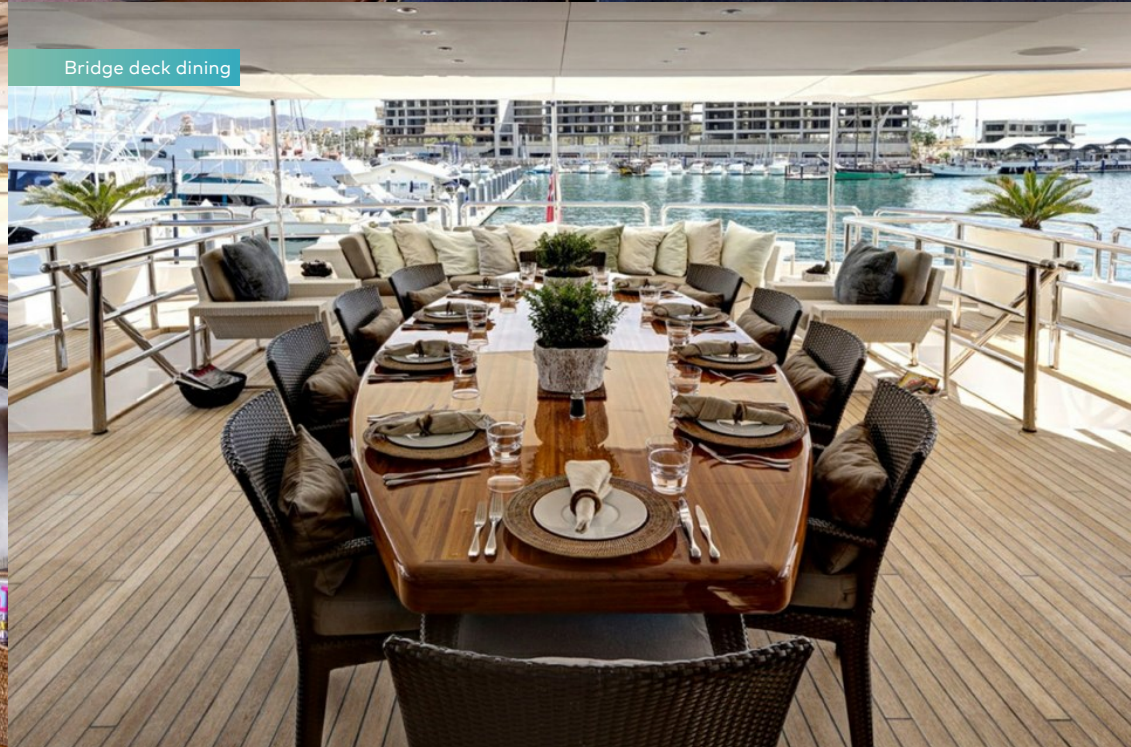
Sky lounge



Sky lounge



Bridge deck dining



BURGESS

Discover the difference.
burgessyachts.com



AZTECA II

Bridge deck aft



Bridge deck aft



Sun deck



At anchor



BURGESS

Discover the difference.
burgessyachts.com



AZTECA II

APERÇU.

Since her launch from Nereids Yachts in 2005, AZTECA II has been meticulously maintained and upgraded, including a refit in 2013, to ensure she is always in pristine condition.

Her high-volume Michael Leach designed interior successfully combines elegant style with a well-balanced layout that offers a range of guest living areas to accommodate all manner of occasions. Large windows throughout allow for spectacular views and an abundance of natural light that highlights the range of beautiful woods, fine furnishings and sumptuous fabrics on board.

AZTECA II sleeps up to 12 guests in six en suite cabins including a full-beam main deck master cabin, a full-beam VIP cabin and a further two doubles and two twins, ideal for large families. Her outdoor areas are perfectly equipped for relaxation and entertainment while at sea, in particular the large sundeck that plays host to ample sun pads, a jacuzzi, covered seating area and sun loungers.

Elsewhere on deck, guests can enjoy a number of al fresco dining options in addition to a swim platform that provides easy access to her armada of toys and tenders to include a 10.3m Bimax tender, Seadoo's, Waverunners and a jet ski.

Principales caractéristiques

High volume interior

Elegant interior by Michael Leach

Accommodation for 12 guests in six cabins

Maintained to the highest degree

BURGESS

WORLD CLASS. WORLD WIDE.

London	Monaco	New York	Miami	Singapore	Beverly Hills	Palma	Athens
+44 20 7766 4300	+377 97 97 81 21	+1 212 223 0410	+1 305 672 0150	+65 9665 8990	+1 310 424 5112	+34 971 495 413	+30 210 967 1661
Dubai	Phuket	Hong Kong	Tokyo	Sydney	Mumbai	Shanghai	
+971 4 425 5874	+66 7623 9739	+852 6496 2094	+81 46 738 8612	+61 499 945 557	+91 98211 67253	+86 187 0898 6800	

La publicité de ce(s) navire(s) dans des publications imprimées, sur Internet ou sur tout autre support n'est pas autorisée sans l'autorisation écrite préalable de Burgess.
Toutes les informations sont données de bonne foi et sont considérées comme exactes, mais elles ne peuvent être garanties.

Dernière mise à jour : 01 mai 2024