

AZTECA II



AZTECA II

SPECIFICATION.



Asking price
USD 20,000,000



Built
2005, Nereids Yachts, Greece



Length
49.7m (163ft)



Beam
10m (32.8ft)



Draft
2.8m (9.2ft)



Gross tonnage
497



Cruising speed
12 knots



Maximum speed
17 knots



Range
5,400 nm



Flag
Cayman Islands



Lying
North America



Class
Bureau Veritas, Ice Class D, MCA



Exterior designer
Michael Leach Design



Interior designer
Michael Leach Design



Construction
Hull - Steel, Superstructure - Aluminium, Deck - Teak



Crew
12



Guests
12



Cabins
6 (4 × double, 2 × twin)



Engines
2 × 2,250hp Caterpillar



Propulsion
Twin screw diesel yacht

[View yacht on website](#)



AZTECA II

Main deck lounge



Main deck lounge



Main deck dining



Main deck dining



AZTECA II

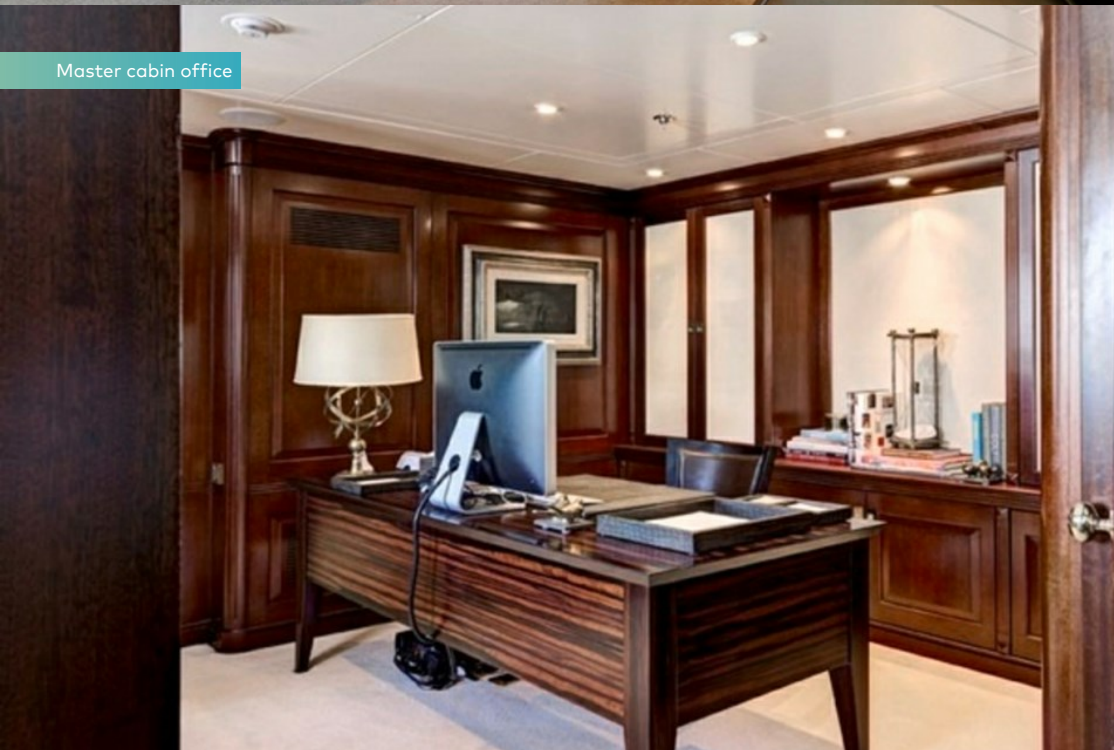
Master cabin



Master cabin



Master cabin office



Master cabin dressing room



AZTECA II

Master en suite



Main deck foyer



VIP cabin



VIP cabin



AZTECA II

VIP en suite



Guest cabin



Guest en suite



Guest cabin



AZTECA II

Guest cabin



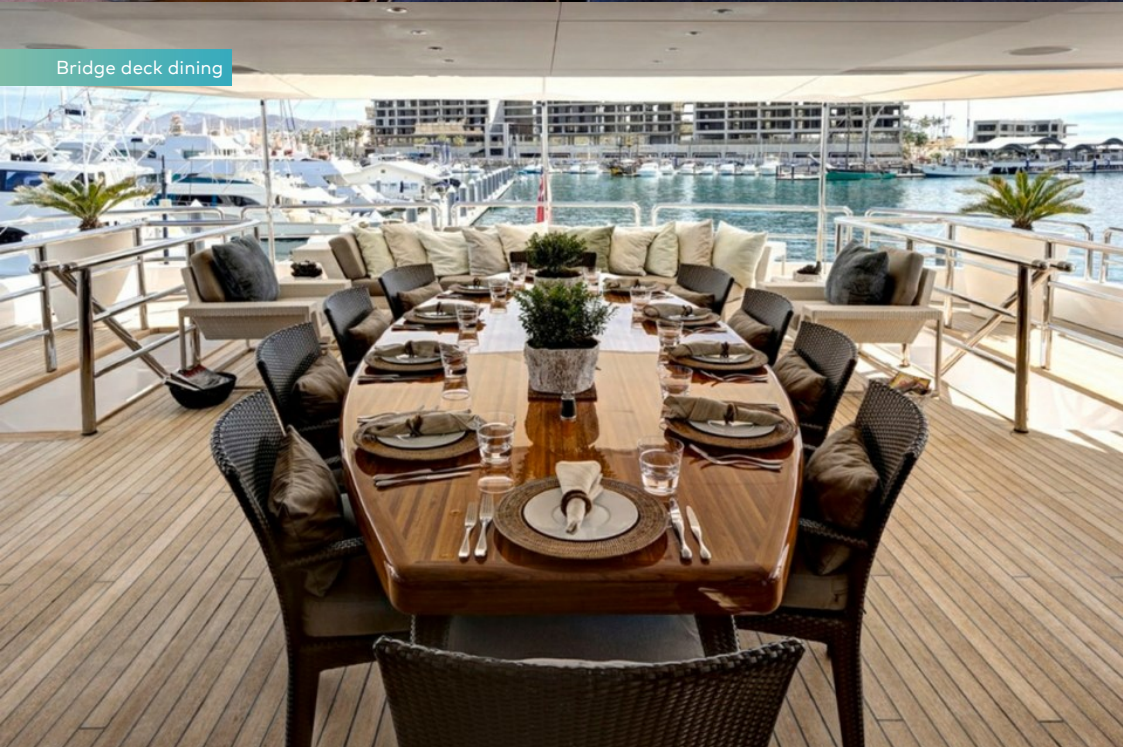
Sky lounge



Sky lounge



Bridge deck dining



AZTECA II

Bridge deck aft



Bridge deck aft



Sun deck



At anchor



AZTECA II

OVERVIEW.

Since her launch from Nereids Yachts in 2005, AZTECA II has been meticulously maintained and upgraded, including a refit in 2013, to ensure she is always in pristine condition.

Her high-volume Michael Leach designed interior successfully combines elegant style with a well-balanced layout that offers a range of guest living areas to accommodate all manner of occasions. Large windows throughout allow for spectacular views and an abundance of natural light that highlights the range of beautiful woods, fine furnishings and sumptuous fabrics on board.

AZTECA II sleeps up to 12 guests in six en suite cabins including a full-beam main deck master cabin, a full-beam VIP cabin and a further two doubles and two twins, ideal for large families. Her outdoor areas are perfectly equipped for relaxation and entertainment while at sea, in particular the large sundeck that plays host to ample sun pads, a jacuzzi, covered seating area and sun loungers.

Elsewhere on deck, guests can enjoy a number of al fresco dining options in addition to a swim platform that provides easy access to her armada of toys and tenders to include a 10.3m Bimax tender, Seadoo's, Waverunners and a jet ski.

Key features

High volume interior

Elegant interior by Michael Leach

Accommodation for 12 guests in six cabins

Maintained to the highest degree

BURGESS

WORLD CLASS. WORLD WIDE.

London +44 20 7766 4300	Monaco +377 97 97 81 21	New York +1 212 223 0410	Miami +1 305 672 0150	Singapore +65 9665 8990	Beverly Hills +1 310 424 5112	Palma +34 971 495 413	Athens +30 210 967 1661
	Dubai +971 4 425 5874	Phuket +66 7623 9739	Hong Kong +852 6496 2094	Tokyo +81 46 738 8612	Sydney +61 499 945 557	Mumbai +91 98211 67253	

Advertising of these vessel(s) in printed publications, on the internet or in any other medium is not permitted without prior written permission from Burgess. All particulars are given in good faith and are believed correct but they cannot be guaranteed.

Last updated: 01 March 2024