

AURORA



AURORA

SPÉCIFICATIONS.



Prix demandé
EUR 130 000 000



Chantier
2017, Lurssen-Werft, Germany



Longueur
74m



Largeur
13m



Tirant d'eau
3,7m



Tonnage brut
2 113



Vitesse de croisière
14 knots



Vitesse maximale
17,8 knots



Pavillon
Cook Islands



Position
East Mediterranean



Classe
C + Hull + MACH; Y AUT-UMS (Y)



Designer extérieur
Winch Design



Designer d'intérieur
Winch Design



Construction
Hull - Steel, Superstructure - Aluminium, Deck - Teak



Équipage
21



Invités
14



Cabines
7 (3 × double, 4 × twin)



Moteurs
2 × 2 682hp MTU



Propulsion
Twin screw diesel yacht

Note

Not available for sale to US residents while in US waters.

[Voir le yacht sur le site](#)

[Regarder la vidéo du yacht](#)



AURORA



BURGESS

Discover the difference.
burgessyachts.com



AURORA



BURGESS

Discover the difference.
burgessyachts.com



AURORA



BURGESS

Discover the difference.
burgessyachts.com



AURORA



BURGESS

Discover the difference.
burgessyachts.com



AURORA



AURORA



BURGESS

Discover the difference.
burgessyachts.com



AURORA



BURGESS

Discover the difference.
burgessyachts.com



AURORA



BURGESS

Discover the difference.
burgessyachts.com



AURORA



BURGESS

Discover the difference.
burgessyachts.com



AURORA



BURGESS

Discover the difference.
burgessyachts.com



AURORA

APERÇU.

AURORA is a 74m (242.8ft) motor yacht with a steel hull and an aluminium superstructure and delivered by revered German shipyard Lurssen in 2017. She is designed inside and out by multi-award-winning British studio Winch Design with Art Deco-inspired interiors.

With a beam of 13.2m (43.3ft) she has an interior volume of 2,113GT across four guest decks. An intimate top deck observation lounge has a daybed and lounge with three bar stools forward. A fully equipped aft-facing gym with two large skylights and panoramic views has sliding glass doors that open onto a terrace aft. There is a jacuzzi aft surrounded by sunpads, buffet bar to starboard and J-shaped sit-up bar to port.

The upper deck aft is all about relaxation and entertainment. A huge sun lounge aft has optional shade from a removable awning and there is dining for 12 guests with buffet bars either side. Inside there is a sit-up bar styled on 1920s motor racing and a selection of convivial lounges.

Forward is the owner's suite with wraparound views, access to a private lounge foredeck lounge and the entire expanse of teak foredeck. Including the upper deck owner's suite, she welcomes 16 guests and also accommodates up to 22 crew.

The focus of the main deck aft is a large central pool with L-shaped sofa seating either side and two buffet bars. A central staircase leads down to a large swim platform that features hydraulic bathing steps for ease of access to the water. Her tenders are stowed in the lower deck aft and launched through shell doors either side by horizontal davits.

Principales caractéristiques

Retro-classic exterior design and iconic Art Deco interior by Winch Design

German build pedigree

Large volume

Owner plus 6 cabins for 12/14 guests plus 2 x staff cabins

Privately operated, never chartered

Experienced repeat owner

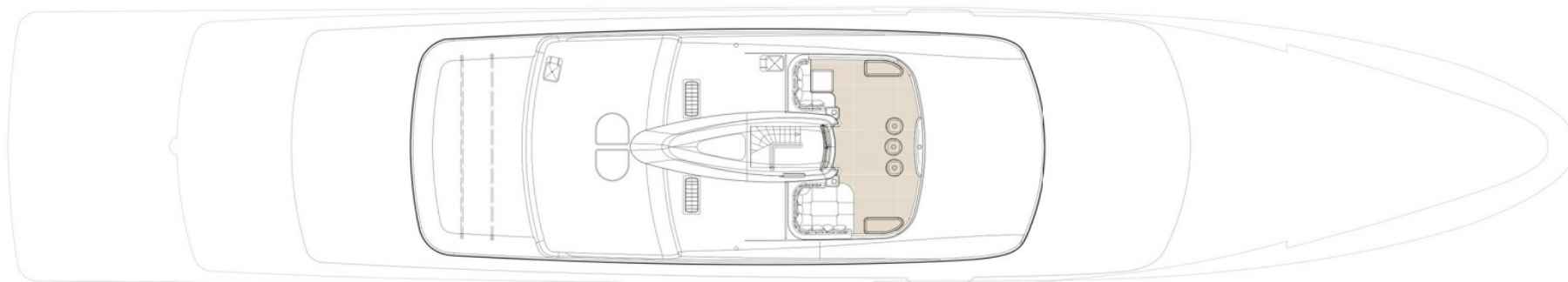
Rare modern/recently built opportunity

Heli capable (touch & go)

Annexes

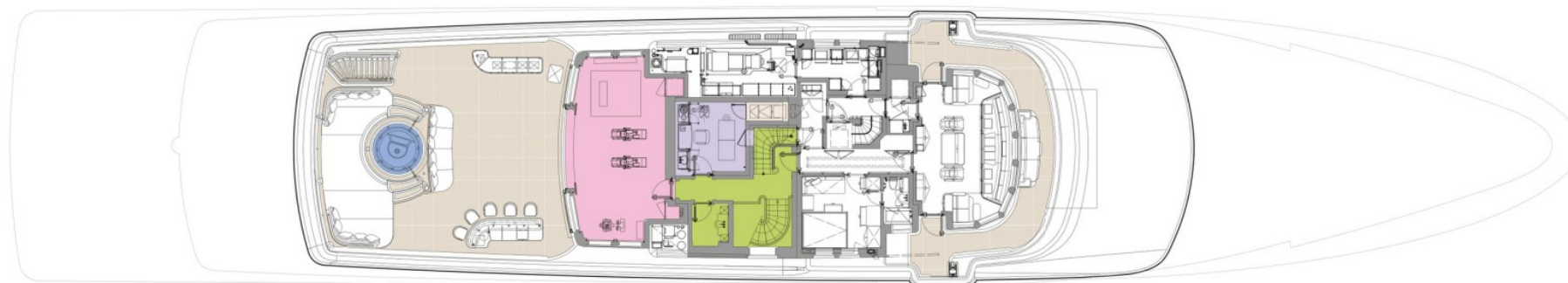
1 x 9.4m/30.8ft Hinkley type T29R 1 x 9.7m/31.8ft X-Tender type XT 157 1 x 6.3m/20.8ft Fassmer fast rescue boat (IMO/SOLAS approved)

SUN DECK



 GUEST AREAS  MASTER SUITE  GUEST CABINS  MASTER SUITE OFFICE  GYM  MASSAGE SUITE  HAMMAM  JACUZZI  POOL

BRIDGE DECK



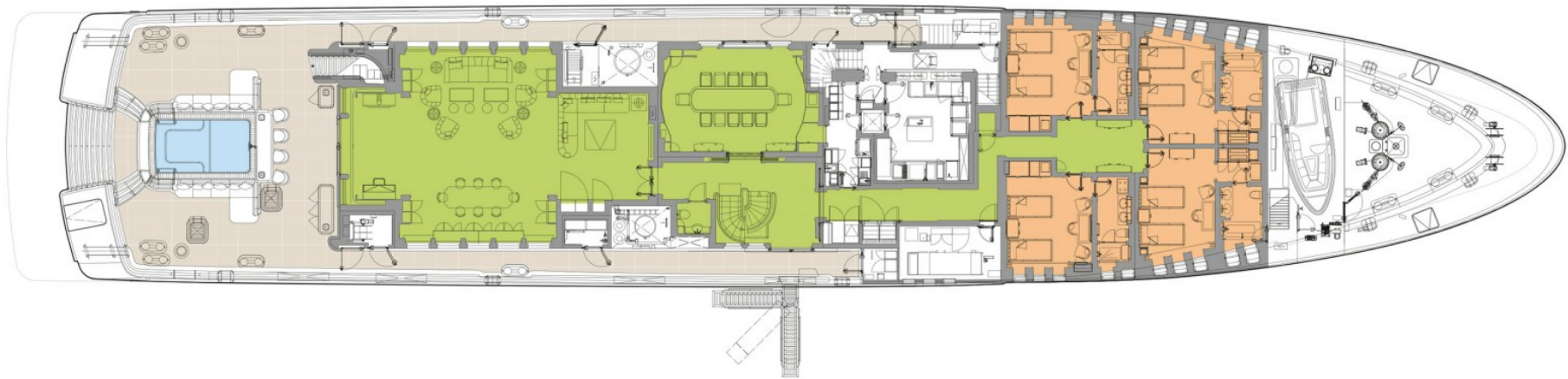
 GUEST AREAS  MASTER SUITE  GUEST CABINS  MASTER SUITE OFFICE  GYM  MASSAGE SUITE  HAMMAM  JACUZZI  POOL

OWNER'S DECK



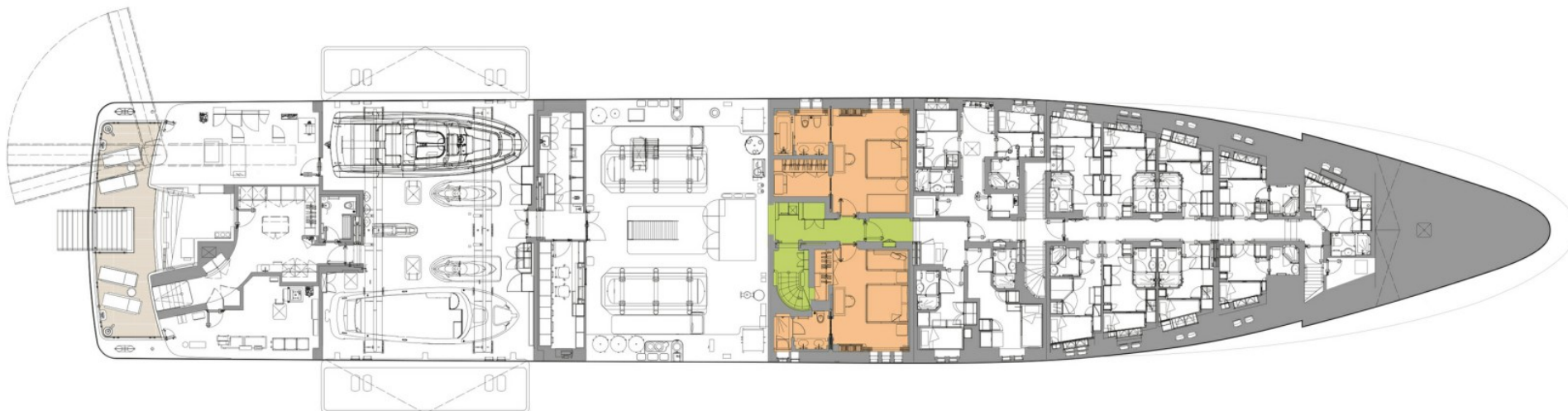
 GUEST AREAS  MASTER SUITE  GUEST CABINS  MASTER SUITE OFFICE  GYM  MASSAGE SUITE  HAMMAM  JACUZZI  POOL

MAIN DECK



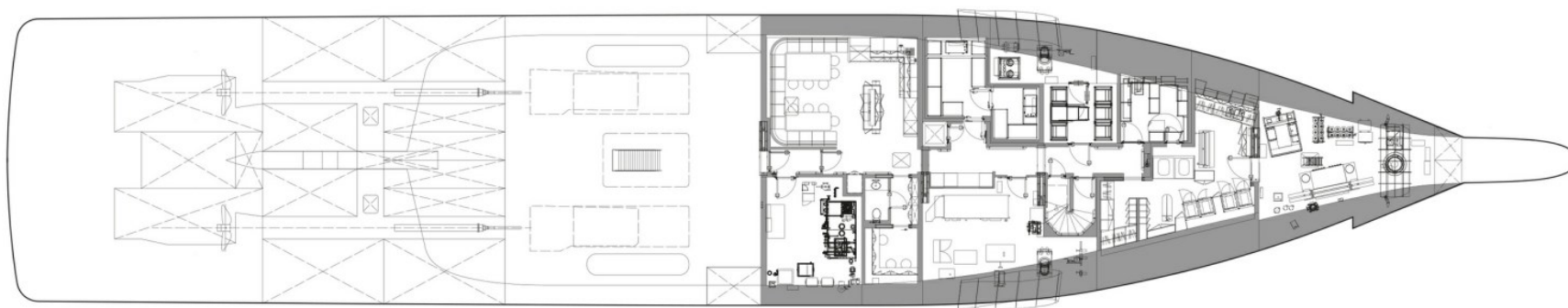
■ GUEST AREAS ■ MASTER SUITE ■ GUEST CABINS ■ MASTER SUITE OFFICE ■ GYM ■ MASSAGE SUITE ■ HAMMAM ■ JACUZZI ■ POOL

LOWER DECK



 GUEST AREAS  MASTER SUITE  GUEST CABINS  MASTER SUITE OFFICE  GYM  MASSAGE SUITE  HAMMAM  JACUZZI  POOL

TANK DECK



 GUEST AREAS  MASTER SUITE  GUEST CABINS  MASTER SUITE OFFICE  GYM  MASSAGE SUITE  HAMMAM  JACUZZI  POOL

BURGESS

WORLD CLASS. WORLD WIDE.

London +44 20 7766 4300	Monaco +377 97 97 81 21	New York +1 212 223 0410	Miami +1 305 672 0150	Singapore +65 9665 8990	Beverly Hills +1 310 424 5112	Palma +34 971 495 413	Athens +30 210 967 1661
	Dubai +971 4 425 5874	Phuket +66 7623 9739	Hong Kong +852 6496 2094	Tokyo +81 46 738 8612	Sydney +61 499 945 557	Mumbai +91 98211 67253	

La publicité de ce(s) navire(s) dans des publications imprimées, sur Internet ou sur tout autre support n'est pas autorisée sans l'autorisation écrite préalable de Burgess.
Toutes les informations sont données de bonne foi et sont considérées comme exactes, mais elles ne peuvent être garanties.

Dernière mise à jour : 01 mars 2024