


ATLAS



ATLAS


SPECIFICATIONS.


 Prix demandé
EUR 4 250 000


 Chantier
2000 (refitted 2021), Ocean Pacifico Services, Philippines

 Longueur
38m

 Largeur
7m

 Tirant d'eau
2,8m

 Tonnage brut
272


 Vitesse de croisière
10 knots


 Vitesse maximale
12,5 knots


 Autonomie
4 400 nm at 10 knots

 Pavillon
Jersey

 Position
West Mediterranean

 Classe
RINA Services S.p.A. (RINA) +100 A1 YACHT + MCA Compliant

 Designer extérieur
Diana Yacht Design B.V.

 Designer d'intérieur
Diana Yacht Design

 Construction
Hull - Steel, Superstructure - Aluminium, Deck - Australian Beech Wood

 Équipage
7

 Invités
10

 Cabines
5 (4 × double, 1 × twin)

 Moteurs
2 × 610hp Caterpillar

 **2 × Caterpillar**

 Propulsion
Twin screw diesel yacht

Note

Not available for sale to US residents while in US waters.

[Voir le yacht sur le site](#)



ATLAS



BURGESS

Discover the difference.
burgessyachts.com



ATLAS



BURGESS

Discover the difference.
burgessyachts.com



ATLAS



BURGESS

Discover the difference.
burgessyachts.com



ATLAS



BURGESS

Discover the difference.
burgessyachts.com



ATLAS



BURGESS

Discover the difference.
burgessyachts.com



ATLAS

APERÇU.

ATLAS is a 38m (124.7ft) displacement yacht built by Ocean Pacifico in 2000. She has a steel hull and aluminium superstructure and has a gross tonnage of 272GT. Her exterior and interior designs were by the Dutch company Diana Yacht Design. She is RINA classed, built to Lloyds +100 A1 Yacht classification and refitted in 2021

ATLAS's sun deck has a raised jacuzzi forward of the radar and communications mast, there is seating outboard with more in an L-shaped beach seating configuration to port. To starboard is a sunpad. The upper deck has walkaround side decks with a boat deck aft, when not storing tenders and PWC the area can be converted to an al fresco lounge and sun lounge area. The main deck also has high-bulwarked walkaround side decks. There is forward-facing seating on the foredeck, while aft, is the cockpit with U-shaped seating around a large dining table that forms a shaded al fresco formal dining area.

ATLAS can accommodate 10 guests in five cabins. The owner's suite is on the main deck, the guest accommodation is on the lower deck, aft of the midships engine room. Forward of the engine room, is the crew mess and accommodation. There are four guest suites made of one double VIP cabin, two double cabins and one twin-berth cabin. All guest suites have en suite facilities. On the main deck, the owner's suite is forward, it features a forward-facing king-sized berth with a large en suite bathroom with his and hers sinks. Aft of the owner's suite one finds the galley, day heads and entrance foyer. The Main saloon is aft if has a formal dining area, forward, with sofa seating aft. The upper deck has a forward wheelhouse with captain's cabin and sky lounge aft.

She had a boat deck on her upper deck with tender and PWC launched via deck crane.

ATLAS is powered by two Caterpillar V12 3412 DITA diesel engines, these give her a cruising speed of 10 knots and a maximum speed of 12.5 knots. She has a cruising range of 2,500nm at 10knots.

Principales caractéristiques

Interiors & Exteriors designed by Diana Yacht Design

Refitted in 2021

Accommodation for 10 guests in five cabins

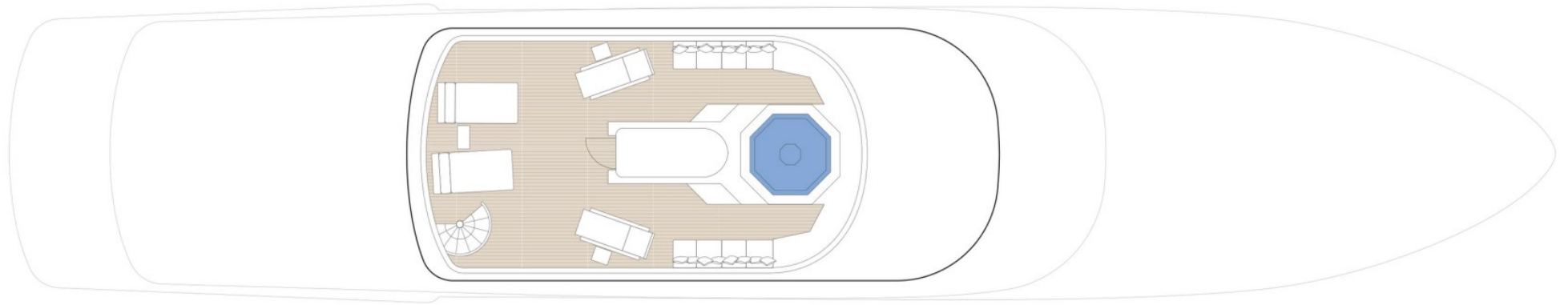
Raised jacuzzi on sun deck forward

Large swim platform

Cruising range of 2,500 nm at 10 knots

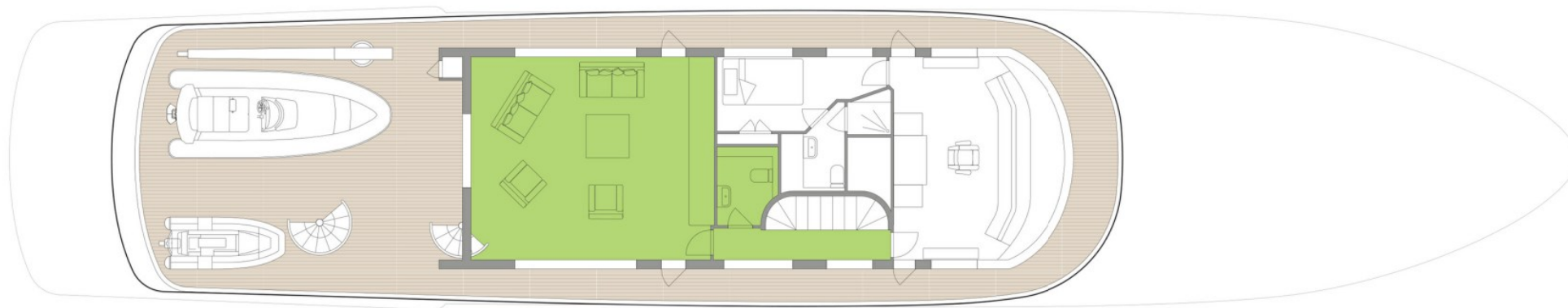
Cruising speed of 10 knots and maximum speed of 12.5 knots

SUN DECK



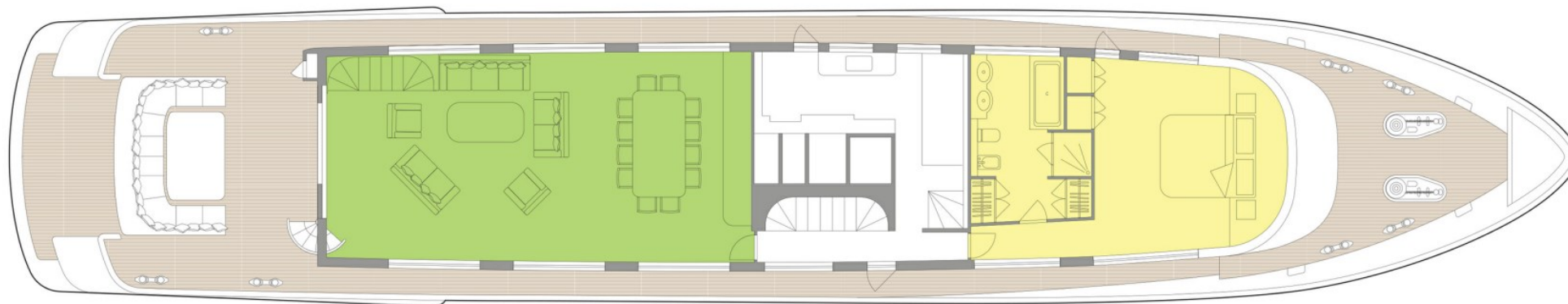
 GUEST AREAS  MASTER SUITE  GUEST CABINS  JACUZZI

BRIDGE DECK



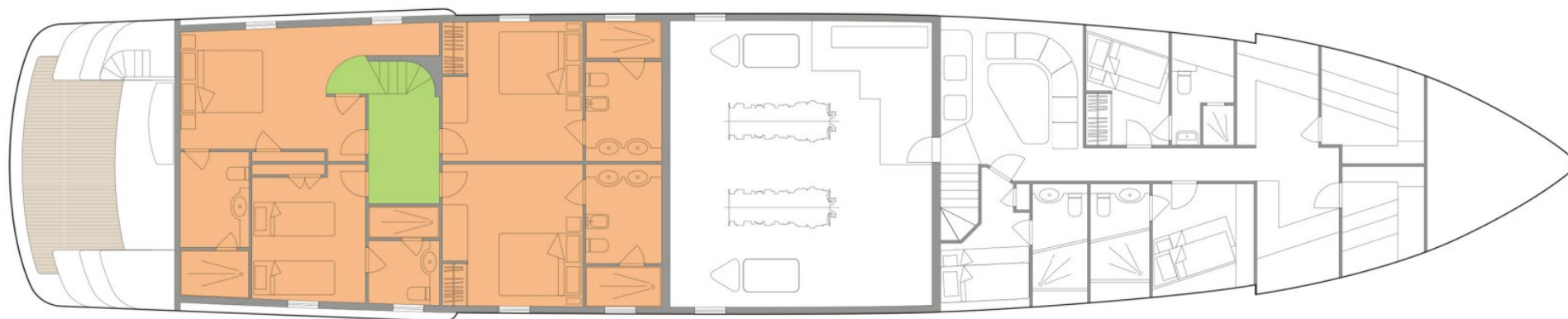
 GUEST AREAS  MASTER SUITE  GUEST CABINS  JACUZZI

MAIN DECK



 GUEST AREAS  MASTER SUITE  GUEST CABINS  JACUZZI

CABIN DECK



 GUEST AREAS  MASTER SUITE  GUEST CABINS  JACUZZI

BURGESS

WORLD CLASS. WORLD WIDE.

London +44 20 7766 4300	Monaco +377 97 97 81 21	New York +1 212 223 0410	Miami +1 305 672 0150	Singapore +65 9665 8990	Beverly Hills +1 310 424 5112	Palma +34 971 495 413	Athens +30 210 967 1661
Dubai +971 4 425 5874	Phuket +66 7623 9739	Hong Kong +852 6496 2094	Tokyo +81 46 738 8612	Sydney +61 499 945 557	Mumbai +91 98211 67253	Shanghai +86 159 0162 1898	Rio de Janeiro +55 21 2553-3238
Aspen +1 970 710 2294							

La publicité de ce(s) navire(s) dans des publications imprimées, sur Internet ou sur tout autre support n'est pas autorisée sans l'autorisation écrite préalable de Burgess.
Toutes les informations sont données de bonne foi et sont considérées comme exactes, mais elles ne peuvent être garanties.

Dernière mise à jour : 02 juillet 2025