

A large, multi-masted sailboat with white sails is sailing on a deep blue ocean under a clear sky. The boat has a dark hull and a white cabin. A red Union Jack flag is flying from the stern. The word "ASOLARE" is written in white capital letters across the top of the image.

ASOLARE

ASOLARE

APERÇU.

Sail the Bahamas, Caribbean or Mediterranean in grand style aboard a beautiful cruising ketch that combines classic yachting elegance, cutting-edge technology, superb stability and sensational sailing performance. Ideal for a romantic getaway and perfect for a family charter holiday, ASOLARE is a 47m (155ft) modern sailing yacht hand built from the finest traditional materials – 600-year-old Douglas fir and 300-year-old western cedar – by real master craftsmen. She's also impressively spacious and comfortable with an exquisitely detailed interior design by Andrew Winch.

The accommodation on board includes a full beam master suite with his and hers bathrooms – plus his and hers office/lounge rooms, too – and direct deck access to a private and sheltered deck lounge where a couple can slip away to share champagne on ice. The two other guest cabins are identical: brightly lit twin cabins fitted out in finely crafted blond sycamore wood. There's ample indoor space for intimate or sociable relaxation in two large, luxurious, lounges: a cosy lounge on the lower level with an elegant dining area, and a snug deckhouse above with comfy seats and breathtaking panoramic views.

Step out on deck into the spacious guest lounge for an al fresco breakfast as you enjoy the warm, balmy breeze and then gather around a table to plan the day's cruising with the skipper. Sailing enthusiasts will relish taking the helm of this thoroughbred yacht and revel in her sparkling performance with an expert crew on hand, while non-sailing guests relax in the safe, comfortable deck lounge and take in the view, lounge on cushions the huge foredeck, or try their hand at fishing.

You can drop anchor off a deserted beach for a memorable lunch – perhaps fish you've just caught, expertly grilled – and then run ashore in the tender for a stroll on white coral sand with nobody else's footprints in sight. Or you could up the adrenaline with a waterskiing and wakeboarding session. There's also the option to take to the water in kayaks and paddleboards – or just dive in and explore with a mask and snorkel.

Back on board, it's time to set sail again and point her beautiful bow towards this evening's destination and enjoy the unique sensations of a sail-powered superyacht. As the sun slides over the yard arm, the anchor goes down and the evening starts with a cocktail. There's a hi-spec AV system on board, of course, or you could just watch the sunset.

Principales caractéristiques

Recently refit

Regularly maintained

Shaded deck dining area

ASOLARE

External shot



Main deck



Main dining area



Main deck aft



BURGESS

Discover the difference.
burgessyachts.com



ASOLARE

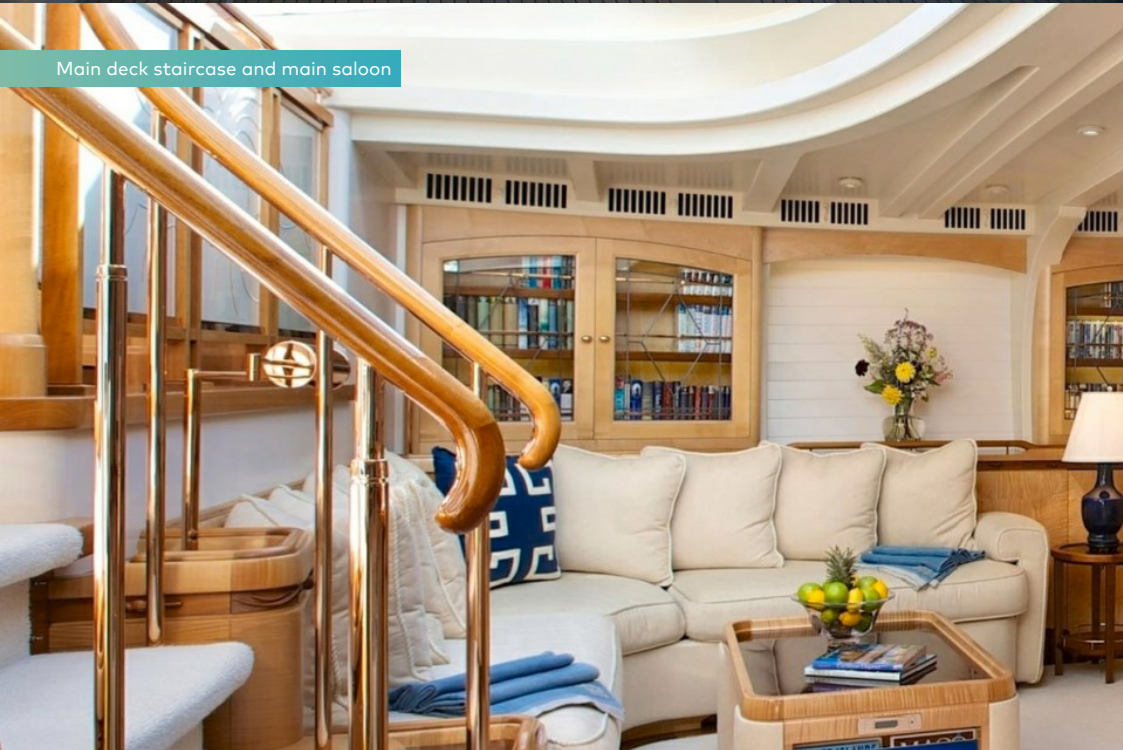
Foredeck



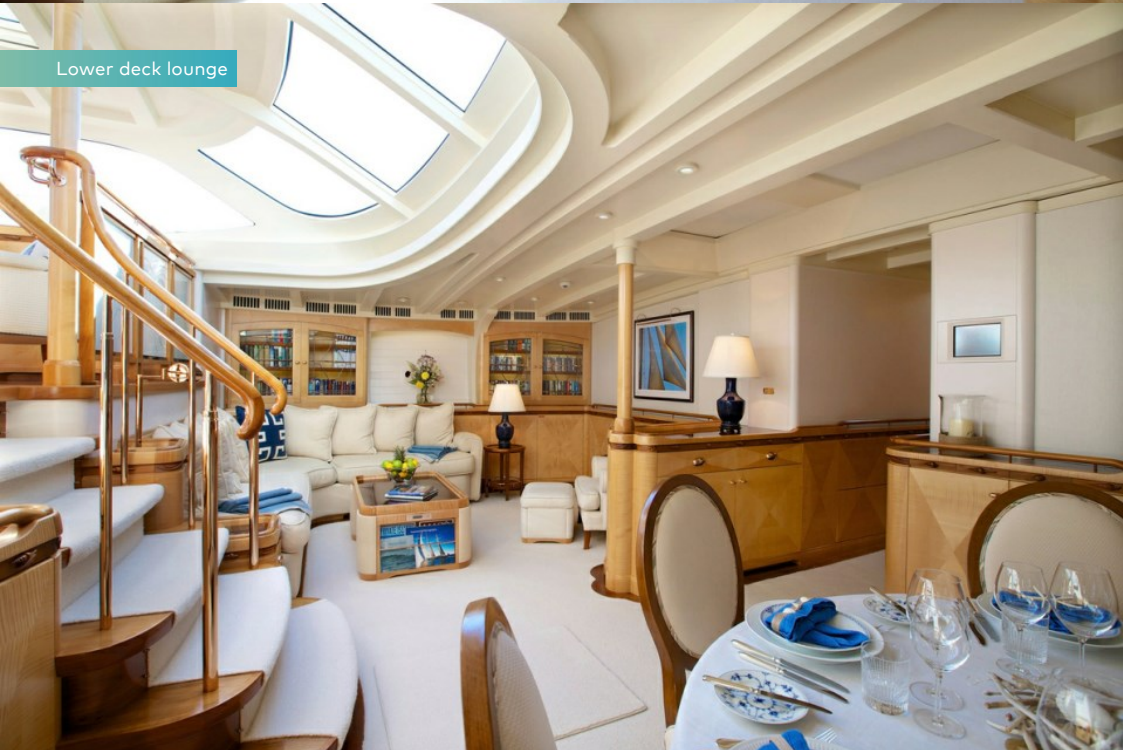
Lower deck lounge



Main deck staircase and main saloon



Lower deck lounge



BURGESS

Discover the difference.
burgessyachts.com



ASOLARE

Main deck lounge



Master cabin



Twin cabin



Double cabin



ASOLARE SPÉCIFICATIONS.



Longueur
47,2m



Chantier
2003 (refitted 2020), Hodgdon Yachts, United States Of America



Designer d'intérieur
Winch Design



Largeur
8,7m



Tirant d'eau min / max
4,9m/4,9m



Déplacement
287 tonnes



Vitesse de croisière
11 knots



Vitesse maximale
12 knots



Consommation de carburant en vitesse de croisière
64 litres par heure



Moteurs
1 x 960hp Detroit Diesel/MTU



Invités
8



Nb de cabines invités
4 (2 x double, 2 x twin, 1 x additional berths)



Équipage
6

Note

Registered under the Yacht Engaged in Trade scheme (YET). All Mediterranean charters must start in either the South of France, Monaco or Corsica. For all charters, the principal charterer must be a non-EU resident.

[Voir le yacht sur le site](#)



Annexes & jeux nautiques



1 x Tender



1 x Sailing dinghy



2 x SeaBobs



2 x Stand up paddleboards



Wakeboard



Waterskis



Inflatable tows



Scuba diving equipment



Fishing gear



Snorkelling gear

BURGESS

WORLD CLASS. WORLD WIDE.

London +44 20 7766 4300	Monaco +377 97 97 81 21	New York +1 212 223 0410	Miami +1 305 672 0150	Singapore +65 9665 8990	Beverly Hills +1 310 424 5112	Palma +34 971 495 413	Athens +30 210 967 1661
	Dubai +971 4 425 5874	Phuket +66 7623 9739	Hong Kong +852 6496 2094	Tokyo +81 46 738 8612	Sydney +61 499 945 557	Mumbai +91 98211 67253	

La publicité de ce(s) navire(s) dans des publications imprimées, sur Internet ou sur tout autre support n'est pas autorisée sans l'autorisation écrite préalable de Burgess.
Toutes les informations sont données de bonne foi et sont considérées comme exactes, mais elles ne peuvent être garanties.

Dernière mise à jour : 01 mars 2024