

# ARROW

---



ARROW

# APERÇU.

The 75m 2020 Feadship ARROW is the latest superyacht from the reputable Dutch builder to enter the charter market and her sensational spaces inside and out blow other yachts out of the water.

With interior and exterior design by H2, ARROW yacht (formerly known as Project 703) is a glossy and state-of-the-art yacht that combines supreme build quality with plenty of room for socialising and entertaining. From the off, the scene is set in the main salon with lots of varnished teak and backlit marble creating a lavish lounge, where offset settees curve into each for a more intimate atmosphere.

Formal dining for 12 round a glass table lies beyond and further still there's a cinema area with surround sound. Up in the bridge deck sky lounge, doors open up to the aft terrace seamlessly, where guests can enjoy alfresco dining under the protection of retractable glass panels or chill out in the lounge area aft and enjoy enviable vistas through the infinity view glass bulwarks.

An ARROW yacht charter can accommodate 12 guests across six cabins, including a main deck master, a bridge deck VIP and three further doubles and a twin cabin on the lower deck. Charter guests will love her exquisite sun deck, with its partially transparent Jacuzzi with sunpads forward, pizza oven and barbecue area, gym – which can be either open or enclosed – a cool sit-up bar and lots of lounging options, including C-shaped sofas aft with more infinity views.

However, ARROW yacht's standout feature is surely her full-beam beach club, which transforms into a sea-level evening entertaining lounge. There's a bar, lots of seating and access to the massage room and steam shower. And, of course, during the day this is the hub of activity for guests who want to try out the plethora of water toys or hop aboard one of three tenders. Guests on an ARROW yacht charter can expect the highest levels of quality and service, while a glass elevator from the lower deck to the bridge deck makes it an ideal base for multigenerational charters. With stabilisers at anchor and underway, ARROW yacht assures a smooth charter and your guests will want for nothing.

## Principales caractéristiques

---

Beach club at sea level

---

Spa facilities: massage room, steam room

---

Masseuse part of the crew

---

Fully equipped glass gym with panoramic views on sun deck

---

Elevator serving the lower to bridge decks

---

Jacuzzi on the sun deck

---

Zero speed stabilisers to reduce any rolling motion while at anchor

---

Flexible cabin configurations

---

ARROW

Cruising



Aerial view



At anchor



Aerial view



BURGESS

Discover the difference.  
burgessyachts.com



ARROW

Sun deck jacuzzi



Sun deck jacuzzi



Sun deck



Sun deck



BURGESS

Discover the difference.  
burgessyachts.com

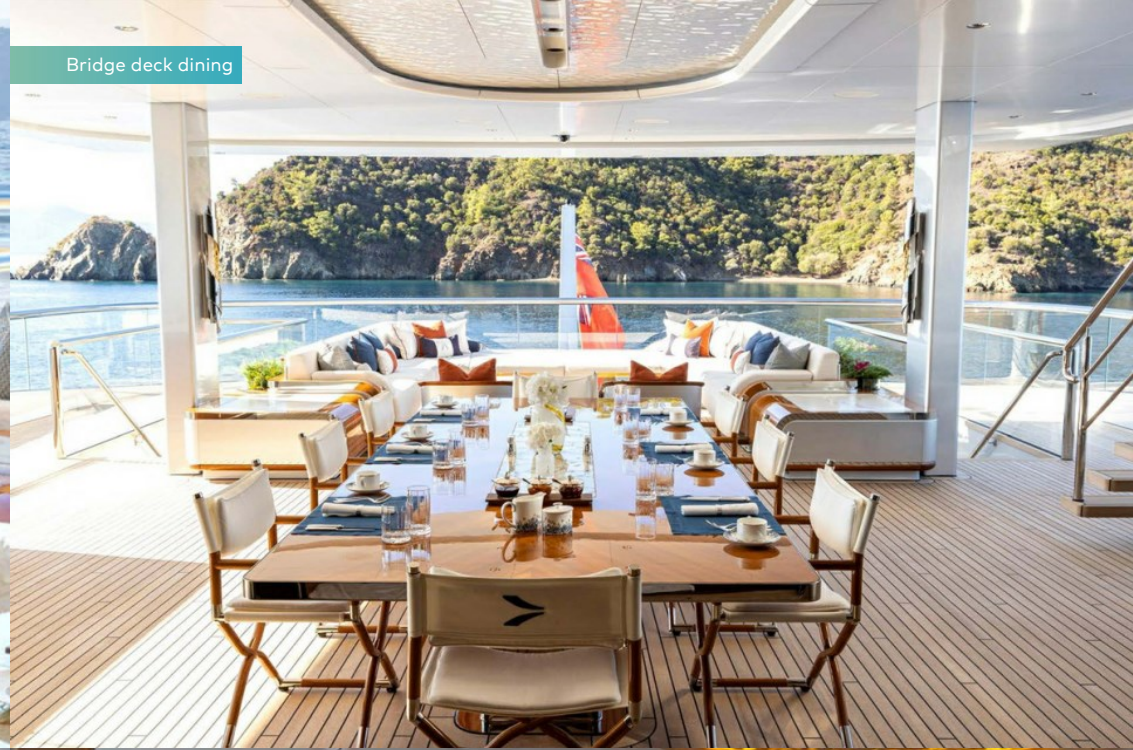


ARROW

Bridge deck dining



Bridge deck dining



Bridge deck dining



Bridge deck aft



ARROW

Beach club



Beach club



Beach club



Beach club



BURGESS

Discover the difference.  
burgessyachts.com



ARROW

Main deck lounge



Main deck lounge



Cinema



Main deck dining



ARROW

Sky lounge



Master cabin - Main deck



Master cabin study - Main deck



Master cabin en suite



BURGESS

Discover the difference.  
burgessyachts.com





ARROW

Master cabin en suite



VIP Cabin - Bridge deck



Double cabin - Lower deck



Twin Cabin - Lower deck



ARROW

Spa facilities



Spa facilities



Lifestyle



Lifestyle



BURGESS

Discover the difference.  
burgessyachts.com



ARROW

# SPÉCIFICATIONS.



Longueur  
75m



Chantier  
2020, Feadship, De Vries, The Netherlands



Designer d'intérieur  
H2 Yacht Design



Largeur  
12,9m



Tirant d'eau  
3,8m



Tonnage brut  
1 891



Vitesse de croisière  
13 knots



Vitesse maximale  
17 knots



Consommation de carburant en vitesse de croisière  
480 litres par heure



Moteurs  
2 x 2 467hp MTU



Invités  
12



Nb de cabines invités  
6 (5 x double, 1 x twin, 2 x additional berths)



Équipage  
19

[Voir le yacht sur le site](#)

[Regarder la vidéo du yacht](#)



## Annexes & jeux nautiques

---



2 x Tenders



1 x Deck jacuzzi



Anti-jellyfish pool



Trampoline



RYA training centre for jetskis & waverunners



2 x Waverunners



1 x Stand up jetski



2 x SeaBobs



1 x Jetsurf



2 x eFoil



2 x Subwings



2 x Kayaks



4 x Stand up paddleboards



Wakeboard



Waterskis



Inflatable tows



Scuba diving equipment



Snorkelling gear

# Remise en forme & bien-être



Cross trainer



Exercise balls



Free weights



Jump ropes



Multi gym



Training bench



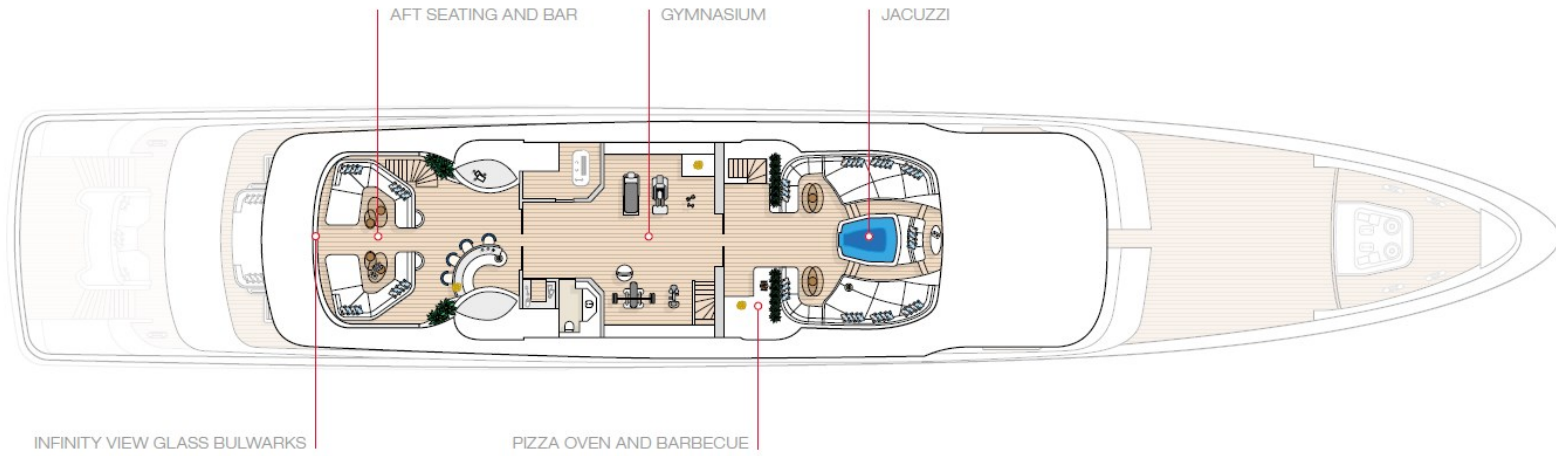
Treadmill



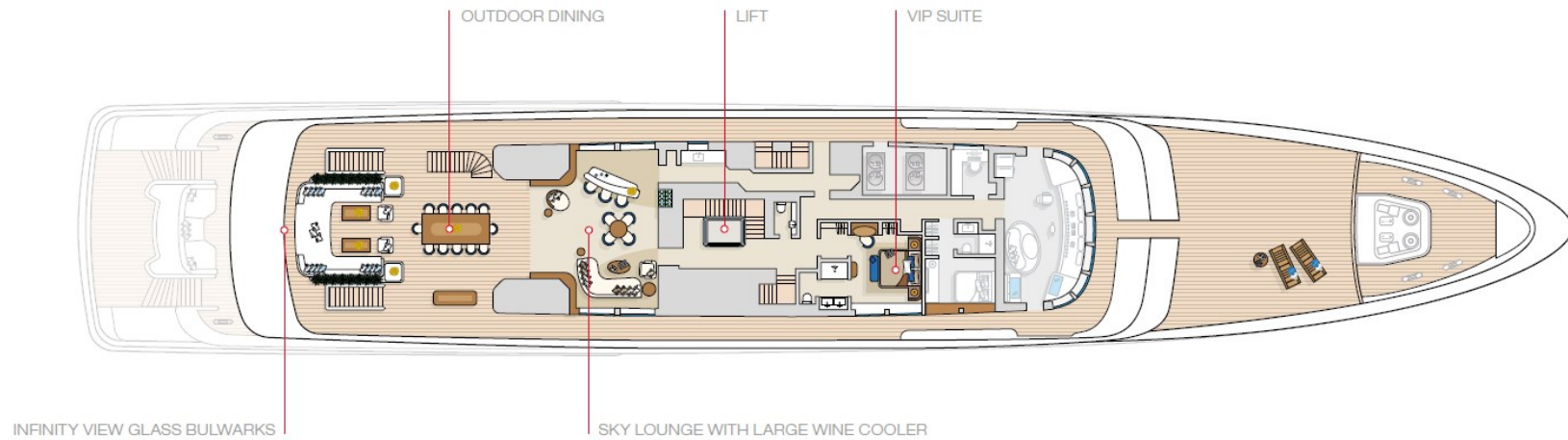
Yoga mats



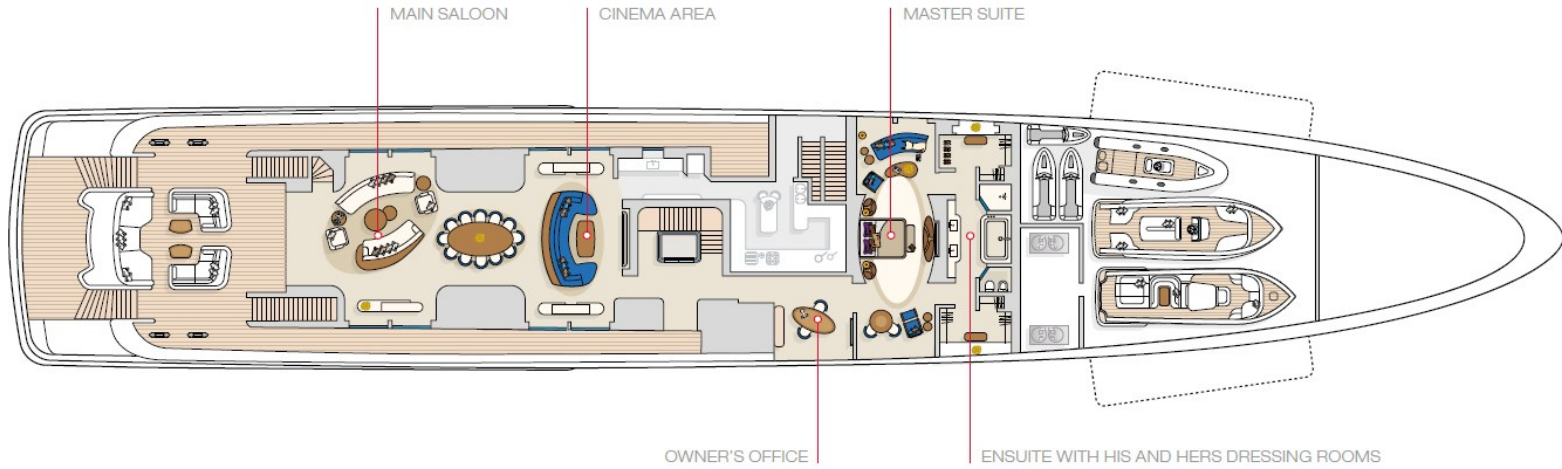
### Sun Deck



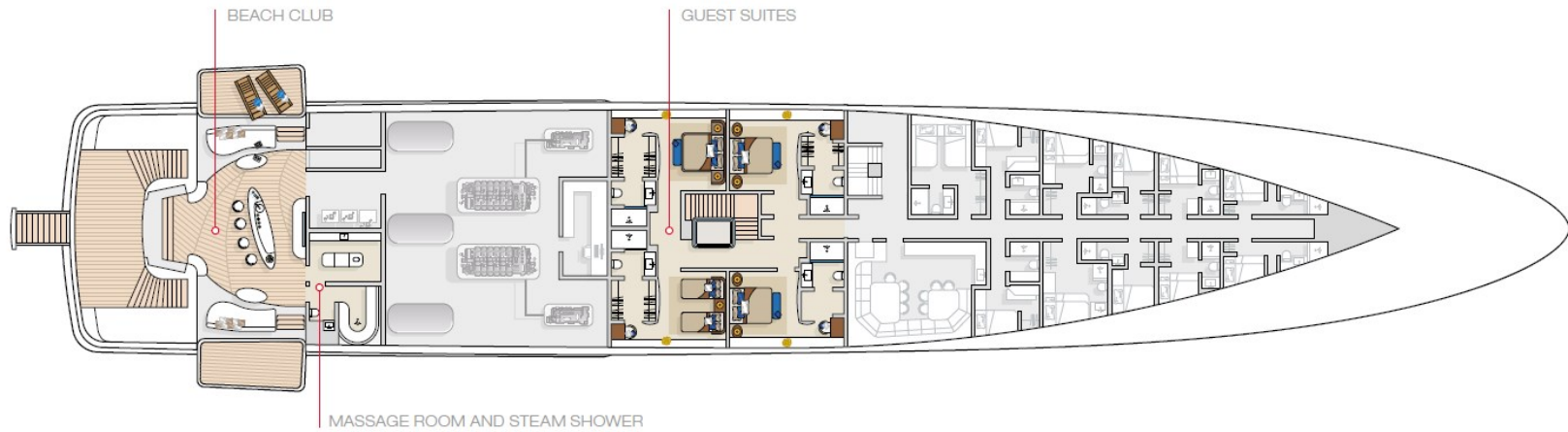
### Bridge Deck



# Main Deck



# Lower Deck



BURGESS

WORLD CLASS.  
WORLD WIDE.

London	Monaco	New York	Miami	Singapore	Beverly Hills	Palma	Athens
+44 20 7766 4300	+377 97 97 81 21	+1 212 223 0410	+1 305 672 0150	+65 9665 8990	+1 310 424 5112	+34 971 495 413	+30 210 967 1661
Dubai	Phuket	Hong Kong	Tokyo	Sydney	Mumbai	Shanghai	
+971 4 425 5874	+66 7623 9739	+852 6496 2094	+81 46 738 8612	+61 499 945 557	+91 98211 67253	+86 187 0898 6800	

La publicité de ce(s) navire(s) dans des publications imprimées, sur Internet ou sur tout autre support n'est pas autorisée sans l'autorisation écrite préalable de Burgess.  
Toutes les informations sont données de bonne foi et sont considérées comme exactes, mais elles ne peuvent être garanties.

Dernière mise à jour : 29 avril 2024