

ARROW



ARROW

OVERVIEW.

The 75m 2020 Feadship ARROW is the latest superyacht from the reputable Dutch builder to enter the charter market and her sensational spaces inside and out blow other yachts out of the water.

With interior and exterior design by H2, ARROW yacht (formerly known as Project 703) is a glossy and state-of-the-art yacht that combines supreme build quality with plenty of room for socialising and entertaining. From the off, the scene is set in the main salon with lots of varnished teak and backlit marble creating a lavish lounge, where offset settees curve into each for a more intimate atmosphere.

Formal dining for 12 round a glass table lies beyond and further still there's a cinema area with surround sound. Up in the bridge deck sky lounge, doors open up to the aft terrace seamlessly, where guests can enjoy alfresco dining under the protection of retractable glass panels or chill out in the lounge area aft and enjoy enviable vistas through the infinity view glass bulwarks.

An ARROW yacht charter can accommodate 12 guests across six cabins, including a main deck master, a bridge deck VIP and three further doubles and a twin cabin on the lower deck. Charter guests will love her exquisite sun deck, with its partially transparent Jacuzzi with sunpads forward, pizza oven and barbecue area, gym – which can be either open or enclosed – a cool sit-up bar and lots of lounging options, including C-shaped sofas aft with more infinity views.

However, ARROW yacht's standout feature is surely her full-beam beach club, which transforms into a sea-level evening entertaining lounge. There's a bar, lots of seating and access to the massage room and steam shower. And, of course, during the day this is the hub of activity for guests who want to try out the plethora of water toys or hop aboard one of three tenders. Guests on an ARROW yacht charter can expect the highest levels of quality and service, while a glass elevator from the lower deck to the bridge deck makes it an ideal base for multigenerational charters. With stabilisers at anchor and underway, ARROW yacht assures a smooth charter and your guests will want for nothing.

Key features

Beach club at sea level

Spa facilities: massage room, steam room

Masseuse part of the crew

Fully equipped glass gym with panoramic views on sun deck

Elevator serving the lower to bridge decks

Jacuzzi on the sun deck

Zero speed stabilisers to reduce any rolling motion while at anchor

Flexible cabin configurations

ARROW

Cruising



Aerial view



At anchor



Aerial view



BURGESS

Discover the difference.
burgessyachts.com



ARROW

Sun deck jacuzzi



Sun deck jacuzzi



Sun deck



Sun deck



BURGESS

Discover the difference.
burgessyachts.com

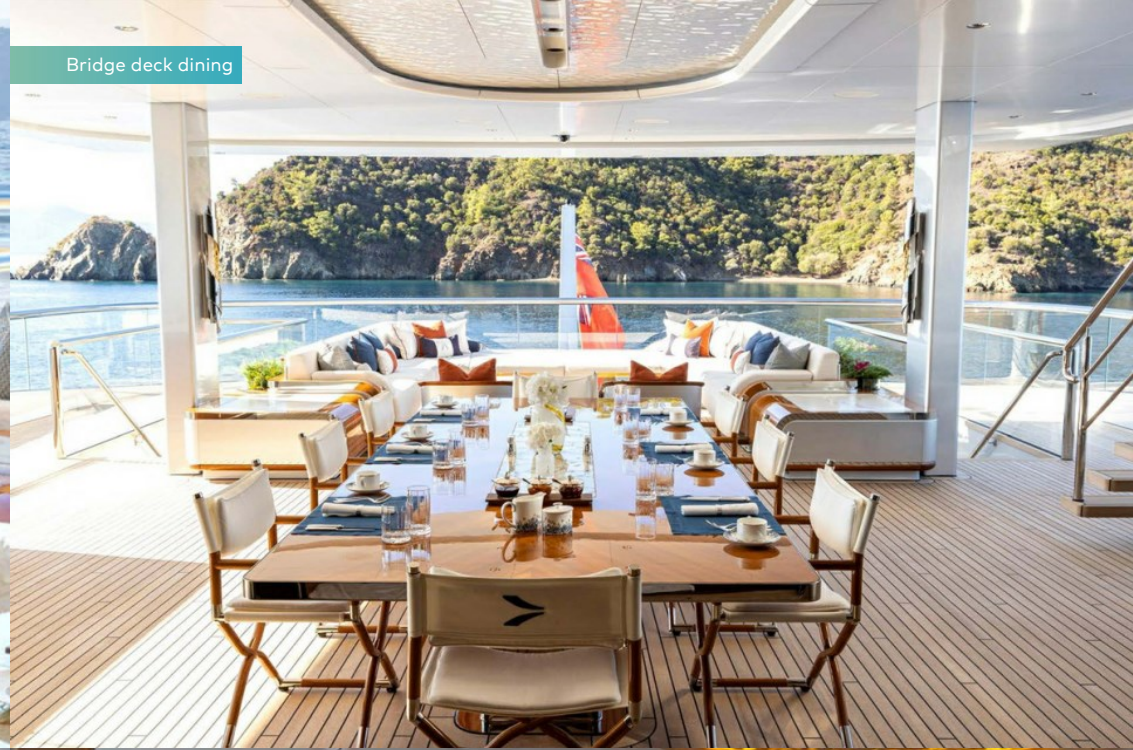


ARROW

Bridge deck dining



Bridge deck dining



Bridge deck dining



Bridge deck aft



BURGESS

Discover the difference.
burgessyachts.com



ARROW

Beach club



Beach club



Beach club



Beach club



BURGESS

Discover the difference.
burgessyachts.com



ARROW

Main deck lounge



Main deck lounge



Cinema



Main deck dining



ARROW

Sky lounge



Master cabin - Main deck



Master cabin study - Main deck



Master cabin en suite



ARROW

Master cabin en suite



VIP Cabin - Bridge deck



Double cabin - Lower deck



Twin Cabin - Lower deck



ARROW

Spa facilities



Spa facilities



Lifestyle



Lifestyle



BURGESS

Discover the difference.
burgessyachts.com



ARROW

SPECIFICATION.



Length
75m (246ft)



Built
2020, Feadship, De Vries, The Netherlands



Interior designer
H2 Yacht Design



Beam
12.9m (42.3ft)



Draft
3.8m (12.5ft)



Gross tonnage
1,891



Cruising speed
13 knots



Maximum speed
17 knots



Fuel consumption at cruising speed
480 litres per hour



Engines
2 x 2,467hp MTU



Guests
12



No. of guest cabins
6 (5 x double, 1 x twin, 2 x additional berths)



Crew
19

[View yacht on website](#)

[Watch yacht video](#)



EQUIPMENT.

Tenders & toys



2 x Tenders



1 x Deck jacuzzi



Anti-jellyfish pool



Trampoline



RYA training centre for jetskis & waverunners



2 x Waverunners



1 x Stand up jetski



2 x SeaBobs



1 x Jetsurf



2 x eFoilS



2 x Subwings



2 x Kayaks



4 x Stand up paddleboards



Wakeboard



Waterskis



Inflatable tows



Scuba diving equipment



Snorkelling gear

Fitness & wellness



Cross trainer



Exercise balls



Free weights



Jump ropes



Multi gym



Training bench



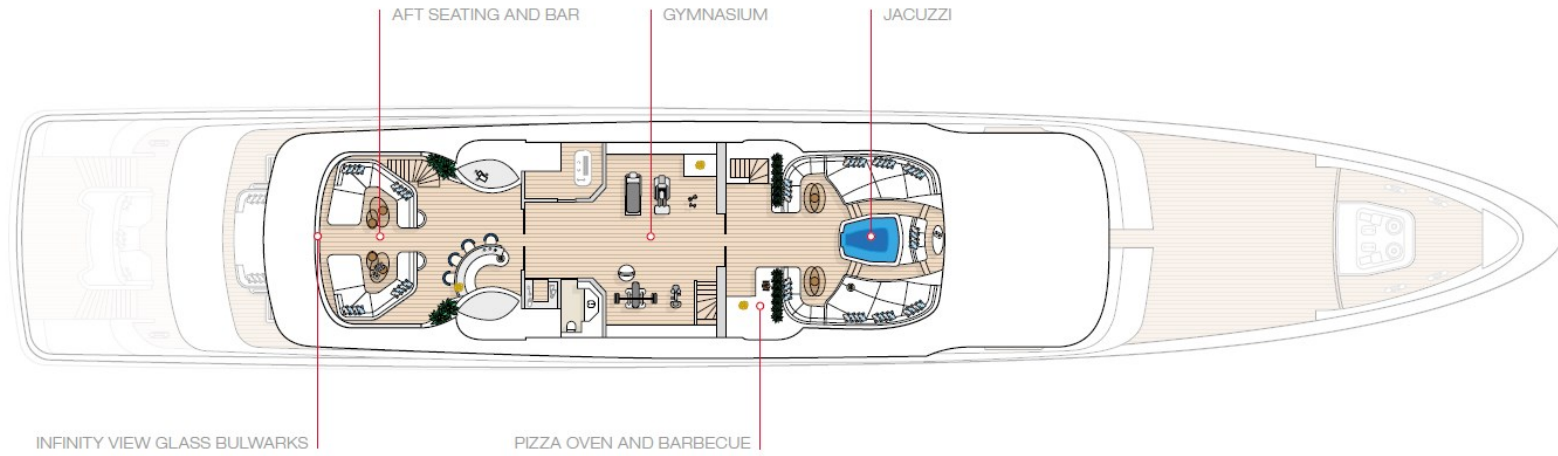
Treadmill



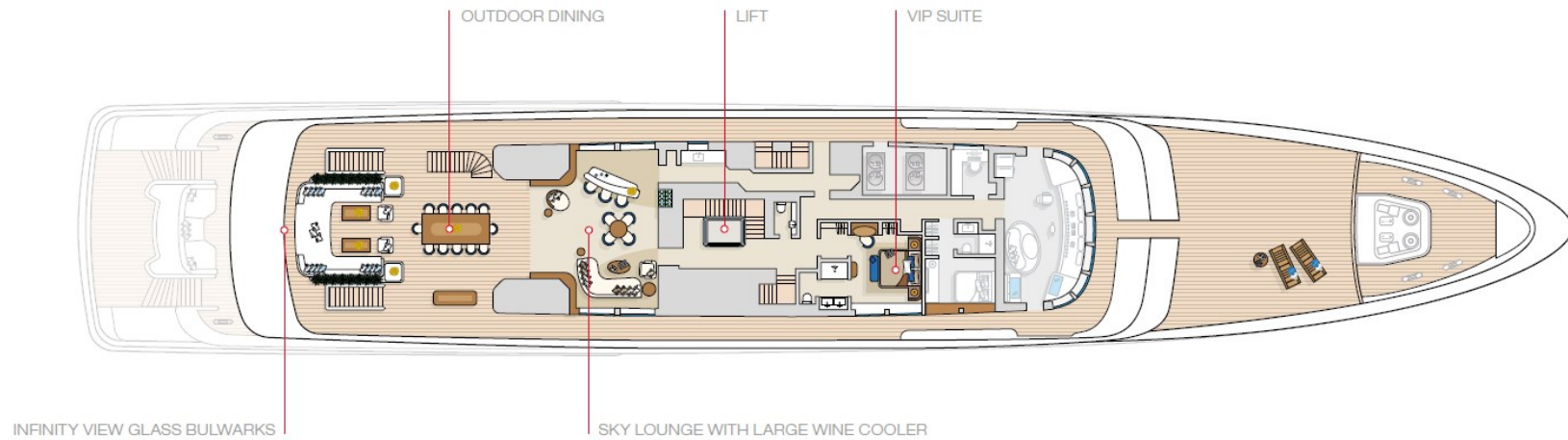
Yoga mats



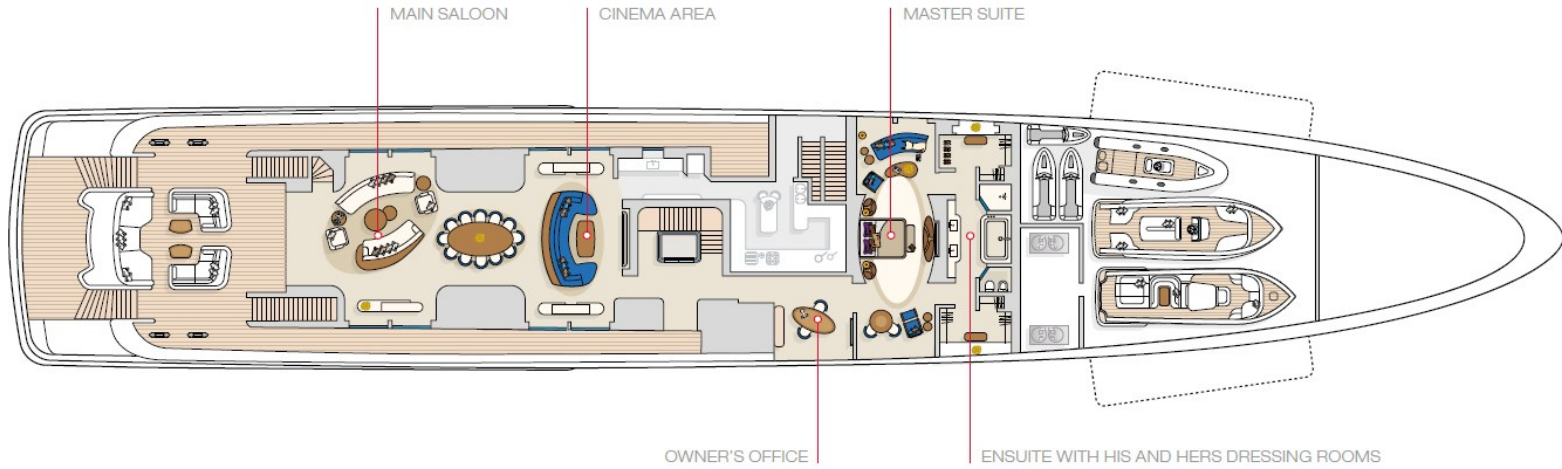
Sun Deck



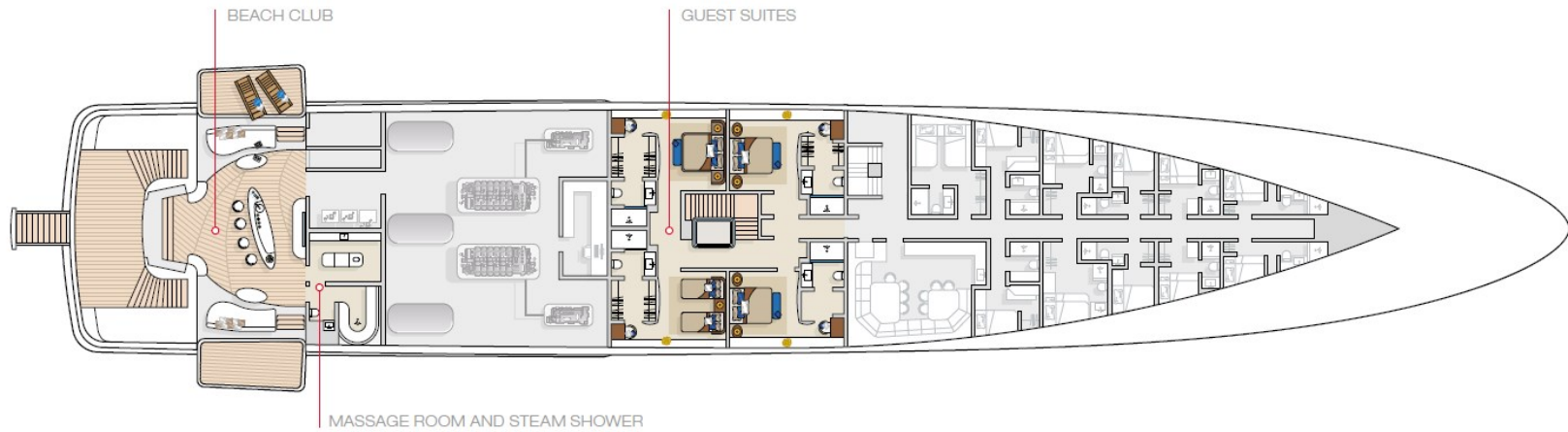
Bridge Deck



Main Deck



Lower Deck



BURGESS

WORLD CLASS.
WORLD WIDE.

London +44 20 7766 4300	Monaco +377 97 97 81 21	New York +1 212 223 0410	Miami +1 305 672 0150	Singapore +65 9665 8990	Beverly Hills +1 310 424 5112	Palma +34 971 495 413	Athens +30 210 967 1661
Dubai +971 4 425 5874	Phuket +66 7623 9739	Hong Kong +852 6496 2094	Tokyo +81 46 738 8612	Sydney +61 499 945 557	Mumbai +91 98211 67253	Shanghai +86 187 0898 6800	

Advertising of these vessel(s) in printed publications, on the internet or in any other medium is not permitted without prior written permission from Burgess. All particulars are given in good faith and are believed correct but they cannot be guaranteed.

Last updated: 29 April 2024