

ARCTIC



OVERVIEW.

Stand by for serious adventure. An ocean salvage tug converted into a unique expedition yacht, the 88-metre (289ft) ARCTIC is exceptionally capable and impressively equipped. Not just for high-latitude exploration as her name suggests – she broke the Guinness World Record for venturing closer to the South Pole than any other vessel has ever been – but also for cruising the tropics and everywhere in between.

Designed to take up to 12 charter guests on the ultimate voyage, her supremely comfortable guest accommodation is arranged over four different levels – all of which are on the main deck or above. The level of service you'd expect to find in a high-end luxury resort is absolutely assured with a crew of 28 and a huge investment in state-of-the-art satellite communication systems ensures that wherever in the world you decide to cruise, you can have excellent Internet connectivity on board at all times.

She has two separate sundecks, one atop her main superstructure and another one aft that also serves as a helipad. Most large yachts have a beach club; ARCTIC goes one better with a beach house, which contains a heated pool for relaxation or scuba dive training. The facilities on board include a dedicated cinema fitted with sensory chairs, a fully equipped gym, a disco and a barbecue area. When you want a dip in the sea, the bathing platform in her stern gives easy, safe and instant access in and out of the water.

All of her seven cabins are remarkably spacious. The impressive master suite has a huge bed, a private lounge, a large separate office and his-and-hers bathrooms, both of which have walk-in wardrobes. On the upper deck are two twin-bed cabins and one double. The main deck has three very large double cabins including a VIP suite with a study desk and two sofas in its separate living room.

She carries an armada of small craft and toys. The inventory includes eight different boats, so there's an ideal one for every possible function: two ultra-fast 12-metre (42ft) tenders to ferry you from ship to shore, a beautiful classic speedboat, a sport fishing boat, a dive boat, a specialist waterski and wakeboarding boat, an expedition RIB and several crew tenders. There's also a fleet of nine jet skis plus SeaBobs, diving and snorkelling sets and plenty of fishing gear.

With an incredible cruising range of 17,000 miles, whatever adventure you have in mind ARCTIC can take you there.

Key features

Jacuzzi and pool on main deck

A fully equipped gym

PADI Dive instructor on board

Zero speed stabilisers to reduce any rolling motion while at anchor

Flexible cabin configurations

ARCTIC

At anchor



At anchor



At anchor



Sun deck



BURGESS

Discover the difference.
burgessyachts.com



ARCTIC

Sun deck



Lounge deck



Lounge deck



Bridge deck aft



ARCTIC

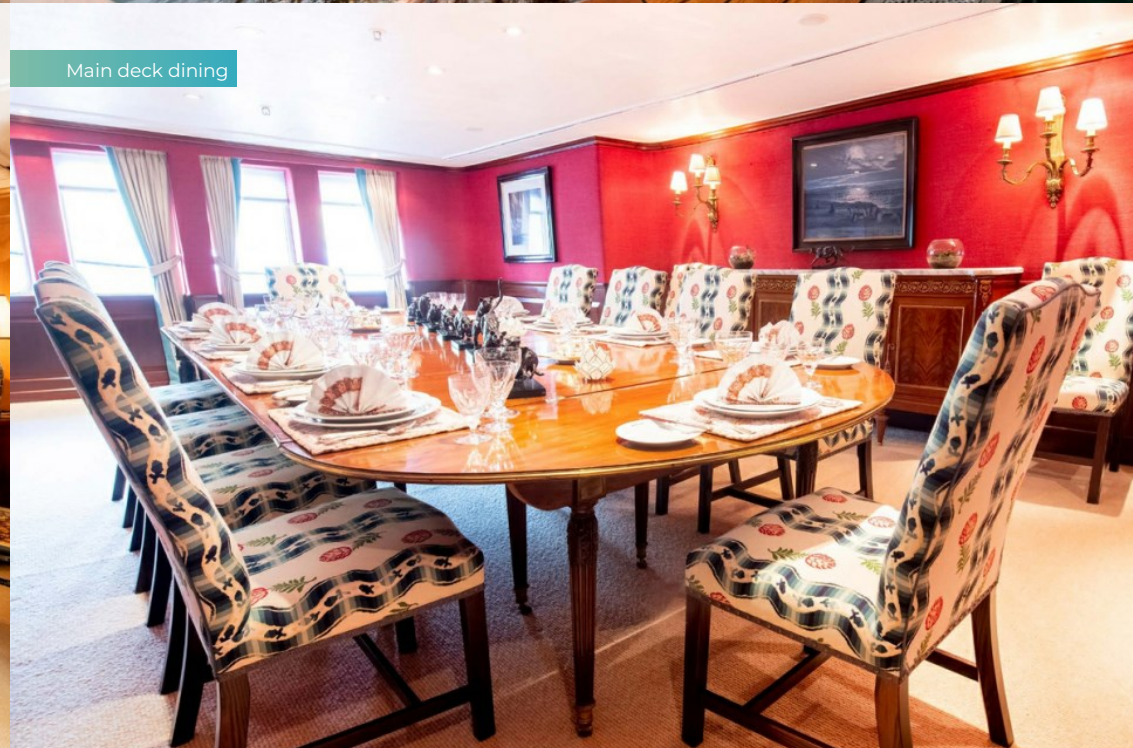
Main deck aft



Main deck lounge



Main deck dining



ARCTIC

Upper lounge and library



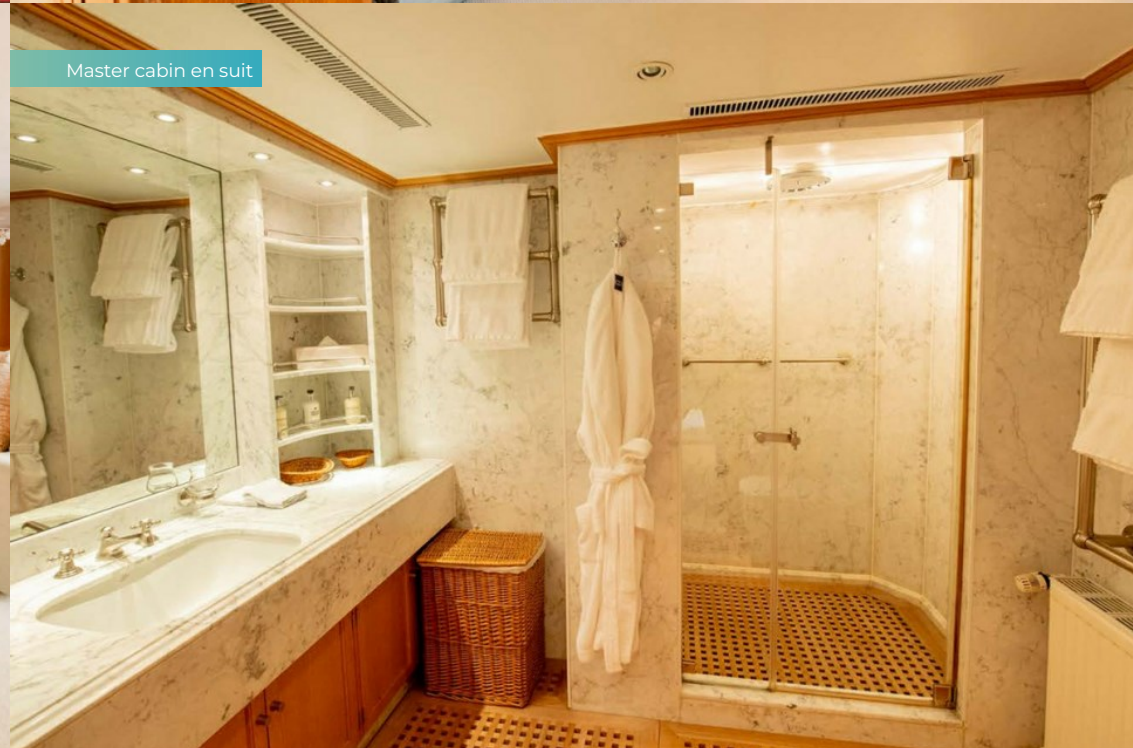
Master cabin



Master cabin



Master cabin en suit



ARCTIC

Twin cabin - Upper deck



Double cabin - Lower deck



Lifestyle



Lifestyle



ARCTIC

Tender



BURGESS

Discover the difference.
burgessyachts.com



ARCTIC

SPECIFICATION.



Length
87.6m (287.3ft)



Built
1969 (refitted 2020), Schichau-Unterwasser, Germany



Interior designer
Pauline Nunn



Beam
14.3m (46.9ft)



Draft
7.3m (23.9ft)



Gross tonnage
2,610



Cruising speed
12 knots



Maximum speed
18 knots



Fuel consumption at cruising speed
820 litres per hour



Guests
12



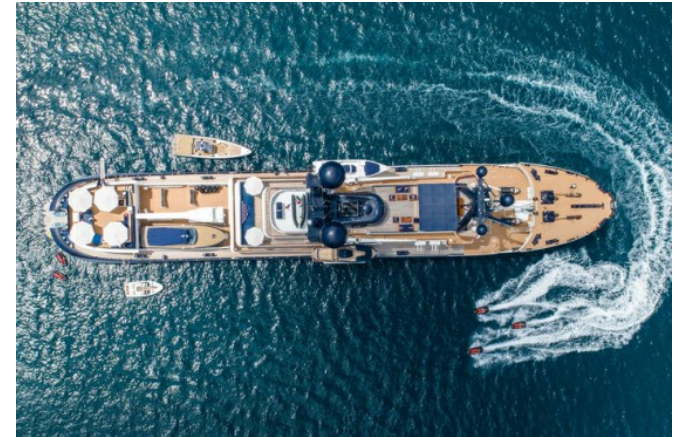
No. of guest cabins
7 (5 × double, 2 × twin, 1 × additional berth)



Crew
28

[View yacht on website](#)

[Watch yacht video](#)



BURGESS

Discover the difference.
burgessyachts.com



ARCTIC

TENDERS & TOYS



9 × Tenders



1 × Deck jacuzzi



Pool



7 × Waverunners



4 × SeaBobs



1 × eFoil



2 × Kayaks



4 × Stand up paddleboards



Pedal board



Windsurfer



Surfboard



Wakeboard



Waterskis



Inflatable tows



Scuba diving equipment

ARCTIC

FITNESS & WELLNESS



Cross trainer



Exercise balls



Free weights



Multi gym



Training bench



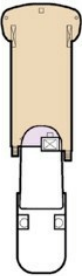
Treadmill



Yoga mats



MONKEY ISLAND



BRIDGE DECK



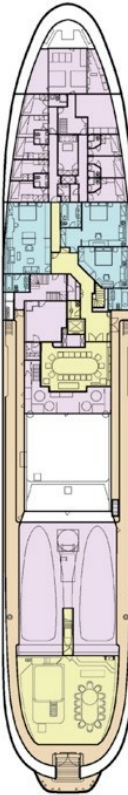
FORECASTLE DECK



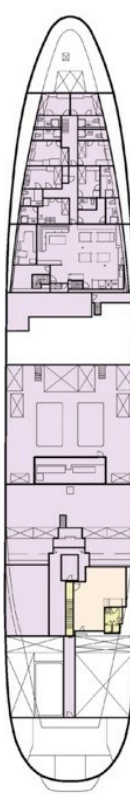
UPPER DECK



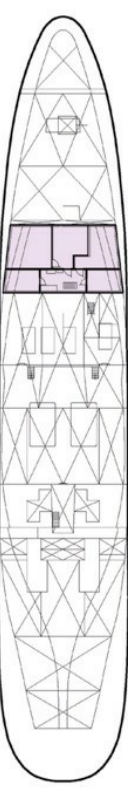
MAIN DECK



LOWER DECK



TANK DECK



KEY

- Deck
- Guest Areas
- Master Cabin
- Guest Cabins
- Sun Deck
- Crew Areas
- Fitness & Wellbeing

BURGESS

WORLD CLASS. WORLD WIDE.

London +44 20 7766 4300	Monaco +377 97 97 81 21	New York +1 212 223 0410	Miami +1 305 672 0150	Singapore +65 9665 8990	Beverly Hills +1 310 424 5112	Palma +34 971 495 413	Athens +30 210 967 1661
Dubai +971 4 425 5874	Phuket +66 7623 9739	Hong Kong +852 6496 2094	Tokyo +81 46 738 8612	Sydney +61 499 945 557	Mumbai +91 98211 67253	Shanghai +86 187 0898 6800	Rio de Janeiro +55 21 2553-3238
Aspen +1 970 710 2294							

Advertising of these vessel(s) in printed publications, on the internet or in any other medium is not permitted without prior written permission from Burgess. All particulars are given in good faith and are believed correct but they cannot be guaranteed.

Last updated: 03 March 2025