

APOGEE



APOGEE

SPÉCIFICATIONS.



Prix demandé
USD 24 950 000



Chantier
2003 (refitted 2019), Codecasa, Italy



Longueur
62,5m



Largeur
11,2m



Tirant d'eau
3,8m



Tonnage brut
1 126



Vitesse de croisière
11 knots



Vitesse maximale
16 knots



Autonomie
7 000 nm



Pavillon
Cayman Islands



Position
West Mediterranean



Classe
Lloyd's



Designer extérieur
Codecasa



Designer d'intérieur
Della Role Design



Construction
Hull - Steel, Superstructure - Aluminium, Deck - Teak



Équipage
17



Invités
14



Cabines
6 (4 × double, 2 × twin, 2 × additional berths)



Moteurs
2 × 2 260hp Caterpillar



Propulsion
Twin screw diesel yacht

Note

Not available for sale to US residents while in US waters.

[Voir le yacht sur le site](#)

[Regarder la vidéo du yacht](#)



APOGEE

Sky lounge



Main deck lounge



Main deck lounge



Main deck dining room



BURGESS

Discover the difference.
burgessyachts.com



APOGEE

Main deck master cabin



Double cabin



BURGESS

Discover the difference.
burgessyachts.com



APOGEE



Upper deck double cabin



Master bathroom office



APERÇU.

The 62.5m (205ft) motor yacht APOGEE, built to Lloyd's classification and commercially registered, was delivered by Italian yard Codecasa in 2003 with interiors by Della Role Design and exteriors by the yard's in-house team. An elevator serves all guest decks, making her wheelchair friendly.

APOGEE is fully equipped to entertain, especially when it comes to unwinding al fresco. She has a very large jacuzzi for 12 people on the forward sun deck, a fully equipped, climate controlled gym with excellent views and a bar and sun lounge aft along with a huge amount of versatile deck space for exercise, relaxation or entertainment.

The bridge deck has open air dining aft with buffet bar and corner sun lounges and forward is a circular Portuguese bridge, presenting another option for cocktails, informal dining and privacy while in port. On the main deck aft is a sit up bar and two lounge areas and steps lead down to the tender garage. She has a 7m (23ft) Novurania limo tender and a 5.8m (19ft) Novurania jet tender and a large selection of watertoys stowed in the tender garage and on the foredeck.

Her interiors are classically styled with extensive use of wood panelling creating a warm, welcoming interior. Her convivial sky lounge has a huge and fully equipped sit up bar to port with a lounge area and green baize gaming table to starboard. The main saloon has a C-shaped forward facing lounge area and forward of a partition is an opulent formal dining area.

She sleeps 14 guests in seven cabins. There is a full beam owner's suite forward on the main deck with his and hers bathroom including bath, two walk in wardrobes and a private office. An adjacent single cabin is suitable for staff or young children. To port on the bridge deck is a VIP suite and on the lower deck there are two double cabins, one convertible cabin and a twin cabin.

Twin 2,260hp Caterpillar diesel engines give her a top speed of 16 knots and an impressive transatlantic range of 7,000nm at 11.5 knots. Zero speed stabilisers ensure comfort at anchor.

Principales caractéristiques

Can accommodate 12 guests in 7 cabins (5 double, 2 twin, full width master)

Accommodates 17 Crew (4 pullman, 4 king, 4 single, 1 convertible)

All staterooms are en suite and all bathroom fixtures are gold or gold-plated

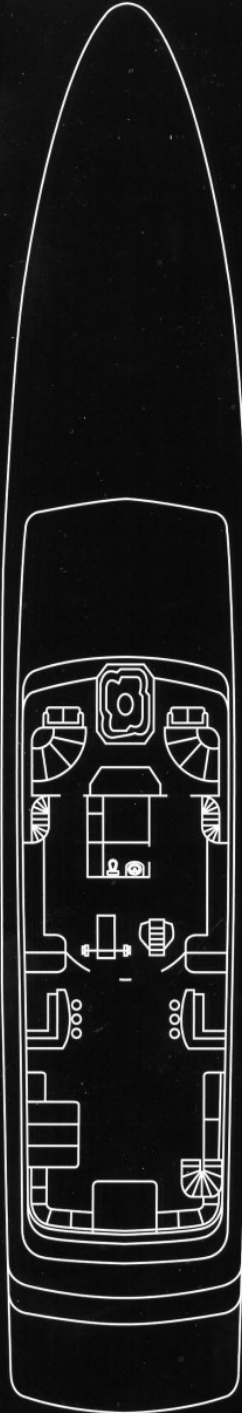
Equipped with Deck Jacuzzi, Elevator, Stabilisers at anchor (zero speed) and underway

Air-conditioned gym located on the sundeck with panoramic views

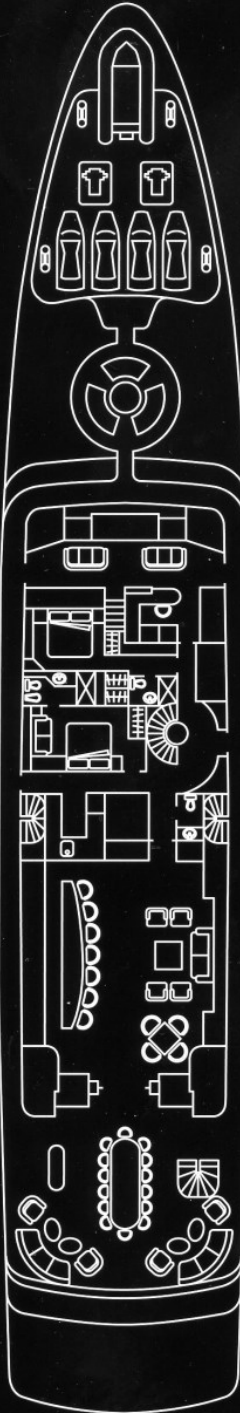
Lloyds Classification, Commercial registration

Annexes

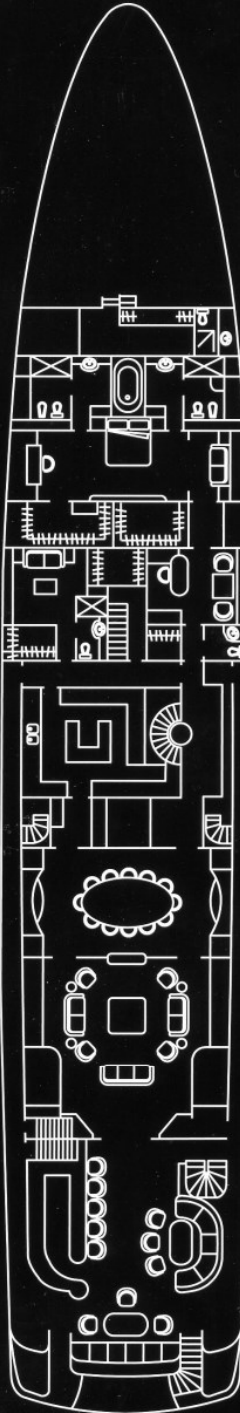
23 ft/7 m Novurania / hard top "limo" / 220 hp (2011) 19 ft/5.79 m Novurania Jet / 260 hp (2011) 4 x 3-person Yamaha VX Cruiser waverunners (2012), 2 x 2-person inflatable kayaks, water skis, wakeboard, towable toys, snorkel, fishing equipment, etc. 4 x 5000 Series Bladefish /underwater propulsion (2012). Bladefish goes to depth of 130ft/40m



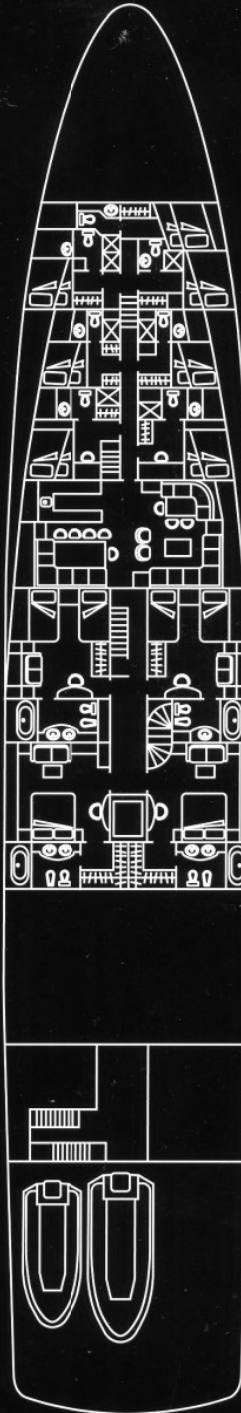
Sun Deck



Bridge Deck



Main Deck



Lower Deck

BURGESS

WORLD CLASS. WORLD WIDE.

London	Monaco	New York	Miami	Singapore	Beverly Hills	Palma	Athens
+44 20 7766 4300	+377 97 97 81 21	+1 212 223 0410	+1 305 672 0150	+65 9665 8990	+1 310 424 5112	+34 971 495 413	+30 210 967 1661
Dubai	Phuket	Hong Kong	Tokyo	Sydney	Mumbai	Shanghai	
+971 4 425 5874	+66 7623 9739	+852 6496 2094	+81 46 738 8612	+61 499 945 557	+91 98211 67253	+86 187 0898 6800	

La publicité de ce(s) navire(s) dans des publications imprimées, sur Internet ou sur tout autre support n'est pas autorisée sans l'autorisation écrite préalable de Burgess.
Toutes les informations sont données de bonne foi et sont considérées comme exactes, mais elles ne peuvent être garanties.

Dernière mise à jour : 01 mai 2024