

# ANYA





ANYA

# SPECIFICATION.



Asking price  
**EUR 11,995,000**



Built  
**2015 (refitted 2020), Sunseeker, United Kingdom**



Length  
**40m (131.4ft)**



Beam  
**8.1m (26.6ft)**



Draft  
**2.7m (8.9ft)**



Gross tonnage  
**341**



Cruising speed  
**15 knots**



Maximum speed  
**22 knots**



Flag  
**Malta**



Lying  
**West Mediterranean**



Class  
**RINA**



Exterior designer  
**Sunseeker**



Interior designer  
**Sunseeker**



Construction  
**Hull - GRP, Superstructure - GRP**



Crew  
**8**



Guests  
**12**



Cabins  
**5 (3 × double, 2 × double/twin, 2 × additional berths)**



Engines  
**2 × 3,180hp MTU**

[View yacht on website](#)

[Watch yacht video](#)





ANYA



BURGESS

Discover the difference.  
[burgessyachts.com](http://burgessyachts.com)





ANYA



BURGESS

Discover the difference.  
[burgessyachts.com](http://burgessyachts.com)





ANYA

Master cabin - Main deck



Master cabin en suit



BURGESS

Discover the difference.  
burgessyachts.com





ANYA



Main deck aft

BURGESS

Discover the difference.  
[burgessyachts.com](http://burgessyachts.com)





ANYA



BURGESS

Discover the difference.  
burgessyachts.com





ANYA



BURGESS

Discover the difference.  
[burgessyachts.com](http://burgessyachts.com)





ANYA



BURGESS

Discover the difference.  
[burgessyachts.com](http://burgessyachts.com)





ANYA

# OVERVIEW.

The 40m (131.4ft) ANYA is one of the much-heralded semi-displacement Sunseeker 40m series. This 341GT yacht was built in composite to RINA classification and MCA compliance, styled by the UK-based shipyard, delivered in 2015 and last refitted in 2020-21 during her class survey. ANYA has been unstintingly maintained and presents in excellent condition.

An expansive sun deck has a jacuzzi forward flanked by sun pads, a marble-topped sit-up wet bar with sink and BBQ and lounge seating beneath the hardtop and a versatile space aft currently used for sun lounging.

Steps to starboard lead down to the upper deck aft where there is open-air dining shaded by the overhang and a sun lounge with two L-shaped corner sofas aft.

More steps lead to the spacious main deck aft, which has a sun lounge aft with banquettes and club seats around a coffee table. Steps aft lead down to a large hydraulic swim platform that can be lowered into the sea for swim-on boarding. Inside the transom door is stowage for the yacht's Williams DieselJet 565 tender and toys.

From the main deck aft the starboard sidedeck leads to steps up to a foredeck sun lounge with a large daybed. Forward of that is the mooring area.

From the main deck aft, floor-to-ceiling glass doors slide back to reveal the main saloon. Sofas and armchairs are arranged around a circular coffee table and full-height sliding glass doors either side lead out to fold-down balconies. Forward is a formal dining area.

In the sky lounge there is an L-shaped sofa and two armchairs, a corner office and a fully equipped bar. On the forward bulkhead there is a large TV, which turns the space into a cinema room.

ANYA welcomes up to 12 guests in five cabins. The owner's suite is full beam and forward on the main deck. Forward is an en suite with bath and shower room, three walk-in wardrobes and a large, four-panelled picture window to starboard.

The lower deck is home to two double cabins and two convertible cabins, each of which has an additional berth. All lower deck cabins are en suite with shower rooms.

Twin 3,180hp MTU diesel engines give her a top speed of 22 knots, a cruising speed of 15 knots and a range of 1,500nm at her passage speed of 11 knots. Zero speed and underway stabilisers ensure guest comfort at all times.

## Key features

---

**Twin MTUs give a top speed of 22 knots and cruising at 15 knots**

---

**Up to 12 guests in five spacious cabins, with a full-beam main deck master**

---

**Contemporary, chic and welcoming interiors across three decks**

---

**Huge sun deck with jacuzzi, foredeck sun lounge, open-air dining, spacious main deck aft**

---

**Expansive hydraulic swim platform**

---

**Zero speed stabilisers**

---

**Excellent charter record**

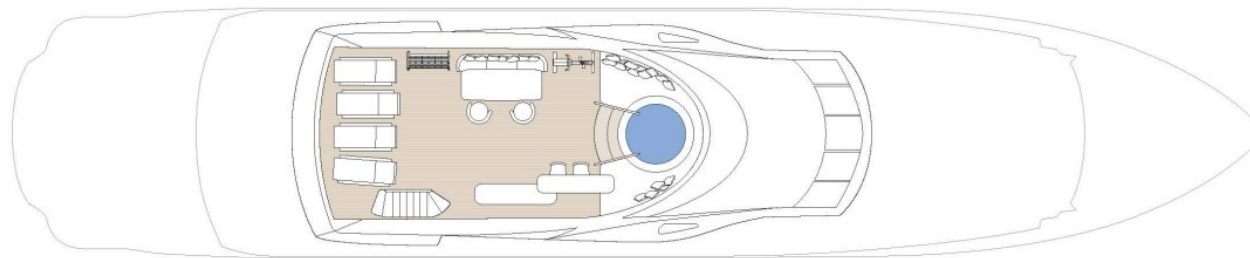
---

## Tenders

---

5.65m Williams tender

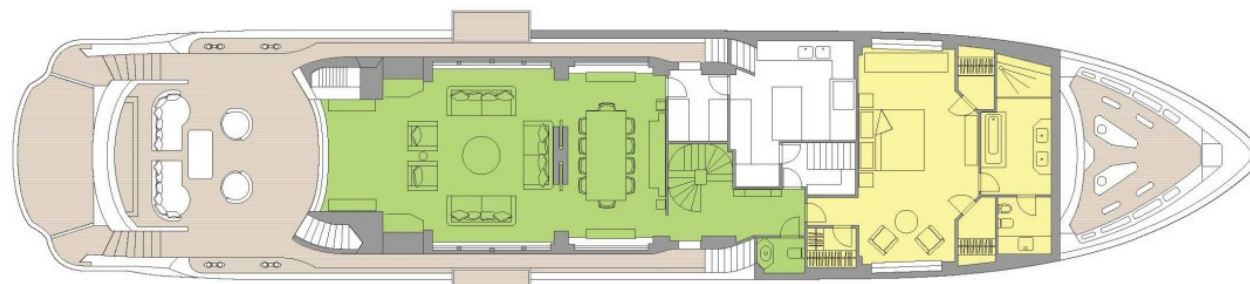




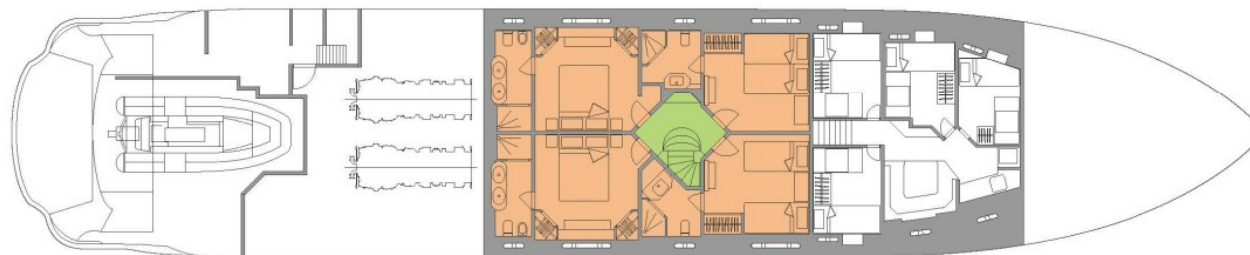
SUN DECK



UPPER DECK



MAIN DECK



LOWER DECK

■ GUEST AREAS
 ■ MASTER SUITE
 ■ GUEST CABINS
 ■ JACUZZI



# BURGESS

# WORLD CLASS. WORLD WIDE.

|                            |                            |                             |                          |                            |                                  |                                  |                            |
|----------------------------|----------------------------|-----------------------------|--------------------------|----------------------------|----------------------------------|----------------------------------|----------------------------|
| London<br>+44 20 7766 4300 | Monaco<br>+377 97 97 81 21 | New York<br>+1 212 223 0410 | Miami<br>+1 305 672 0150 | Singapore<br>+65 9665 8990 | Beverly Hills<br>+1 310 424 5112 | Palma<br>+34 971 495 413         | Athens<br>+30 210 967 1661 |
| Dubai<br>+971 4 425 5874   | Phuket<br>+66 7623 9739    | Hong Kong<br>+852 6496 2094 | Tokyo<br>+81 46 738 8612 | Sydney<br>+61 499 945 557  | Mumbai<br>+91 98211 67253        | Shanghai<br>+86 187 0898<br>6800 |                            |

Advertising of these vessel(s) in printed publications, on the internet or in any other medium is not permitted without prior written permission from Burgess. All particulars are given in good faith and are believed correct but they cannot be guaranteed.

Last updated: 25 April 2024