

ANDREA



ANDREA

OVERVIEW.

A spectacular and powerful combination of engineering expertise and ground-breaking design, ANDREA is a close collaboration between CRN shipyard, Zuccon International Project and Winch Design. Commissioned by an experienced superyacht owner, the vessel was delivered in April 2017.

Winch Design was appointed to create the exterior guest areas, livery, interior decoration and owner's supply, resulting in excess of over 1,000sq metres of design elements being created across all decks. The design vision of ANDREA demonstrates an optimised balance between interior and exterior spaces, with impressive volume and a free flowing layout for a relaxed indoor-outdoor living environment.

ANDREA boasts a stunning beach club, complete with espresso bar, that is dappled with natural light through the pool above. The contents of a huge toy locker range from waverunners, SeaBobs and all manner of tows, to sailing dinghies, flyboards, wingfoils and an inflatable aquapark including a 13m sun-deck-to-sea slide.

The huge swim platform is even big enough for sea level dining, which gives you a second open-air option to the sun deck dining table, which is next to the Teppanyaki bar for that special chef's table experience.

For landmark occasions, there's an enchanting circular formal dining room with retractable glass doors seamlessly merging indoor and outdoor spaces. Once dinner has finished, the foredeck is equipped with a DJ station featuring nightclub lighting and sound systems.

ANDREA prioritizes wellness with a fully equipped upper deck gym and a main deck beauty salon and massage suite, complete with a fold-down balcony for indulgent sea-side treatments. Designed for inclusivity, ANDREA offers wheelchair-friendly accessibility, with an elevator servicing lower to owner's decks and step-free access throughout, ensuring a memorable experience for all guests.

Enquire today to experience the brilliance of ANDREA first hand.

Key features

Private deck forward of the master suite

VIP cabin with opening doors for fresh air

Spa featuring hair salon with fold-out balcony

Fully-equipped gym

Beach club with espresso bar

Elevator from lower level to owner's deck

Main deck pool with spa jets & jacuzzi on sun deck

Indoor & outdoor cinemas

ANDREA

Bridge deck forward



Entertaining on the forward deck



Forward deck



Main deck pool



BURGESS

Discover the difference.
burgessyachts.com



ANDREA

Main deck lounge



Main deck lounge



Sky lounge dining



Upper aft deck



ANDREA

Owner's deck aft with cinema display



Owner's deck master cabin



Owner's deck master cabin



Master bathroom en suite



ANDREA

Bridge deck VIP cabin



VIP bathroom en suite



Twin cabin



Double cabin



ANDREA

Sun deck dining



Sun deck jacuzzi



Sun deck bar



Sky lounge



ANDREA

Beach club



Beauty salon



Beauty salon with fold-down balcony



Gym



BURGESS

Discover the difference.
burgessyachts.com



ANDREA

Lounging on the swim platform



Lifestyle



Impressive selection of watertoys



Beach set up



BURGESS

Discover the difference.
burgessyachts.com



ANDREA

Beach set up



Watersports



At anchor



Watersports



BURGESS

Discover the difference.
burgessyachts.com



ANDREA

SPECIFICATION.



Length
74m (242.7ft)



Built
2017, CRN Ancona, Italy



Interior designer
Winch Design



Beam
13.5m (44.3ft)



Draft
4m (13.1ft)



Gross tonnage
2,218



Cruising speed
13 knots



Maximum speed
16 knots



Fuel consumption at cruising speed
600 litres per hour



Engines
2 x 2,682hp Caterpillar



Guests
12



No. of guest cabins
8 (6 x double, 2 x double/twin)



Crew
22

Note

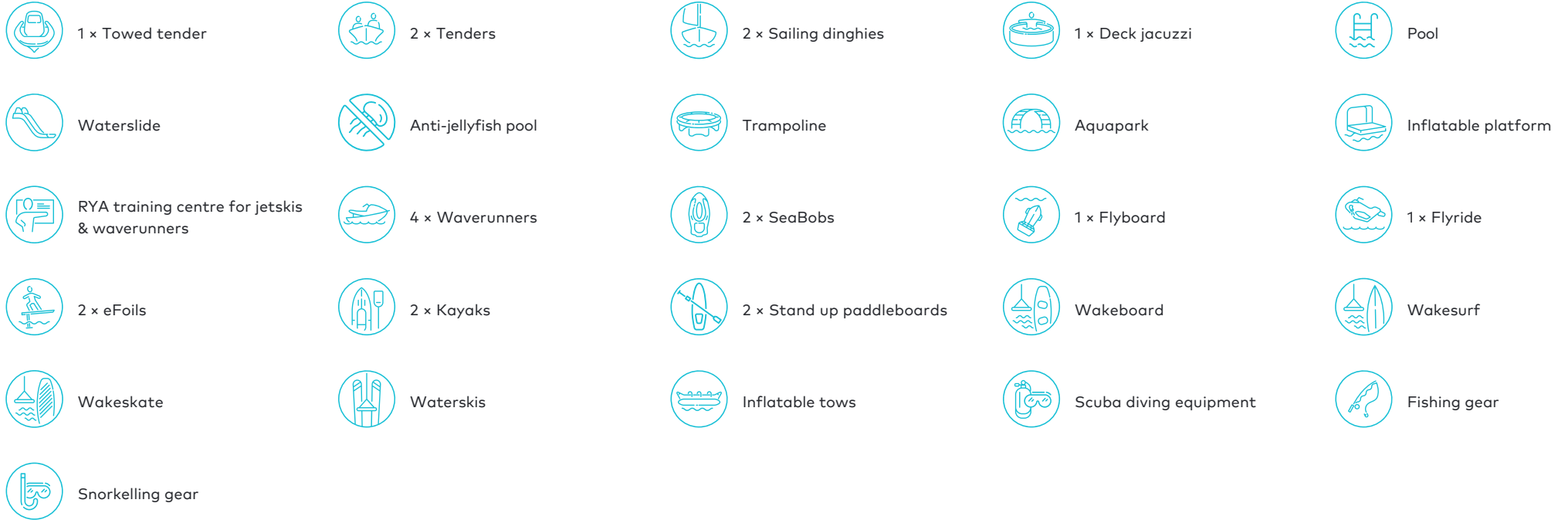
Not available for charter to US residents while in US waters. Registered under the Yacht Engaged in Trade scheme (YET). All Mediterranean charters must start in either the South of France, Monaco or Corsica. For all charters, the principal charterer must be a non-EU resident.

[View yacht on website](#)

[Watch yacht video](#)

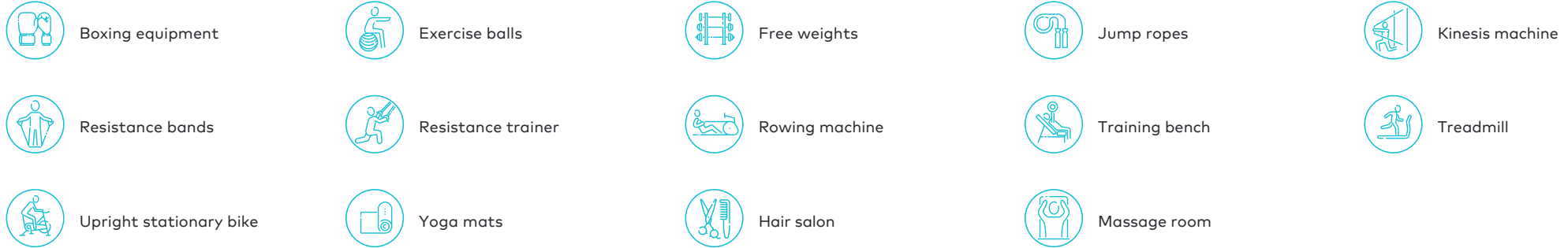


Tenders & toys



11.5m (38ft) Super Sport Crossover chase boat with 2 x 600hp Mercury outboard engines | 9.05m (29.7ft) T9 TechnoHull custom build tender with 2 x 225hp engines, 6.10m (20ft) | Novurania Cat 20 tender with Yamaha 115hp outboard engine and opening bow ramp | 2 x mini Catamaran Guppy | 3 x SeaDoo GTX Limited 300 jet skis (2020 model) | 1 x SeaDoo GTX 230 (for Fly Boots jet pack pro) | 1 x X-Jetpack Flyboard Pro series and jet pack | 2 x SeaBob F5 | 1 x Awake Ravic S E-surf | 1 x Fliteboard Pro | 1 x Fliteboard | 2 x inflatable kayaks | 2 x Jobe stand up paddleboards | 1 x Jobe Exceed wake skate | 1 x Jobe Exus wakesurf | 2 x Jobe water skis | 1 x Jobe single ski | 1 x Jobe Elite wake combo | 1 x Jobe Maddox wakeboard | 1 x Jobe Vanity wakeboard | 1 x Aquaglide Thunderdome | 1 x Aquaglide trampoline | 1 x Aquaglide Velocity slide | 1 x Aquaglide Rockit | 1 x Aquaglide Blockade | 8 x SCUBA diving equipment | Snorkelling equipment | Assorted fishing equipment | Assorted towables | Anti-jellyfish sea pool | Inflatable stern set up | Floating dock including jet ski & SeaBob docks | 1 x the "big" slide (19m, from the sun deck to the sea) | Approved RYA training centre for guests' use of personal watercraft

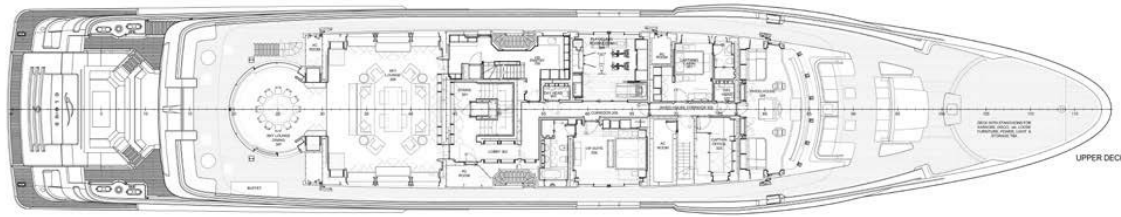
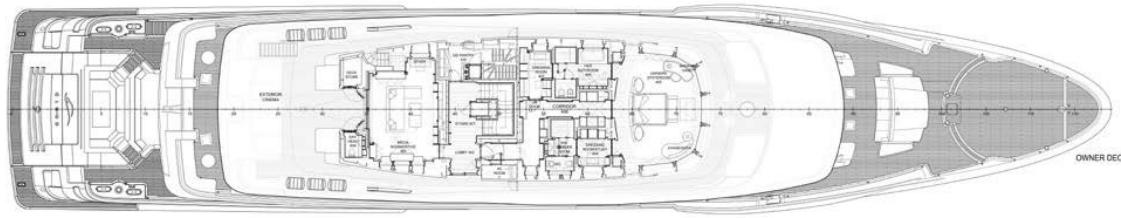
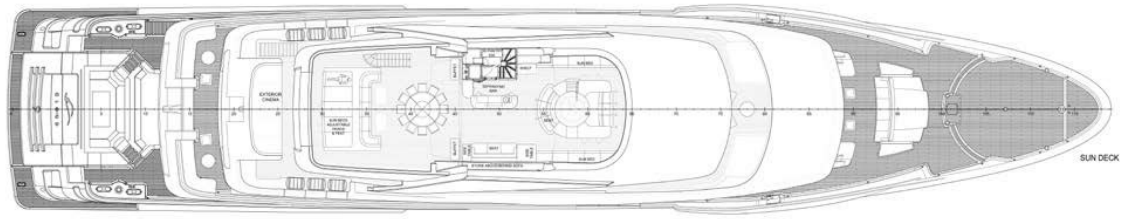
Fitness & wellness

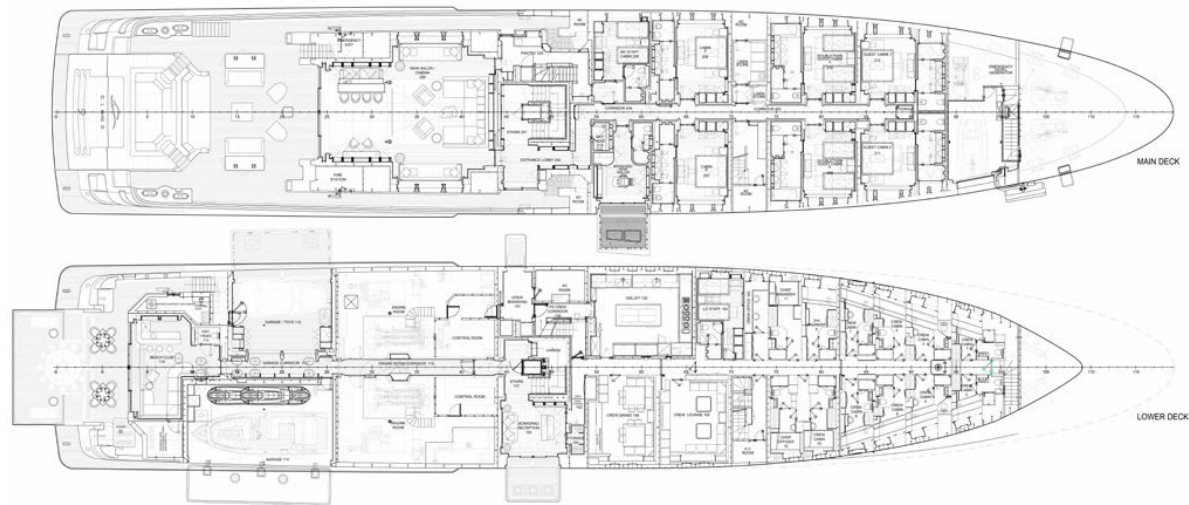


1 x Concept 2 rowing machine | 1 x Peloton bike | 1 x Mira Fit workout bench | 1 x Woodway 4Run treadmill (2m between track and ceiling) | 1 x Kinesis Vision | 1 x step board, Boxing gloves & pads | TRX exercise mats | Resistance bands | Soft balls | Skipping rope | Exercise bands | Exercise balls (small, medium and large) | Yoga blocks | Technogym free weights (dumbbells - up to 20kg) | Medicine balls (2kg, 4kg, 6kg, 8kg, 10kg)

Communication & entertainment

Satellite television (Sky Italia or Sky UK dependent on the location) | Outdoor cinema (Panasonic PT-DZ13KE+ Stewart Screen) | Indoor cinema (Sony VPLVW520 + Stewart Screen) | Netflix, Amazon Prime | Playstation | Airplay throughout interior and exterior areas | Kaleidescape movie system | Karaoke | DJ equipment (disco/DJ set can be set up on the foredeck | Aft deck | Owner deck aft | Sun deck and beach club) | Board games for adults & children, Satcom VSat: Sailor 900 4G: Pepwave GSM cards, wi-fi internet access (max download/upload speed MIR 6144/MIR 2048), committed speed CIR 1024/1024





BURGESS

WORLD CLASS. WORLD WIDE.

London +44 20 7766 4300	Monaco +377 97 97 81 21	New York +1 212 223 0410	Miami +1 305 672 0150	Singapore +65 9665 8990	Beverly Hills +1 310 424 5112	Palma +34 971 495 413	Athens +30 210 967 1661
	Dubai +971 4 425 5874	Phuket +66 7623 9739	Hong Kong +852 6496 2094	Tokyo +81 46 738 8612	Sydney +61 499 945 557	Mumbai +91 98211 67253	

Advertising of these vessel(s) in printed publications, on the internet or in any other medium is not permitted without prior written permission from Burgess. All particulars are given in good faith and are believed correct but they cannot be guaranteed.

Last updated: 02 April 2024