

AMICA MEA



OVERVIEW.

A yacht for connoisseurs, the 46-metre (152ft) AMICA MEA offers high-end luxury with a touch of class. Built by the boutique Hakvoort shipyard (highly esteemed by those in the know) and still fresh from a major refit two years ago, she combines the crisp, elegant lines of an iconic modern-classic yacht with touches of traditional yachting glamour and innovative contemporary design.

Designed for up to 11 guests in five beautifully crafted cabins, her special features include an excellent range of watersports, a skylounge movie theatre, a massage and gym room, powerful stabilisers at sea and at anchor, and a stunning contemporary interior.

The spacious sundeck is a great outdoor social hub with dining, sitting, lounging and sunbathing zones in sun and shade plus a bar and jacuzzi, so everyone can find a perfect place to relax.

The upper aft deck is the main open-air dining zone on board. It's elegant and uncluttered with panoramic views from the big teak table and ample space to invite a couple of extra guests on board for a sociable dinner party.

The main deck saloon has gorgeous flowing curves, a marble floor, iconic modern art, huge windows and a high-gloss hardwood finish. There's a sleek bar, a chic and comfortable lounge, and an impressive dining area.

Only level up, the bright and chic skylounge has two large, curved sofas, a games table, a marble-topped cocktail bar and importantly, plenty of space. It's ideal for movies as well as parties and games – a large projector screen drops down from the ceiling at the touch of a button.

All the way forward on the main deck you'll find an exceptional master suite. The main cabin is spacious and soothing with subtle mood lighting and an amazing quality of finish. There's plenty of natural light and great sea views from three big oval windows on each side. You'll have study and lounge areas for your private use. Double doors lead into the spectacular marble bathroom, which has a walk-in dressing room and an enormous bathtub as well as a large, separate shower.

In the other four guest cabins, amidships on the lower deck, your guests will enjoy a high level of luxury with a similar design aesthetic. Each cabin has good sea views through a couple of windows, a marble en suite bathroom and an ample amount of living space.

Key features

Recently refitted

Spa facilities: Massage room

Exercise equipment

Shaded deck dining & deck areas

Jacuzzi on the sun deck

Zero speed stabilisers to reduce any rolling motion while at anchor

Flexible cabin configurations

AMICA MEA

At anchor



Sun deck jacuzzi



Sun deck



Bridge deck aft dining



AMICA MEA

Bridge deck aft



Main deck aft



Swim platform



Main deck lounge



AMICA MEA

Main deck bar



Main deck dining area



Main deck dining area



Sky lounge



AMICA MEA

Master cabin - Main deck



Master cabin - Main deck



Master cabin en suite

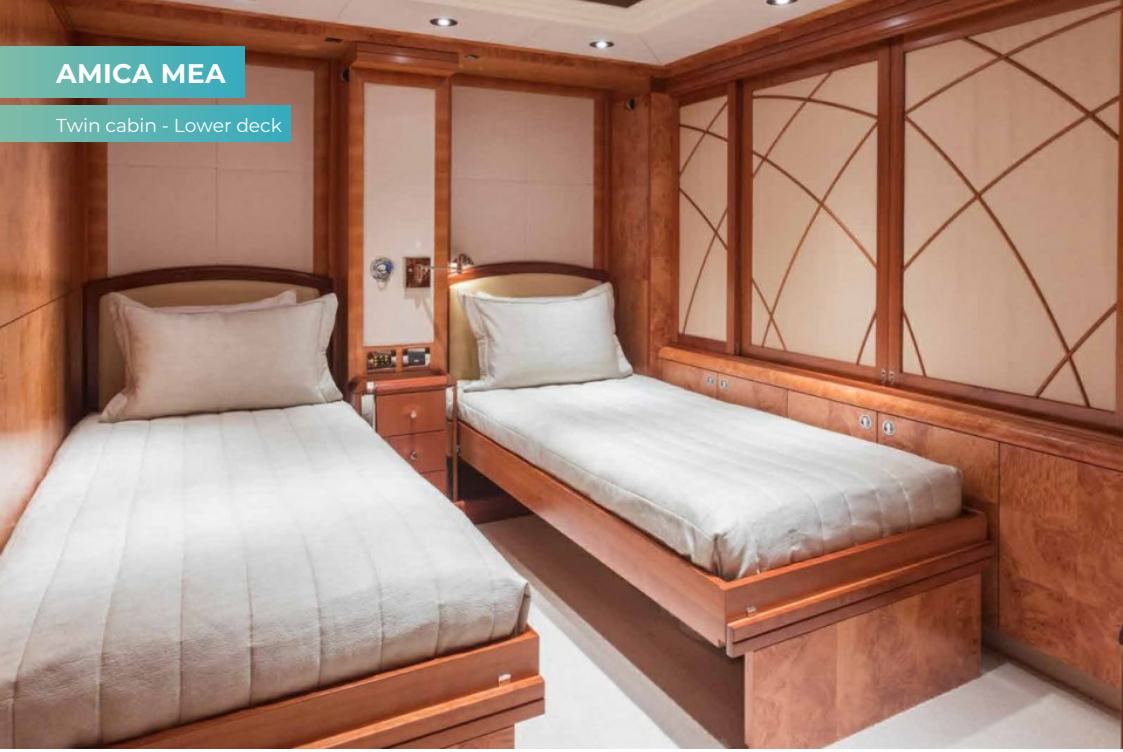


Double cabin - Lower deck



AMICA MEA

Twin cabin - Lower deck



AMICA MEA

SPECIFICATION.



Length
46.3m (152ft)



Built
**2004 (refitted 2020), Royal Hakvoort Shipyard,
The Netherlands**



Interior designer
RC Interior Design



Beam
8.9m (29.2ft)



Draft
2.8m (9.2ft)



Gross tonnage
499



Cruising speed
12 knots



Maximum speed
14 knots



Fuel consumption at cruising speed
192 litres per hour



Engines
2 x 960hp Caterpillar



Guests
11



No. of guest cabins
5 (4 x double, 1 x twin, 1 x additional berth)



Crew
9

[View yacht on website](#)

[Watch yacht video](#)



AMICA MEA

TENDERS & TOYS



1 x Towed tender



1 x Tender



1 x Deck jacuzzi



2 x Waverunners



4 x SeaBobs



1 x eFoil



1 x Jetsurf



1 x Kayak



3 x Stand up paddleboards



Wakeboard



Waterskis



Scuba diving equipment



Snorkelling gear

AMICA MEA

FITNESS & WELLNESS

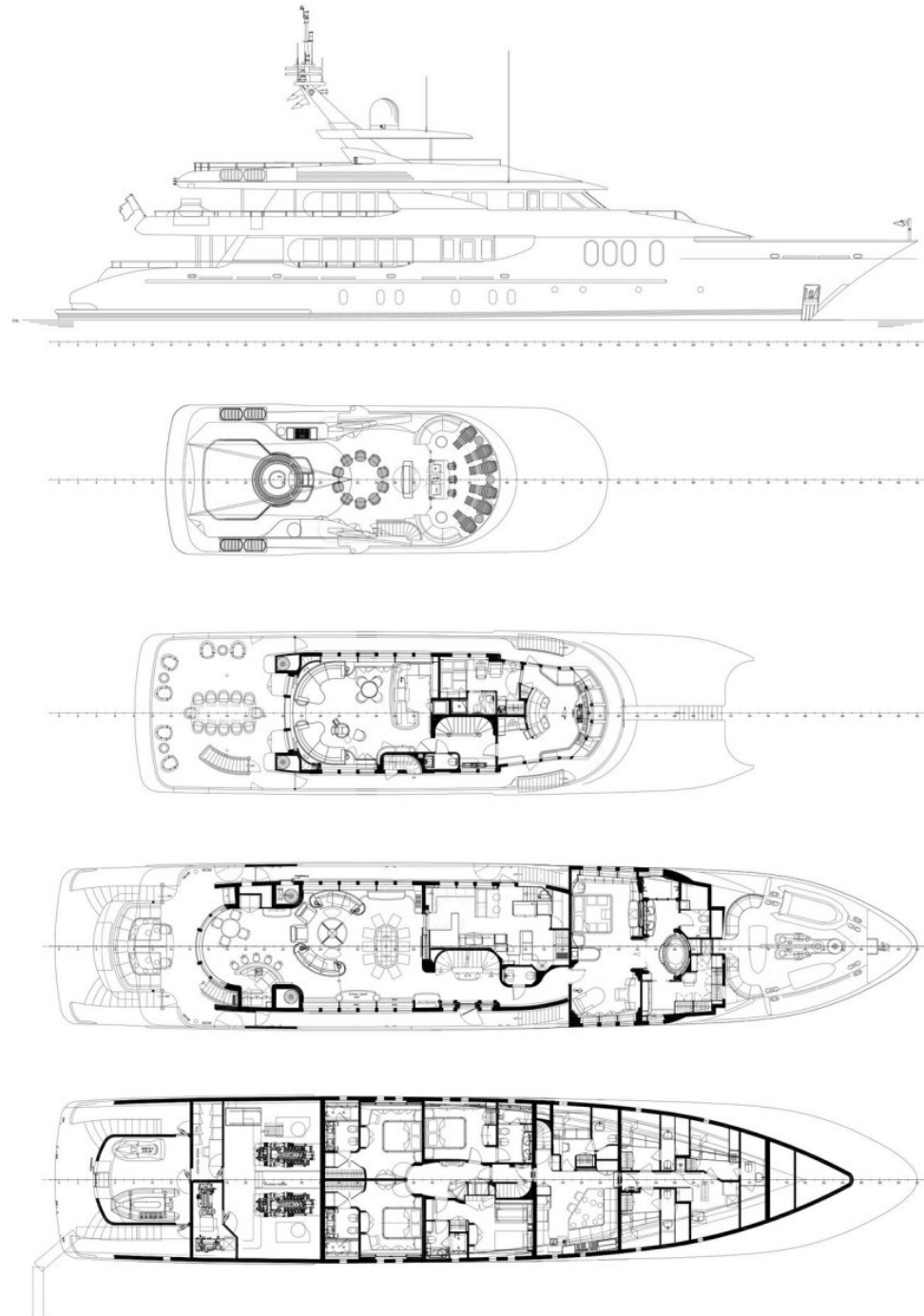


Free weights



Treadmill





BURGESS

WORLD CLASS. WORLD WIDE.

London +44 20 7766 4300	Monaco +377 97 97 81 21	New York +1 212 223 0410	Miami +1 305 672 0150	Singapore +65 9665 8990	Beverly Hills +1 310 424 5112	Palma +34 971 495 413	Athens +30 210 967 1661
Dubai +971 4 425 5874	Phuket +66 7623 9739	Hong Kong +852 6496 2094	Tokyo +81 46 738 8612	Sydney +61 499 945 557	Mumbai +91 98211 67253	Shanghai +86 187 0898 6800	Rio de Janeiro +55 21 2553-3238
Aspen +1 970 710 2294							

Advertising of these vessel(s) in printed publications, on the internet or in any other medium is not permitted without prior written permission from Burgess. All particulars are given in good faith and are believed correct but they cannot be guaranteed.

Last updated: 25 February 2025