

# AMBROSIA

---



AMBROSIA

# SPECIFICATION.



Asking price  
EUR 35,800,000



Built  
2006 (refitted 2017), Benetti, Italy



Length  
64.8m (212.5ft)



Beam  
12.6m (41.3ft)



Draft  
3.6m (11.8ft)



Gross tonnage  
1,639



Cruising speed  
12 knots



Maximum speed  
15 knots



Range  
9,000 nm



Flag  
Cayman Islands



Lying  
Asia



Class  
Lloyd's Register (LR)



Exterior designer  
Stefano Natucci



Interior designer  
Zuretti



Construction  
Hull - Steel, Superstructure - Aluminium, Deck - Teak over Aluminium



Crew  
20



Guests  
14



Cabins  
6 (4 x double, 2 x twin, 2 x additional berths)



Engines  
2 x 1,250hp Caterpillar



Propulsion  
Double Azipod drive

[View yacht on website](#)





# AMBROSIA

Main saloon



Main saloon



Main saloon



Main saloon





# AMBROSIA

Main saloon



Main saloon



Main saloon



Main deck dining





AMBROSIA

Master cabin office



Master cabin



Master cabin



Master cabin en suite





# AMBROSIA

Main deck foyer



Guest cabin



Guest cabin en suite



Guest cabin





# AMBROSIA

Guest cabin en suite



Guest cabin



Guest cabin en suite



Sky lounge





AMBROSIA

Sky lounge



Sky lounge



Main deck aft



Main deck aft





AMBROSIA

Bridge deck aft



Sun deck aft



Sun deck pool



Sun deck aft



BURGESS

Discover the difference.  
burgessyachts.com





AMBROSIA

Observation deck



Cruising



At anchor



BURGESS

Discover the difference.  
burgessyachts.com





# OVERVIEW.

Delivered in 2006 by famous Italian shipyard Benetti, AMBROSIA is a 64.8m (212.5ft) full-custom yacht with a steel hull and aluminium superstructure built to Lloyd's classification. Commissioned by an experienced owner and upgraded over the years, including the fitting of Azipod drives and a USD 4,000,000 refit in 2017, this 1,639GT yacht is highly sophisticated and technically advanced.

Naval architecture is by Benetti and Espen Oeino, exterior design is by Stefano Natucci and Francois Zuretti styled the interiors. Only ever used privately, she was conceived and optimised for ocean-going performance. Twin Azipods driven by a diesel-electric powertrain with two 1,250hp Caterpillar engines give her a range of 9,000nm at 10 knots. On arrival she has zero speed stabilisers and dynamic positioning for virtual anchoring.

There is an intimate crew's nest lounge around a compass table on the observation deck. Steps lead down to the aft sun deck, which has a touch-and-go helipad aft of a counter-current pool, with open-air dining for eight guests shaded by the overhang and a sit-up wet bar with BBQ station. Forward there is seating around two adjustable-height tables that serve as sun lounges or sunpads.

On the upper deck aft, two tables provide another open-air dining option and forward, accessed via stairs from the main deck sidedecks, is a foredeck lounge with C-shaped seating around two coffee tables. Steps lead down to the main deck aft where there is lounge seating shaded by the overhang, an aft-facing sportfishing chair and steps down to the beach club, swim platform and dayhead with shower.

The sun deck has a wellness spa with a gym, health and beauty salon, medical centre and dayhead with shower. The upper deck sky lounge has a desk and sofa to port, a gaming table and a pop-up TV makes the panoramic saloon to starboard a cinema room. Aft, a sit-up bar serves a 'stargate'-themed circular dining room, creating a space-age ambiance.

The main deck has a circular lounge aft with sliding glass doors opening onto the aft deck. Moving forward there is a fully equipped sit-up bar to port opposite a baby grand piano, the main saloon itself with various seating areas and a formal dining room for up to 16 guests.

She welcomes 14 guests in six cabins as well as 20 crew. The full-beam owner's suite is forward on the main deck and features his-and-hers bathrooms sharing a shower room and a spa bath, two walk-in wardrobes, seating port and starboard and a private office. There is a VIP suite on the upper deck, with shower room and spa bath en suite, and the lower deck is home to two double cabins and two twin cabins, all en suite, and each twin has an additional berth.

The lower deck tender garage uses horizontal davits to launch the 8.5m (28ft) Vikal custom limo tender and Tresco custom 7.5m (24.6ft) multi-purpose tender. Toys include jetskis, fishing equipment and a dive compressor with diving gear.

## Key features

---

Impressive 9,000nm range

---

Azipod propulsion system provides efficient & smooth maneuvering

---

Large cinema/panoramic saloon

---

Sun deck spa pool with counter current generator

---

Touch-and-go helipad

---

Onboard medical center and massage/beauty parlor

---

Wheelchair accessible guest elevator

---

Accommodation for 14 guests in 6 cabins

---

Zero speed stabilizers

---

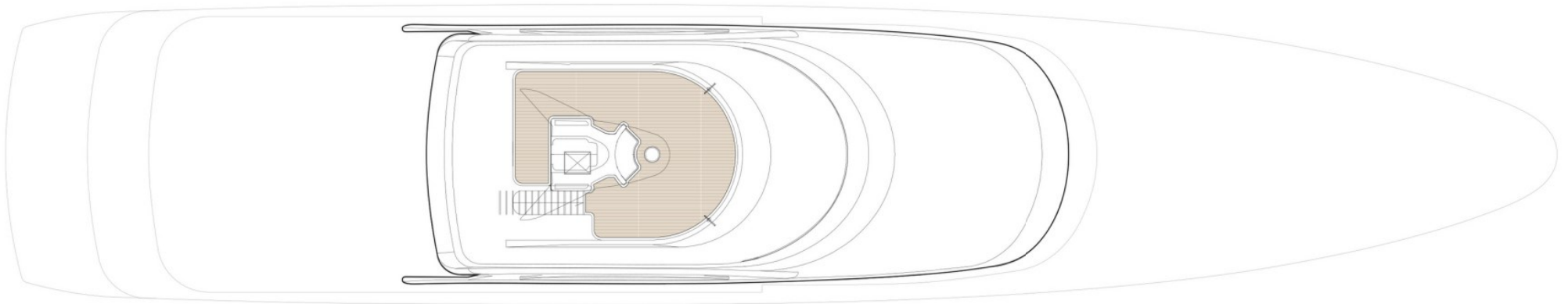
## Tenders

---

8.2m Vikal 8 person custom limousine tender with 300hp Volvo Penta, 7.5m Tresco custom GRP tender with 300hp Volvo Penta, 4.2m Zodiac inflatable rescue tender with 25hp Mercury outboard



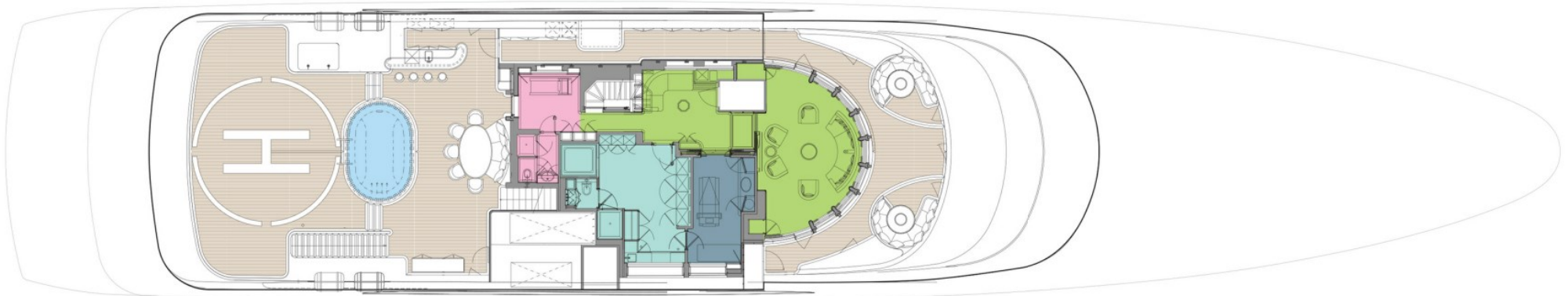
# OBSERVATORY DECK



- GUEST AREAS
- MASTER SUITE
- VIP SUITE
- GUEST CABINS
- MASTER SUITE OFFICE
- HOSPITAL
- GYM
- BEAUTY SALON
- JACUZZI
- POOL



# SUN DECK



- GUEST AREAS
- MASTER SUITE
- VIP SUITE
- GUEST CABINS
- MASTER SUITE OFFICE
- HOSPITAL
- GYM
- BEAUTY SALON
- JACUZZI
- POOL



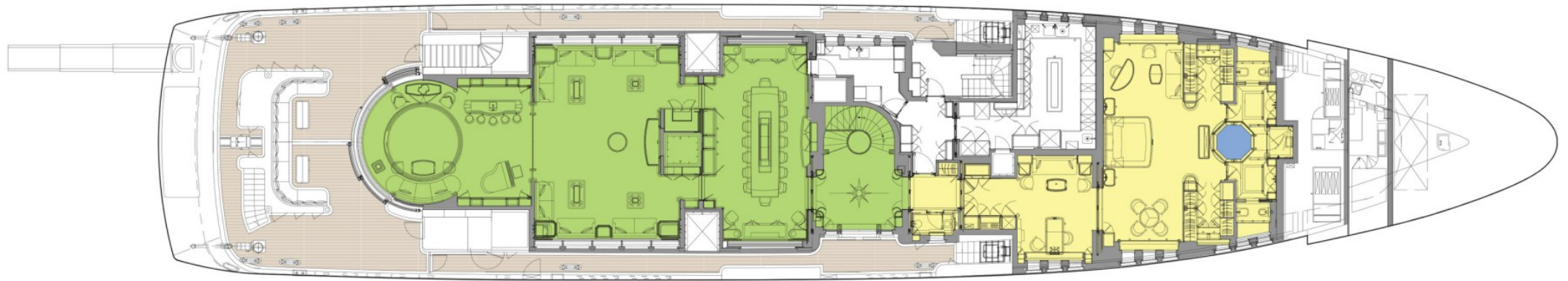
# UPPER DECK



- GUEST AREAS
- MASTER SUITE
- VIP SUITE
- GUEST CABINS
- MASTER SUITE OFFICE
- HOSPITAL
- GYM
- BEAUTY SALON
- JACUZZI
- POOL



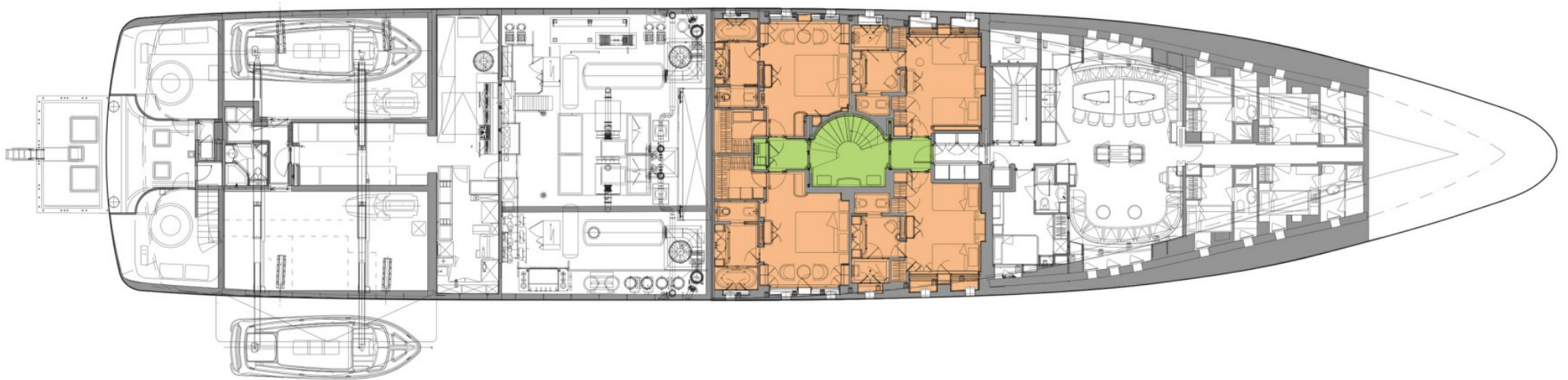
# MAIN DECK



- GUEST AREAS
- MASTER SUITE
- VIP SUITE
- GUEST CABINS
- MASTER SUITE OFFICE
- HOSPITAL
- GYM
- BEAUTY SALON
- JACUZZI
- POOL



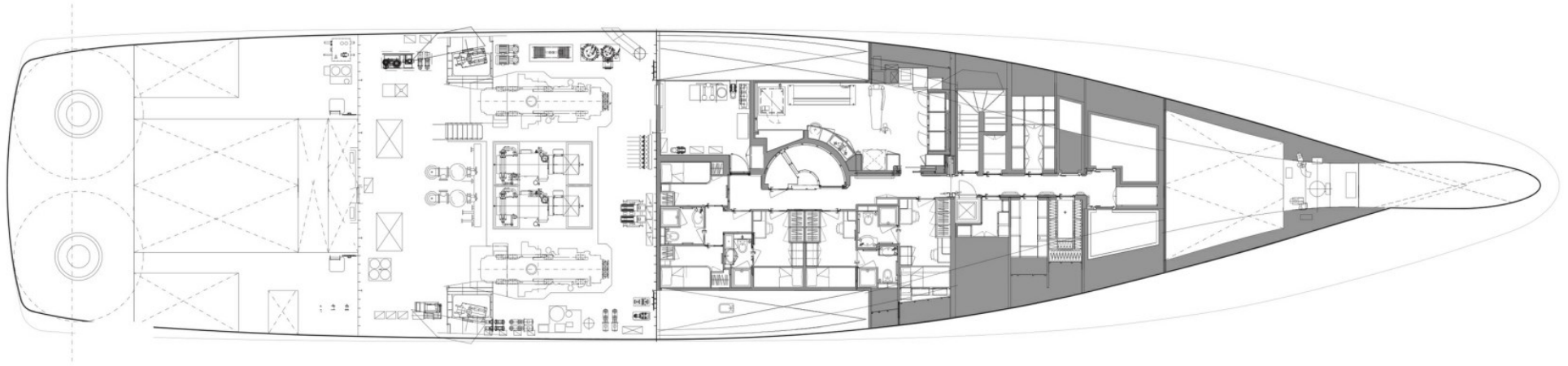
# LOWER DECK



- GUEST AREAS
- MASTER SUITE
- VIP SUITE
- GUEST CABINS
- MASTER SUITE OFFICE
- HOSPITAL
- GYM
- BEAUTY SALON
- JACUZZI
- POOL



# BOTTOM DECK





# BURGESS

# WORLD CLASS. WORLD WIDE.

London +44 20 7766 4300	Monaco +377 97 97 81 21	New York +1 212 223 0410	Miami +1 305 672 0150	Singapore +65 9665 8990	Beverly Hills +1 310 424 5112	Palma +34 971 495 413	Athens +30 210 967 1661
	Dubai +971 4 425 5874	Phuket +66 7623 9739	Hong Kong +852 6496 2094	Tokyo +81 46 738 8612	Sydney +61 499 945 557	Mumbai +91 98211 67253	

---

Advertising of these vessel(s) in printed publications, on the internet or in any other medium is not permitted without prior written permission from Burgess. All particulars are given in good faith and are believed correct but they cannot be guaranteed.

Last updated: 03 April 2024