

AMARYLLIS



OVERVIEW.

Launched in 2011, AMARYLLIS is the one of the most successful charter yachts afloat. With exceptional pedigree, her interior design is a stunning fusion of Art Déco, Art Nouveau and Belle Époque styling.

Start the day with a workout in the beach club gym by the water's edge with open air and ocean views. Follow your session with a cooling dip or soothe your aching muscles in the Asian spa with plunge pool, sauna and steam room. Enjoy a well-deserved breakfast on the bridge deck and discuss the day's plans with the captain. After breakfast, relax and explore the many lounging areas across the five decks. Guests gravitate to the sun deck where there is a large jacuzzi pool with both sun pads and more shaded lounging forward. Alternatively, the main deck aft is always a great space to spend family time.

After a morning spent sunbathing and relaxing, take lunch al fresco on the bridge deck's large dining table. Large sliding doors lead through to the skylounge, the perfect place to retreat to when the sun is at its height, creating an indoor-outdoor environment. Then it's time for some fun on the water with AMARYLLIS' treasure trove of toys, including waterskis, inflatables toys, jetskis, wakeboards and fishing equipment.

Back onboard, freshen up in the yacht's superb accommodation. Located on the upper deck, the full beam master suite provides uninterrupted panoramic views from the huge windows. It also has his and hers en suite bathrooms, separate dressing rooms, and direct access to a private terrace forward – the perfect spot for a private sundowner. The VIP suite is located on the main deck comprising a large berth with en suite, dressing room and spacious lobby, while there are a further four en suite guest cabins, three double cabins and one twin, on the lower deck.

After your private sundowner, join your guests on the upper deck aft deck for pre-dinner cocktails while the chef prepares a delicious dinner for you to enjoy in the stunning formal dining area. Encircled with curved glass doors that can be opened to the elements, a circular table seats 12 guests beneath a bronze and crystal chandelier. After dinner, retire to the piano lounge, enjoy a movie on the large screen or head down to the main deck via the impressive central staircase or glass elevator and relax in the main saloon or the seating aft, sharing stories from the day and making plans for the morning. Relax, eat, sleep, repeat.

Key features

Spa facilities: massage area, sauna, steam room, and plunge pool

Beach Club at sea level

Private master deck

Fully equipped gym

Elevator serving lower to bridge decks

Pool on the sun deck

Zero speed stabilisers to reduce any rolling motion while at anchor

AMARYLLIS

Bridge deck aft sun loungers



Owner's private deck



Main deck lounge



Main deck lounge



BURGESS

Discover the difference.
burgessyachts.com



AMARYLLIS

Sky lounge



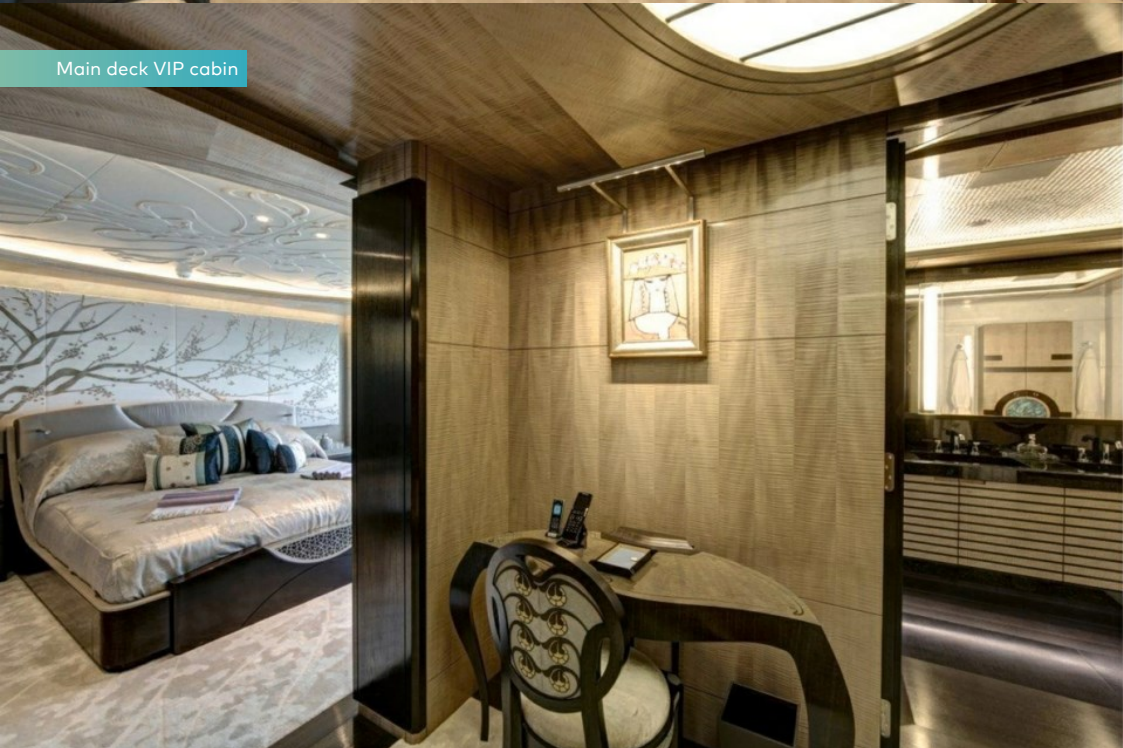
Upper deck master cabin



Master bathroom en suite



Main deck VIP cabin



AMARYLLIS

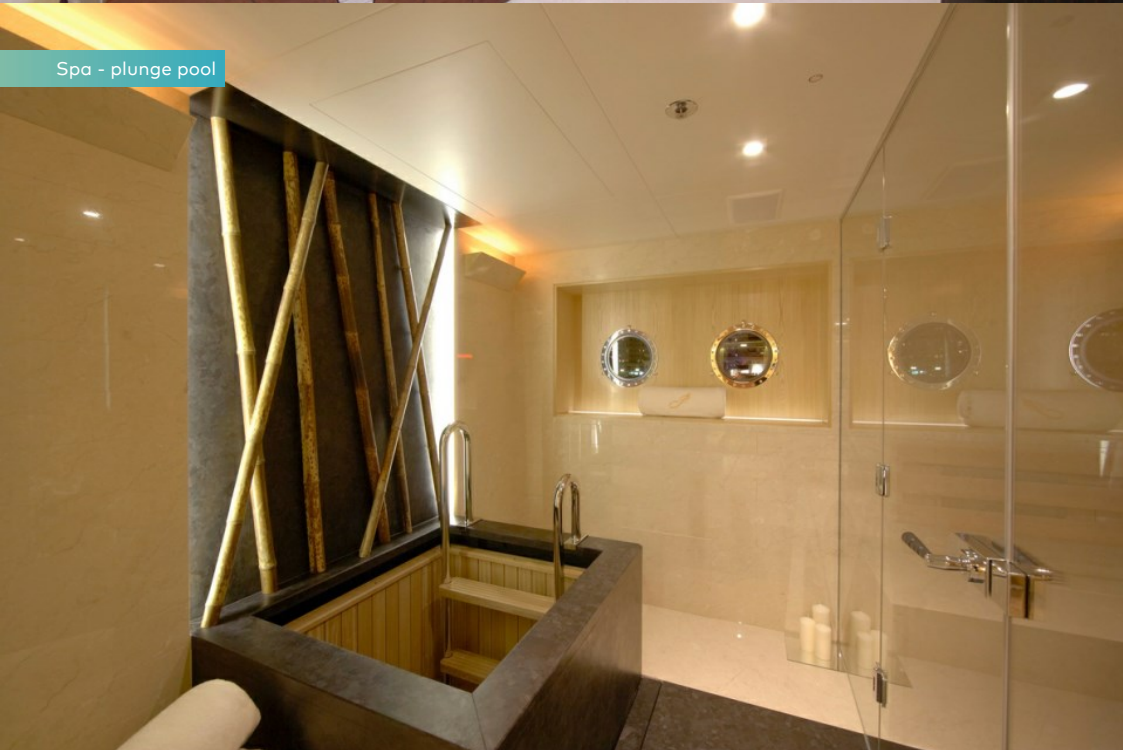
Lower deck twin cabin



Beach club



Spa - plunge pool



AMARYLLIS

SPECIFICATION.



Length
78.4m (257.2ft)



Built
2011, Abeking & Rasmussen, Germany



Interior designer
Reymond Langton Design



Beam
12.8m (42ft)



Draft
3.5m (11.4ft)



Gross tonnage
2,180



Cruising speed
14 knots



Maximum speed
16.5 knots



Fuel consumption at cruising speed
555 litres per hour



Engines
2 x 2,000hp Caterpillar



Guests
12



No. of guest cabins
6 (5 x double, 1 x twin)



Crew
23

[View yacht on website](#)

[Watch yacht video](#)



BURGESS

Discover the difference.
burgessyachts.com



EQUIPMENT.

Tenders & toys



3 × Tenders



1 × Deck jacuzzi



Pool



Waterslide



RYA training centre for jetskis
& waverunners



2 × Waverunners



1 × Stand up jetski



2 × SeaBobs



1 × Jetsurf



1 × eFoil



1 × Stand up paddleboard



Wakeboard



Surfboard



Waterskis



Inflatable tows



Fishing gear

Fitness & wellness



Cross trainer



Exercise balls



Free weights



Multi gym



Power plate



Rowing machine



Treadmill



Upright stationary bike



Vertical climber



Yoga mats



Hammam/Steam room



Massage room



Sauna



BURGESS

WORLD CLASS. WORLD WIDE.

London +44 20 7766 4300	Monaco +377 97 97 81 21	New York +1 212 223 0410	Miami +1 305 672 0150	Singapore +65 9665 8990	Beverly Hills +1 310 424 5112	Palma +34 971 495 413	Athens +30 210 967 1661
	Dubai +971 4 425 5874	Phuket +66 7623 9739	Hong Kong +852 6496 2094	Tokyo +81 46 738 8612	Sydney +61 499 945 557	Mumbai +91 98211 67253	

Advertising of these vessel(s) in printed publications, on the internet or in any other medium is not permitted without prior written permission from Burgess. All particulars are given in good faith and are believed correct but they cannot be guaranteed.

Last updated: 01 March 2024