

AMANTI



AMANTI

SPÉCIFICATIONS.



Prix demandé
USD 26 800 000



Chantier
2003, Feadship, Royal Van Lent, The Netherlands



Longueur
51,8m



Largeur
10,1m



Tirant d'eau
3,1m



Tonnage brut
863



Vitesse de croisière
12 knots



Vitesse maximale
15 knots



Autonomie
5 300 nm



Pavillon
Cayman Islands



Position
USA



Classe
Lloyd's Register, MCA



Designer extérieur
De Voogt



Designer d'intérieur
Donald Starkey



Construction
Hull - Steel, Superstructure - Aluminium



Équipage
12



Invités
13



Cabines
7 (4 x double, 2 x twin, 1 x single)



Moteurs
2 x 1 500hp Caterpillar



Propulsion
Twin screw diesel yacht

Note

Not available for sale to US residents while in US waters.

[Voir le yacht sur le site](#)

[Regarder la vidéo du yacht](#)



AMANTI

Main deck lounge



Main deck lounge



Main deck formal dining area



Master office



BURGESS

Discover the difference.
burgessyachts.com



AMANTI

Master cabin



Master cabin



Master en suite



Master walk-in closet



AMANTI

Double cabin



Guest bathroom



Double cabin



Twin cabin



BURGESS

Discover the difference.
burgessyachts.com



AMANTI

Guest bathroom



Twin cabin



Staff single cabin



Gym



AMANTI

Elevator



Bridge deck bar



VIP cabin



Sky lounge



AMANTI

Sky lounge



Bridge



Sun deck forward



Sun deck forward



BURGESS

Discover the difference.
burgessyachts.com



AMANTI

Sun deck jacuzzi



Sun deck jacuzzi



Sun deck aft



Bridge deck aft



AMANTI

Bridge deck aft



Bridge deck forward



Bridge deck forward



Foredeck



AMANTI

Foredeck



Main deck aft



Main deck aft



Main deck aft



BURGESS

Discover the difference.
burgessyachts.com



AMANTI

Galley



Engine room



Stern view



Cruising



AMANTI

Cruising



Aerial view



BURGESS

Discover the difference.
burgessyachts.com



AMANTI

APERÇU.

AMANTI is a 51.8m (170ft) yacht delivered in 2003 by a Dutch shipyard that sets all the standards for quality: Feadship, Royal Van Lent. She has a gross tonnage of 863GT with a steel hull and an aluminium superstructure constructed to Lloyd's classification. Her naval architecture and exterior design are by Feadship's preferred studio, De Voogt, while her interiors are styled by British design legend Donald Starkey, completing the yacht's impeccable northern European pedigree.

Recent works include a new IMO Tier III-compliant emissions treatment system for her generators, which was installed by Feadship in 2019, and she completed her 20-year survey in 2023.

AMANTI has a split-level sun deck. The aft section serves as a boat deck on passage, complete with deck crane to launch the tender and two waverunners. Four steps lead up to the forward section where there is exercise equipment and a jacuzzi to the rear of the mast. Moving forward there is an al fresco lounge to starboard, a wet bar to port and a central forward-facing observation bench. The base of the radar mast conceals a spiral staircase to the bridge deck and an elevator that serves all guest decks.

On the bridge deck aft, there is forward-facing bench seating with low coffee tables to the rear and al fresco dining with a wet bar towards the doors to the sky lounge. On the main deck aft there is a wet bar to starboard, a central open-air dining table with forward-facing banquette seating. Steps either side lead down to the swim platform and tender garage.

She welcomes up to 13 guests in seven suites. The main deck owner's suite is full beam and entered via a private office where there is access to the dressing room, which in turn leads to the en suite bathroom with bath and shower room. The forward-facing king-sized berth has a desk to port and a lounge area to starboard.

There is also a VIP suite on the bridge deck with a desk, a king-sized double berth and an en suite bathroom with twin sinks and a bath. The remaining guest accommodation, on the lower deck, consists of two double suites, two twin cabins and a single cabin, all en suite.

Aft of the owner's suite is the galley, dayhead and lobby, aft of which is the formal dining area that can be enclosed for greater privacy, doubling as a boardroom. Towards the rear is the main saloon with sofa seating and armchairs arranged around a central coffee table. The bridge deck sky lounge features L-shaped sofa seating and a games table.

AMANTI is powered by two 1,500hp Caterpillar diesel engines giving her a cruising speed of 12 knots, a top speed of 15 knots and a transatlantic cruising range of 5,300nm.

Principales caractéristiques

Northern European pedigree, maintained to the highest degree

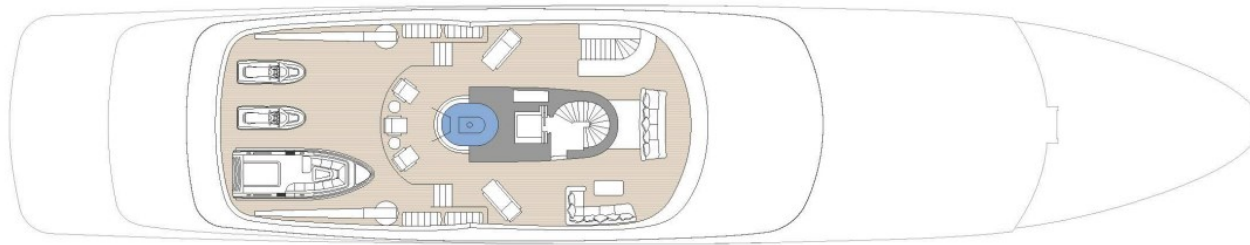
Tier III Compliant Generators - Xeamos exhaust treatment system with Urea installed by Feadship in 2019

7 spacious cabins with accommodation for up to 13 guests

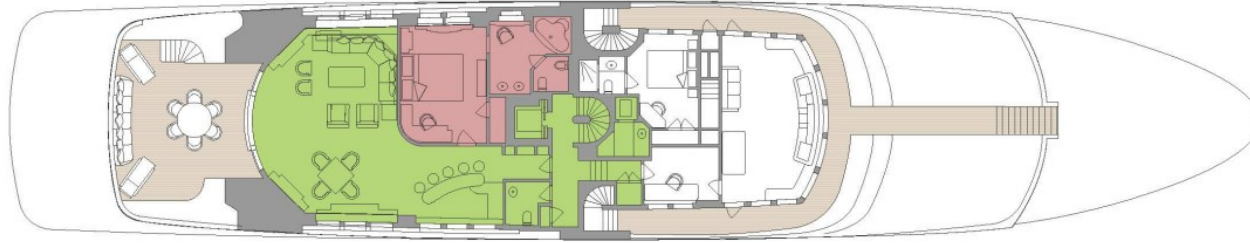
20-year survey completed in 2023

Elevator accessing all decks

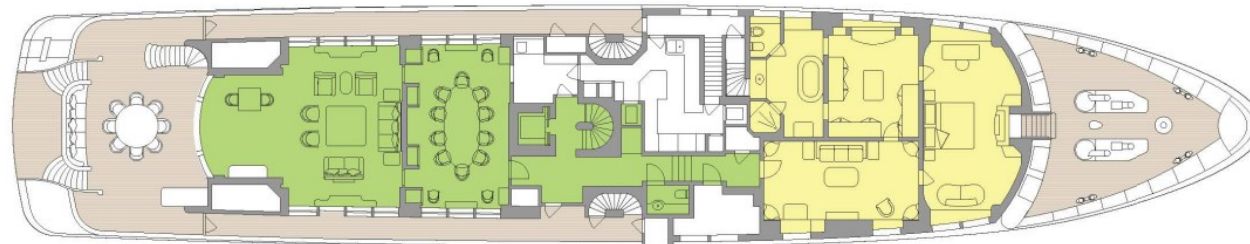
New gray hull repainted in 2023



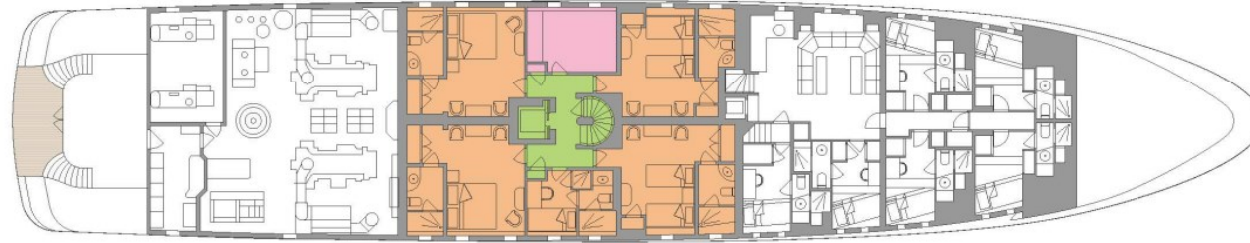
SUN DECK



UPPER DECK



MAIN DECK



LOWER DECK

■ GUEST AREAS ■ MASTER SUITE ■ VIP SUITE ■ GUEST CABINS ■ GYM ■ JACUZZI

BURGESS

WORLD CLASS.
WORLD WIDE.

London +44 20 7766 4300	Monaco +377 97 97 81 21	New York +1 212 223 0410	Miami +1 305 672 0150	Singapore +65 9665 8990	Beverly Hills +1 310 424 5112	Palma +34 971 495 413	Athens +30 210 967 1661
Dubai +971 4 425 5874	Phuket +66 7623 9739	Hong Kong +852 6496 2094	Tokyo +81 46 738 8612	Sydney +61 499 945 557	Mumbai +91 98211 67253	Shanghai +86 187 0898 6800	

La publicité de ce(s) navire(s) dans des publications imprimées, sur Internet ou sur tout autre support n'est pas autorisée sans l'autorisation écrite préalable de Burgess.
Toutes les informations sont données de bonne foi et sont considérées comme exactes, mais elles ne peuvent être garanties.

Dernière mise à jour : 15 avril 2024