

# ALTAVITA

---





# ALTAVITA SPÉCIFICATIONS.



Prix demandé  
**USD 10 250 000**



Chantier  
**2018, Gulf Craft, United Arab Emirates**



Longueur  
**38,4m**



Largeur  
**7,5m**



Tirant d'eau  
**2m**



Tonnage brut  
**299**



Vitesse de croisière  
**14 knots**



Vitesse maximale  
**18 knots**



Autonomie  
**1 100 nm**



Pavillon  
**Marshall Islands**



Position  
**USA**



Classe  
**Bureau Veritas, hull MACH, MCA Large Yacht  
Code 3 (LY3) AMSA Commercial Vessel Survey  
Class 2C**



Designer extérieur  
**Gulf Craft Inc**



Designer d'intérieur  
**Nina Seirafi Design**



Construction  
**Hull - GRP, Superstructure - GRP, Deck - Teak**



Équipage  
**7**



Invités  
**12**



Cabines  
**5 (3 × double, 2 × twin, 2 × additional berths)**



Moteurs  
**2 × 1 902hp Caterpillar**



Propulsion  
**Twin screw diesel yacht**

[Voir le yacht sur le site](#)





## ALTAVITA

Main deck lounge



Main deck dining room



Main deck lounge folding balcony



Master cabin





## ALTAVITA

Master bathroom en suite



Master bathroom en suite



Main deck foyer





## ALTAVITA

Master bathroom en suite



Master bathroom en suite



Master cabin



Double cabin en suite





## ALTAVITA

Twin cabin



Twin cabin bathroom en suite



Sky lounge



Sky lounge





ALTAVITA

Sky lounge



Aft deck dining area



Forward seating area



BURGESS

Discover the difference.  
[burgessyachts.com](http://burgessyachts.com)





ALTAVITA

Sun deck



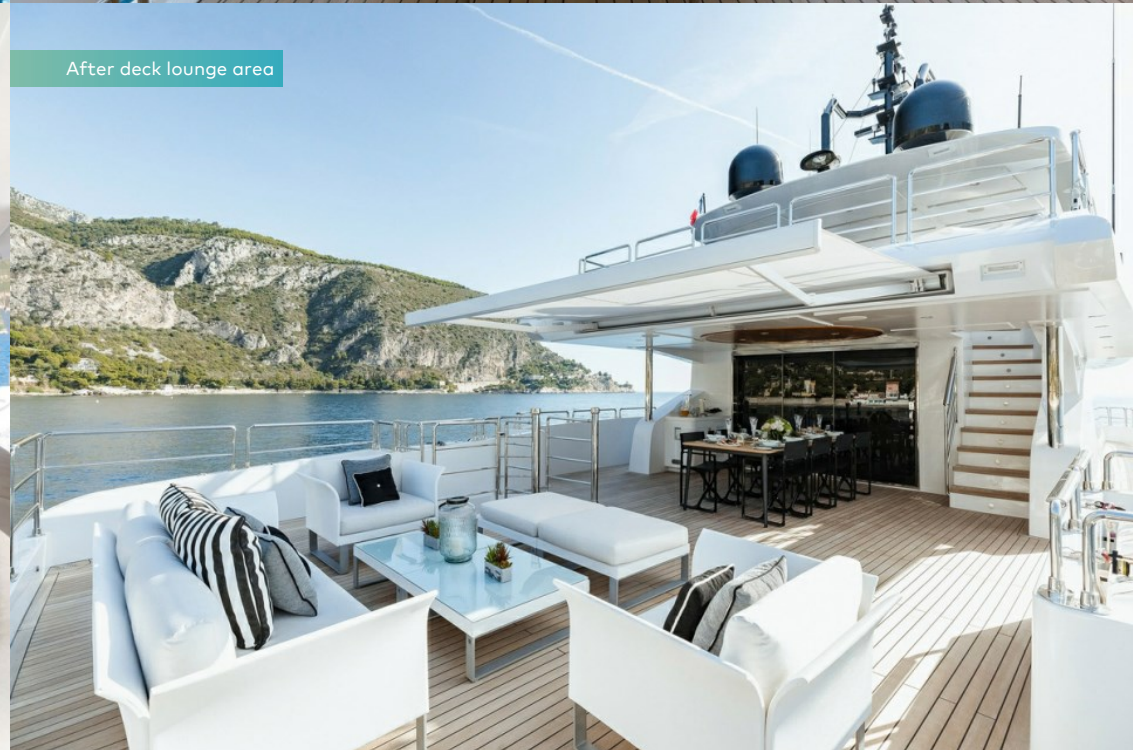
Sun deck jacuzzi



Sun deck



After deck lounge area



BURGESS

Discover the difference.  
[burgessyachts.com](http://burgessyachts.com)





## ALTAVITA

Aft hydraulic platform



Aerial view



Aerial view



Stern view



BURGESS

Discover the difference.  
burgessyachts.com





ALTAVITA

At anchor



BURGESS

Discover the difference.  
[burgessyachts.com](http://burgessyachts.com)





ALTAVITA

# APERÇU.

ALTAVITA is a recent delivery from the highly successful Majesty 125 series of yachts by the United Arab Emirates' Gulf Craft, with exteriors by the shipyard and tasteful contemporary interiors by Nina Seirafi Design.

The secret of the series' success is the abundant exterior spaces and the focus on integrating them with light, bright, airy interiors. ALTAVITA herself has a range of upgrades that distinguish her as unique, enhancing her appeal still further. A spacious sun deck has a jacuzzi aft, a fully equipped sit up bar with a Teppanyaki grill to starboard and an open air dining area to port, both shaded by the hard top. Forward is lounge seating and a flybridge.

The bridge deck sky lounge features L-shaped seating forward to port opposite a large TV screen for movie nights, a fully equipped bar port aft and a games table to starboard. Sliding glass doors lead aft to an extensive aft bridge deck with an open air dining area and aft of that is a sun lounge shaded by a retractable awning. Side decks lead to a Portuguese bridge forward, adding to the al fresco options.

On the main deck there is a formal dining area forward of the expansive main saloon with broad picture windows and sliding glass doors port and starboard as well as aft, which really open up the space. At night a large TV screen makes this another home cinema option. Sliding glass doors open onto yet another al fresco dining option and steps either side lead down to the swim platform and tender garage. She welcomes up to 12 guests in five cabins. The full beam master suite is forward on the main deck and features large picture windows, a his and hers bathroom, a walk in wardrobe and a separate lounge area.

On the lower deck are two VIP double suites and two twin cabins, each with an additional pullman berth, completing her family friendly accommodation.

Powered by twin 1,902hp Caterpillar engines, ALTAVITA boasts a cruising speed of 10-12 knots and a maximum speed of 19 knots, with a range of 1,100 nautical miles.

## Principales caractéristiques

---

**An incredibly spacious interior normally found in a much larger superyacht**

---

**Stylish and contemporary interior design and attention to detail from the owner's team**

---

**Hydraulic swim platform**

---

**Balcony off the main deck saloon**

---

**Large jacuzzi on the sun deck**

---

**Zero speed stabilisers**

---

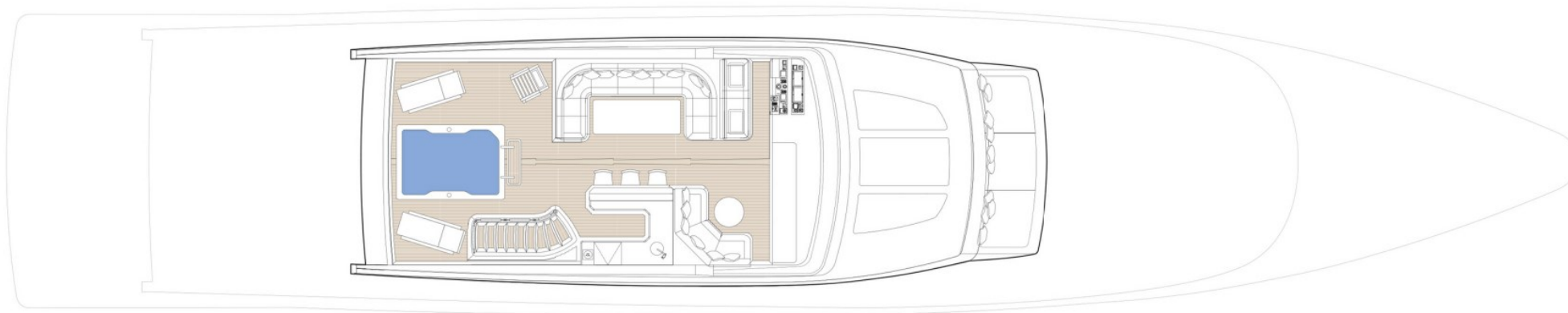
## Annexes

---

CASTOLDI JT16



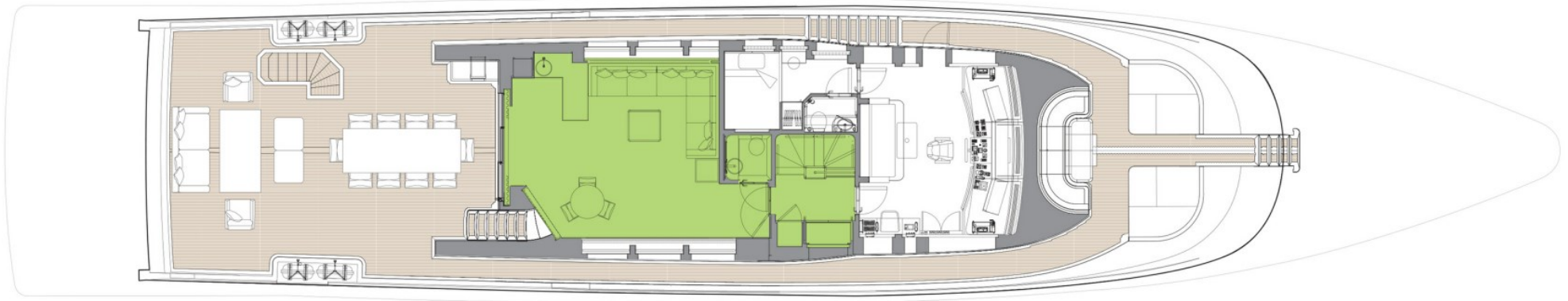
# SUN DECK



GUEST AREAS
  OWNER'S SUITE
  GUEST CABINS
  OWNER'S OFFICE
  JACUZZI



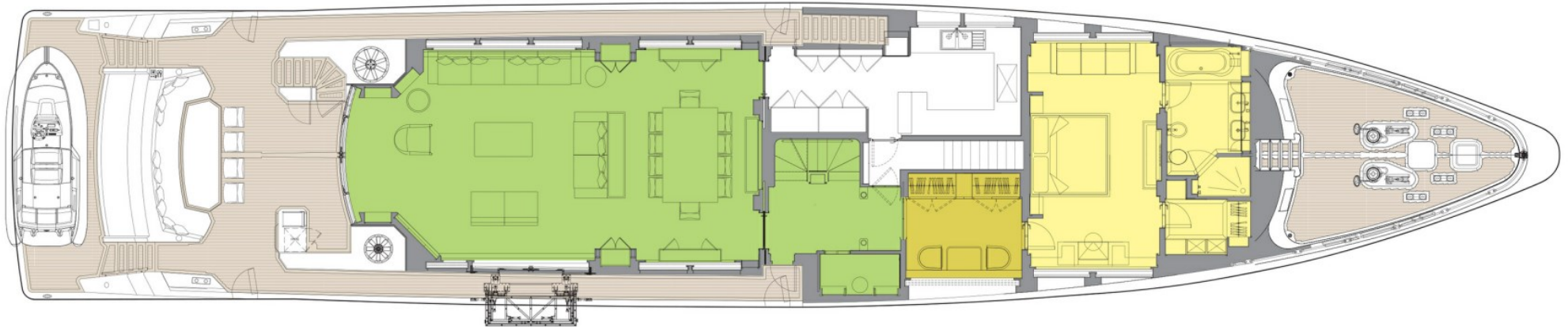
# UPPER DECK



GUEST AREAS
  OWNER'S SUITE
  GUEST CABINS
  OWNER'S OFFICE
  JACUZZI



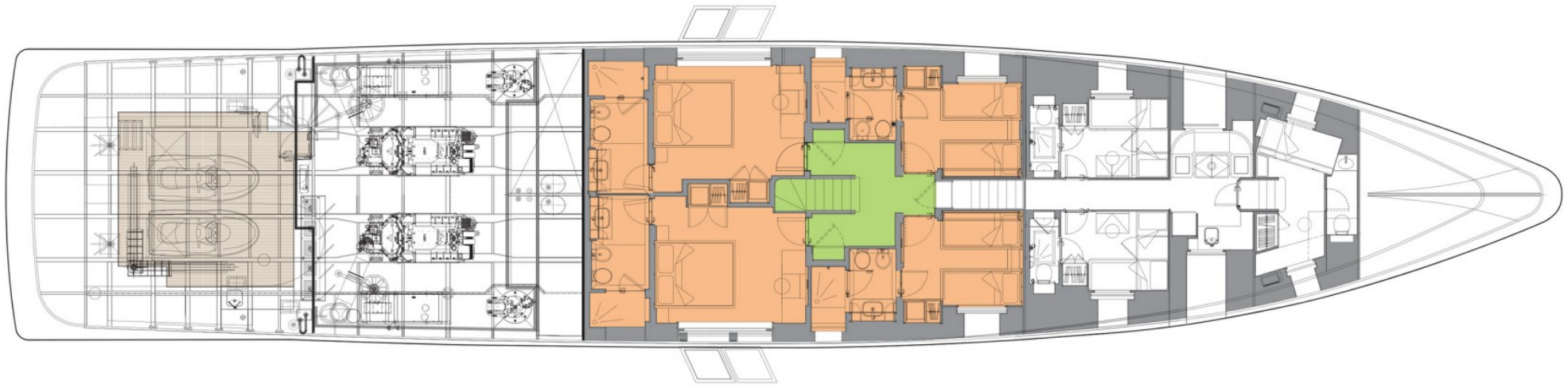
# MAIN DECK



GUEST AREAS
  OWNER'S SUITE
  GUEST CABINS
  OWNER'S OFFICE
  JACUZZI



# LOWER DECK



GUEST AREAS
  OWNER'S SUITE
  GUEST CABINS
  OWNER'S OFFICE
  JACUZZI



# BURGESS

# WORLD CLASS. WORLD WIDE.

London +44 20 7766 4300	Monaco +377 97 97 81 21	New York +1 212 223 0410	Miami +1 305 672 0150	Singapore +65 9665 8990	Beverly Hills +1 310 424 5112	Palma +34 971 495 413	Athens +30 210 967 1661
	Dubai +971 4 425 5874	Phuket +66 7623 9739	Hong Kong +852 6496 2094	Tokyo +81 46 738 8612	Sydney +61 499 945 557	Mumbai +91 98211 67253	

La publicité de ce(s) navire(s) dans des publications imprimées, sur Internet ou sur tout autre support n'est pas autorisée sans l'autorisation écrite préalable de Burgess.  
Toutes les informations sont données de bonne foi et sont considérées comme exactes, mais elles ne peuvent être garanties.

Dernière mise à jour : 20 mars 2024