

AKIKO



AKIKO

SPECIFICATION.



Asking price
AUD 16,250,000 (Tax paid)



Built
2007 (refitted 2023), Alloy Yachts, New Zealand



Length
34.2m (112.2ft)



Beam
7.7m (25.3ft)



Draft
2.4m (7.9ft)



Gross tonnage
281



Cruising speed
10 knots



Maximum speed
13 knots



Range
4,000 nm



Flag
Cook Islands



Lying
Australasia



Class
Lloyd's Register, built to MCA Large yacht Code



Exterior designer
Gregory C. Marshall Ltd



Interior designer
Alloy Yachts



Construction
Hull - Aluminium, Superstructure - Aluminium



Crew
6



Guests
10



Cabins
5 (3 × double, 2 × twin)



Engines
2 × 425hp Caterpillar



Propulsion
Twin screw diesel yacht

[View yacht on website](#)

[Watch yacht video](#)



AKIKO

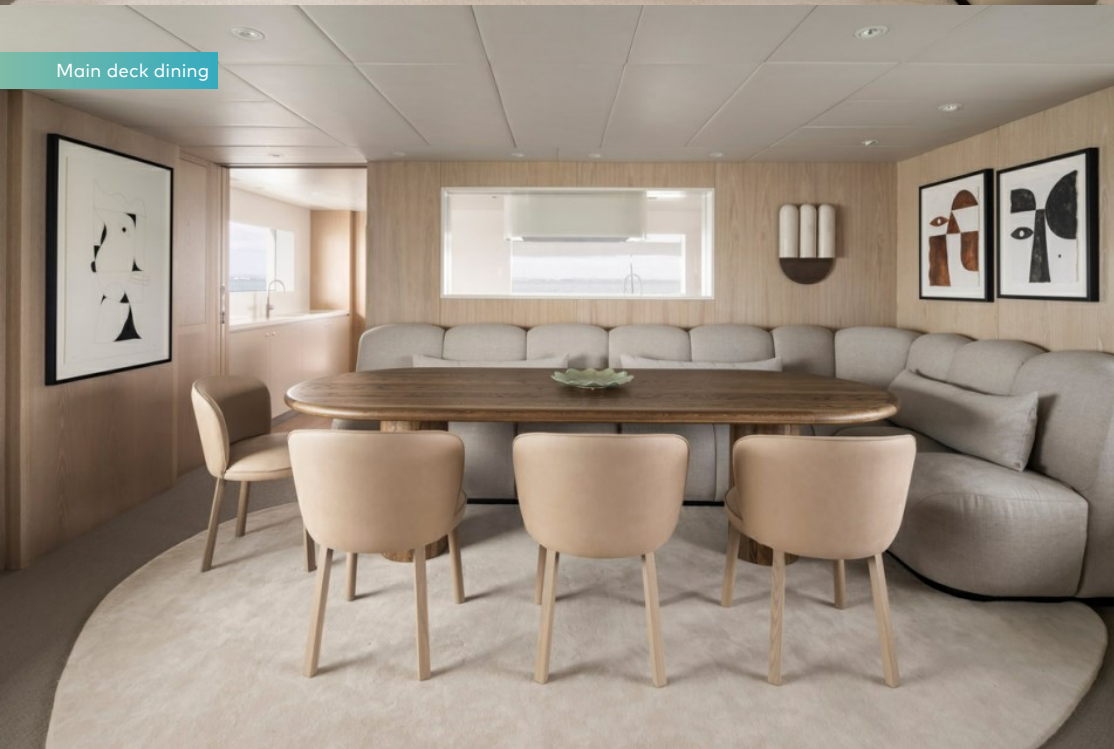
Main deck lounge



Main deck lounge



Main deck dining



Main deck dining



BURGESS

Discover the difference.
burgessyachts.com



AKIKO

Bridge deck master cabin



Main deck VIP cabin



Lower deck triple cabin



VIP bathroom en suite



BURGESS

Discover the difference.
burgessyachts.com



AKIKO

Flybridge



Main deck aft



Main deck aft



Foredeck



BURGESS

Discover the difference.
burgessyachts.com



OVERVIEW.

AKIKO is an award winning 34m (111.5ft) tri-deck explorer yacht delivered by Alloy Yachts, New Zealand, in 2007 with naval architecture, interior and exterior designs by Gregory C Marshall.

Launched as VVS1, she won Best Displacement Motoryacht under 500GT at the World Superyacht Awards 2008 and three other World Yacht Trophies design awards in 2008. Built in entirely in aluminium to Lloyd's classification and MCA compliant, AKIKO has recently undergone an extensive refit in 2023.

Exterior spaces include a sun lounge on the flybridge aft with removable transparent screens forward and either side. The bridge deck aft is where her two tenders are stowed on passage and it serves as a large private terrace for the owner's suite at anchor. There is a BBQ on the main deck aft and steps lead down to a swim platform.

She features spacious living areas and large picture windows give an abundance of light. Her contemporary interior is an expertly crafted combination of restful natural colours inspired by her home cruising grounds in Australia, featuring bamboo flooring inlaid with wenge, wenge cabinetry and white stained oak.

AKIKO has accommodation for 12 guests in five vibrant cabins. The master suite is full beam and located on the bridge deck overlooking its own terrace on the bridge deck aft, on which. A VIP cabin located forward on the main deck is complemented by a double cabin and two twin cabins on the lower deck, each with an additional berth.

Twin 425hp Caterpillar diesels give her a top speed of 13 knots and a cruising speed of 12 knots and an ocean-going range of 4,300nm.

Key features

Australian GST paid

World Superyacht Awards 2008: Best Displacement Motor yacht of below 500GT

Best Auto, Marine and Aircraft Asia Pacific" at the CEDIA awards for the Asia Pacific Region for technology install

Extensive 2016 refit and recent 2019-20 works completed

A long range custom built explorer yacht

Striking exterior lines from Gregory Marshall

Take the opportunity to explore the Southern Hemisphere

Tenders

1 x 5.3m ADVENTURER flat bottom tender (2016)

BURGESS

WORLD CLASS. WORLD WIDE.

London +44 20 7766 4300	Monaco +377 97 97 81 21	New York +1 212 223 0410	Miami +1 305 672 0150	Singapore +65 9665 8990	Beverly Hills +1 310 424 5112	Palma +34 971 495 413	Athens +30 210 967 1661
Dubai +971 4 425 5874	Phuket +66 7623 9739	Hong Kong +852 6496 2094	Tokyo +81 46 738 8612	Sydney +61 499 945 557	Mumbai +91 98211 67253	Shanghai +86 187 0898 6800	

Advertising of these vessel(s) in printed publications, on the internet or in any other medium is not permitted without prior written permission from Burgess. All particulars are given in good faith and are believed correct but they cannot be guaranteed.

Last updated: 15 April 2024