

AIR



AIR

APERÇU.

AIR is the first Superyacht built under Large Yacht code to have a fully certified commercial helicopter pad. Other highlights include massage and steam rooms and a large foldable swimming platform with bar.

AIR has an exceptionally sleek and elegant exterior with modern lines, a unique matt black steel hull and an aluminium superstructure. She measures 81 meters (265.7 feet) in length and has a beam of 11.6m.

AIR's luxurious, highly sophisticated and minimalistic interior, created by Remi Tessier Design, is stunning and is enhanced by impressive artwork, large windows and open doorways. The main materials used include matt-finished sycamore, leather, matt-finished special paint, high gloss stainless steel, palladium leaf, back-lit white onyx, off-white and black limestone and a wealth of carved glass. AIR is extremely spacious and can accommodate 12 guests in 7 large staterooms including an impressive split level master suite, two guest cabins on the upper deck, one on the main deck and three on the lower deck. The owner's observation lounge boasts a breath-taking view over the eight-metre long pool on the vast main deck forward area. The magnificent sun deck offers a well-equipped gym, lounging areas aft and forward with jacuzzi, and a 102" pop-up television screen for outdoor movie viewing.

Principales caractéristiques

Spa facilities: massage room, steam room

Fully equipped gym

Fully certified commercial helicopter pad

Elevator to all decks

Pool on main deck forward

Jacuzzi on the sun deck

Zero speed stabilisers to reduce any rolling motion while at anchor

AIR

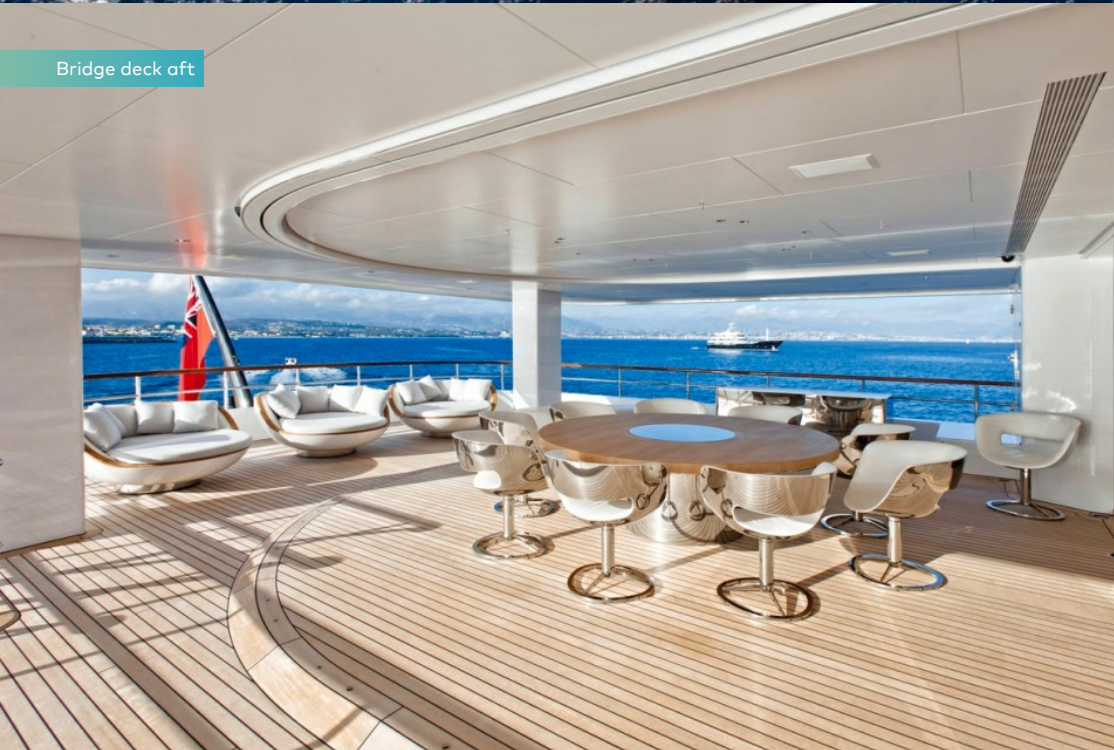
Aerial view



Sun deck jacuzzi



Bridge deck aft



Bridge deck aft dining area



BURGESS

Discover the difference.
burgessyachts.com



AIR

Main deck aft



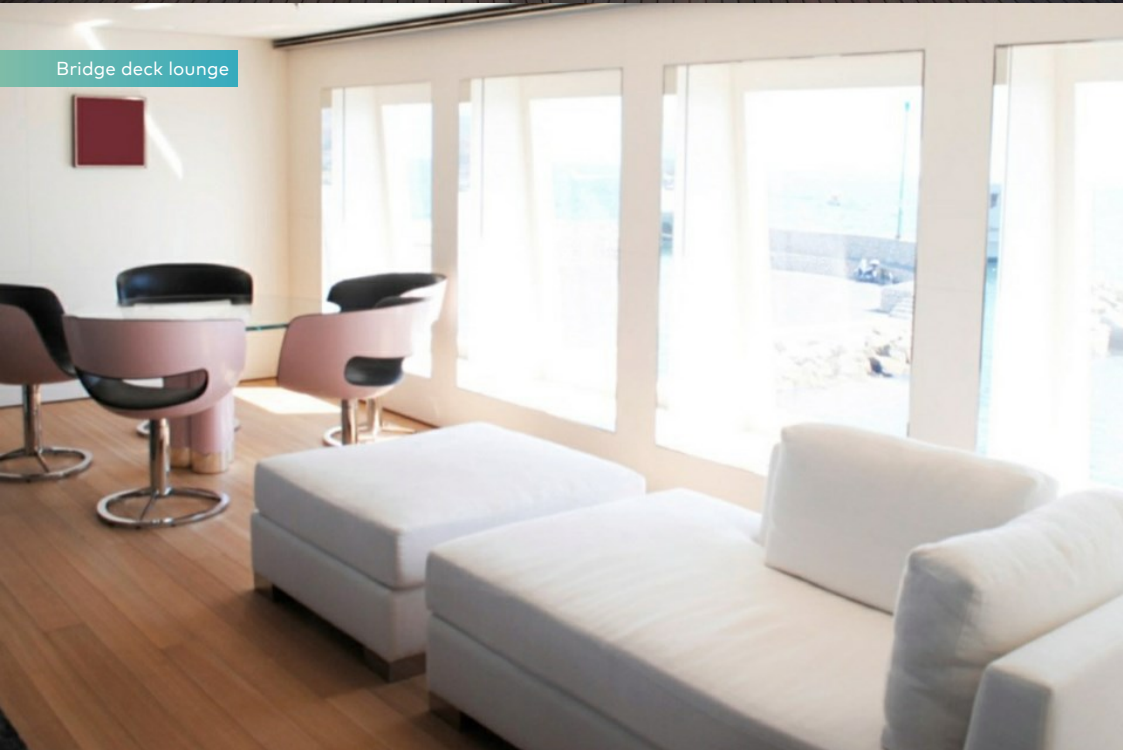
Foredeck



Main deck lounge and dining area



Bridge deck lounge



AIR

Observation lounge



Master cabin



At anchor



Foredeck



AIR

SPÉCIFICATIONS.



Longueur
81m



Chantier
2011, Feadship, De Vries, The Netherlands



Designer d'intérieur
Rémi Tessier



Largeur
11,6m



Tirant d'eau
3,6m



Tonnage brut
1 893



Vitesse de croisière
15 knots



Vitesse maximale
17 knots



Consommation de carburant en vitesse de croisière
9 000 litres par heure



Moteurs
2 x 2 360hp MTU



Invités
12

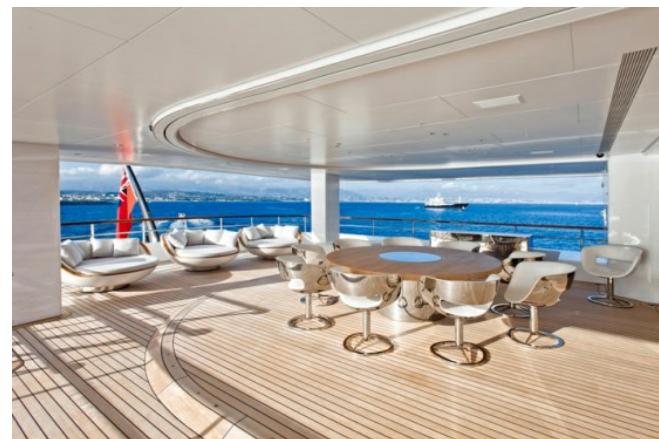


Nb de cabines invités
7 (6 x double, 1 x twin)



Équipage
22

[Voir le yacht sur le site](#)



Annexes & jeux nautiques



2 × Tenders



1 × Deck jacuzzi



Pool



Waterslide



Trampoline



RYA training centre for jetskis
& waverunners



2 × Waverunners



1 × Stand up jetski



2 × SeaBobs



6 × Kayaks



4 × Stand up paddleboards



Wakeboard



Wakesurf



Wakeskate



Kneeboard



Waterskis



Inflatable tows



Scuba diving equipment



Fishing gear



Snorkelling gear

Remise en forme & bien-être



Cross trainer



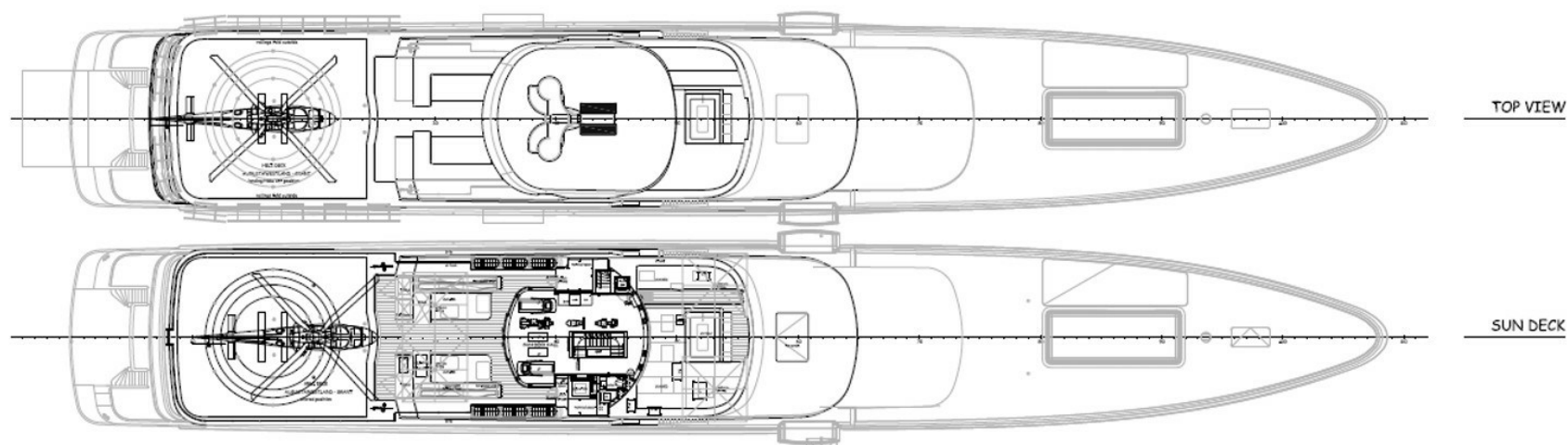
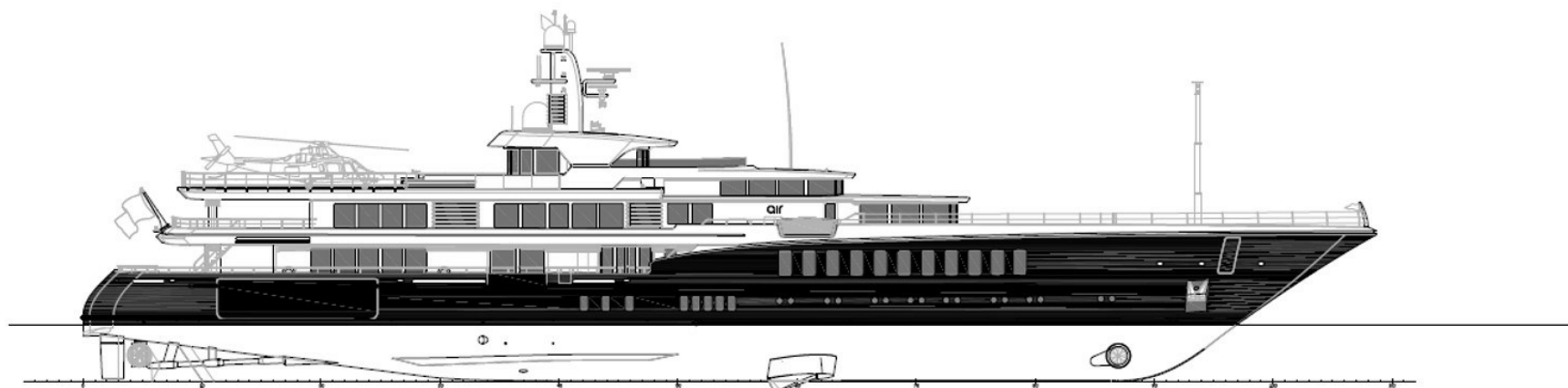
Pedal bike

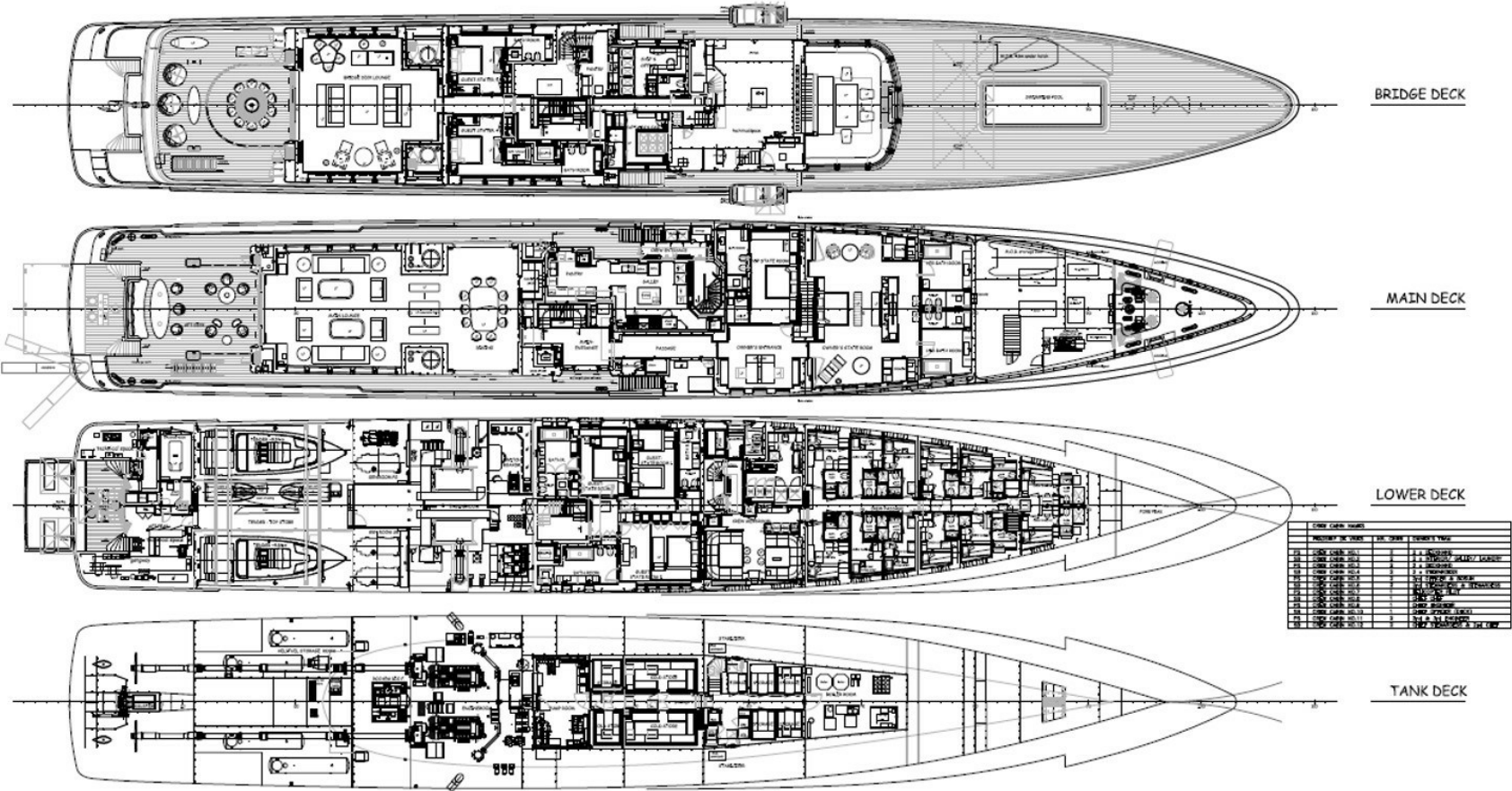


Training bench



Treadmill





BURGESS

WORLD CLASS. WORLD WIDE.

London +44 20 7766 4300	Monaco +377 97 97 81 21	New York +1 212 223 0410	Miami +1 305 672 0150	Singapore +65 9665 8990	Beverly Hills +1 310 424 5112	Palma +34 971 495 413	Athens +30 210 967 1661
	Dubai +971 4 425 5874	Phuket +66 7623 9739	Hong Kong +852 6496 2094	Tokyo +81 46 738 8612	Sydney +61 499 945 557	Mumbai +91 98211 67253	

La publicité de ce(s) navire(s) dans des publications imprimées, sur Internet ou sur tout autre support n'est pas autorisée sans l'autorisation écrite préalable de Burgess.
Toutes les informations sont données de bonne foi et sont considérées comme exactes, mais elles ne peuvent être garanties.

Dernière mise à jour : 13 mars 2024