

AIR



AIR

OVERVIEW.

AIR is the first Superyacht built under Large Yacht code to have a fully certified commercial helicopter pad. Other highlights include massage and steam rooms and a large foldable swimming platform with bar.

AIR has an exceptionally sleek and elegant exterior with modern lines, a unique matt black steel hull and an aluminium superstructure. She measures 81 meters (265.7 feet) in length and has a beam of 11.6m.

AIR's luxurious, highly sophisticated and minimalistic interior, created by Remi Tessier Design, is stunning and is enhanced by impressive artwork, large windows and open doorways. The main materials used include matt-finished sycamore, leather, matt-finished special paint, high gloss stainless steel, palladium leaf, back-lit white onyx, off-white and black limestone and a wealth of carved glass. AIR is extremely spacious and can accommodate 12 guests in 7 large staterooms including an impressive split level master suite, two guest cabins on the upper deck, one on the main deck and three on the lower deck. The owner's observation lounge boasts a breath-taking view over the eight-metre long pool on the vast main deck forward area. The magnificent sun deck offers a well-equipped gym, lounging areas aft and forward with jacuzzi, and a 102" pop-up television screen for outdoor movie viewing.

Key features

Spa facilities: massage room, steam room

Fully equipped gym

Fully certified commercial helicopter pad

Elevator to all decks

Pool on main deck forward

Jacuzzi on the sun deck

Zero speed stabilisers to reduce any rolling motion while at anchor

AIR

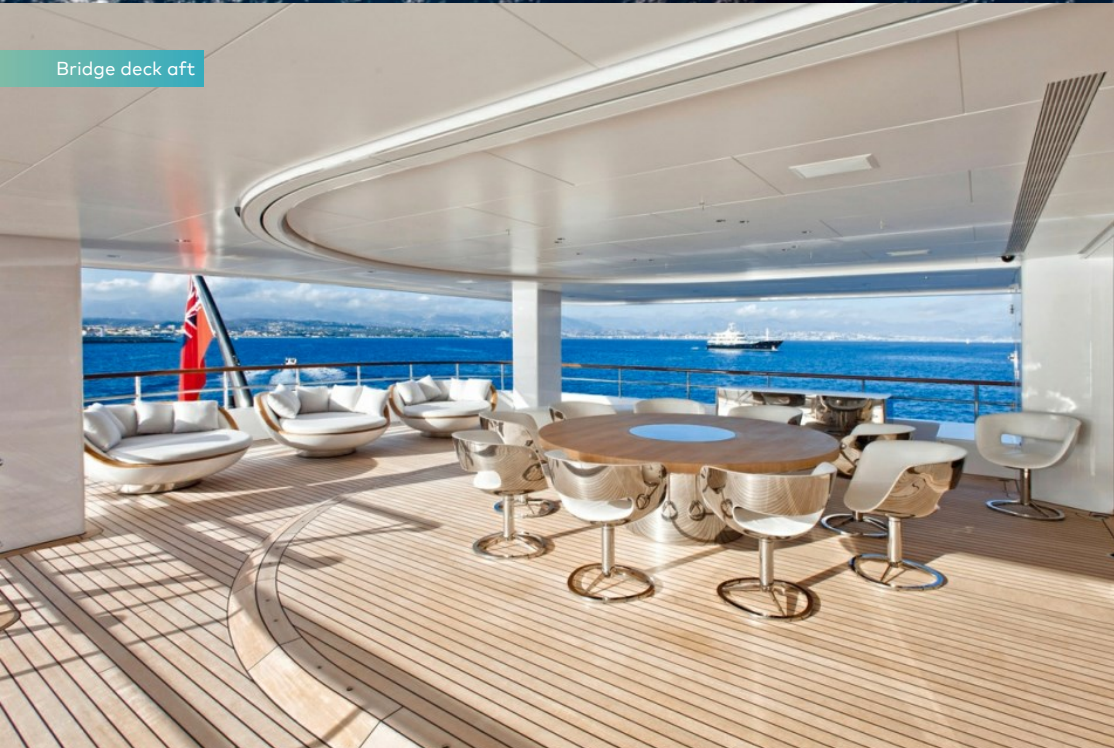
Aerial view



Sun deck jacuzzi



Bridge deck aft



Bridge deck aft dining area



BURGESS

Discover the difference.
burgessyachts.com



AIR

Main deck aft



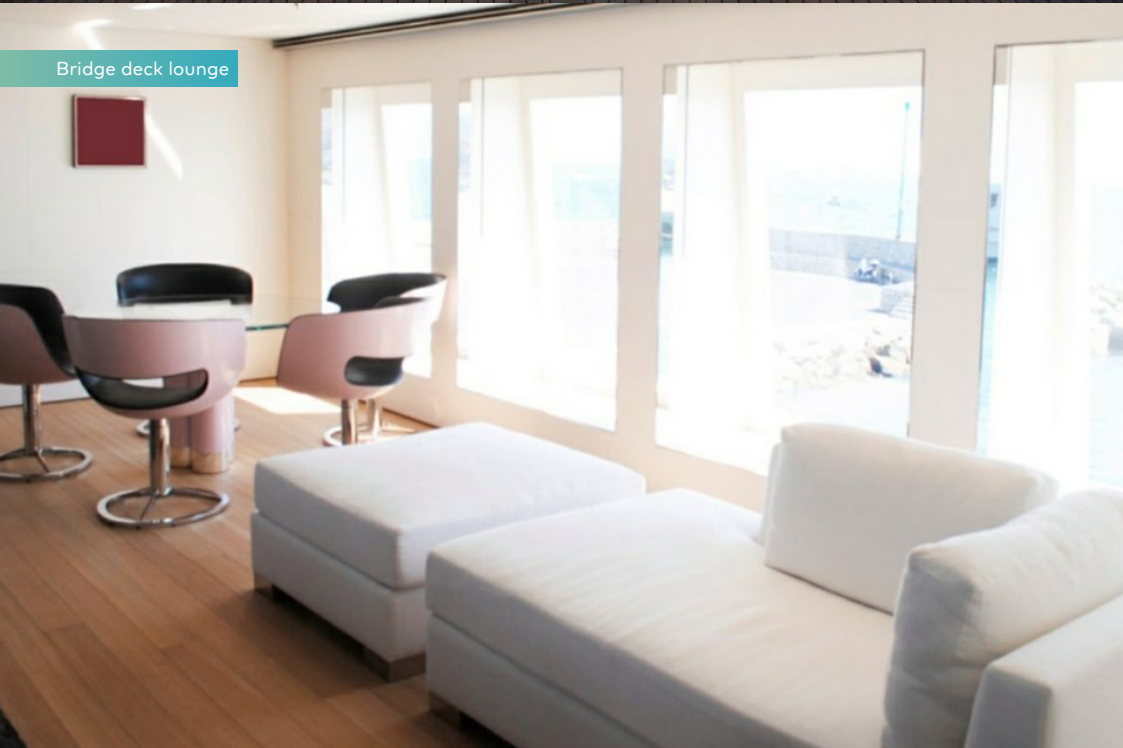
Foredeck



Main deck lounge and dining area



Bridge deck lounge



AIR

Observation lounge



Master cabin



At anchor



Foredeck



AIR

SPECIFICATION.



Length
81m (265.7ft)



Built
2011, Feadship, De Vries, The Netherlands



Interior designer
Rémi Tessier



Beam
11.6m (38ft)



Draft
3.6m (11.8ft)



Gross tonnage
1,893



Cruising speed
15 knots



Maximum speed
17 knots



Fuel consumption at cruising speed
9,000 litres per hour



Engines
2 x 2,360hp MTU



Guests
12



No. of guest cabins
7 (6 x double, 1 x twin)



Crew
22

[View yacht on website](#)



EQUIPMENT.

Tenders & toys



2 × Tenders



1 × Deck jacuzzi



Pool



Waterslide



Trampoline



RYA training centre for jetskis
& waverunners



2 × Waverunners



1 × Stand up jetski



2 × SeaBobs



6 × Kayaks



4 × Stand up paddleboards



Wakeboard



Wakesurf



Wakeskate



Kneeboard



Waterskis



Inflatable tows



Scuba diving equipment



Fishing gear



Snorkelling gear

Fitness & wellness



Cross trainer



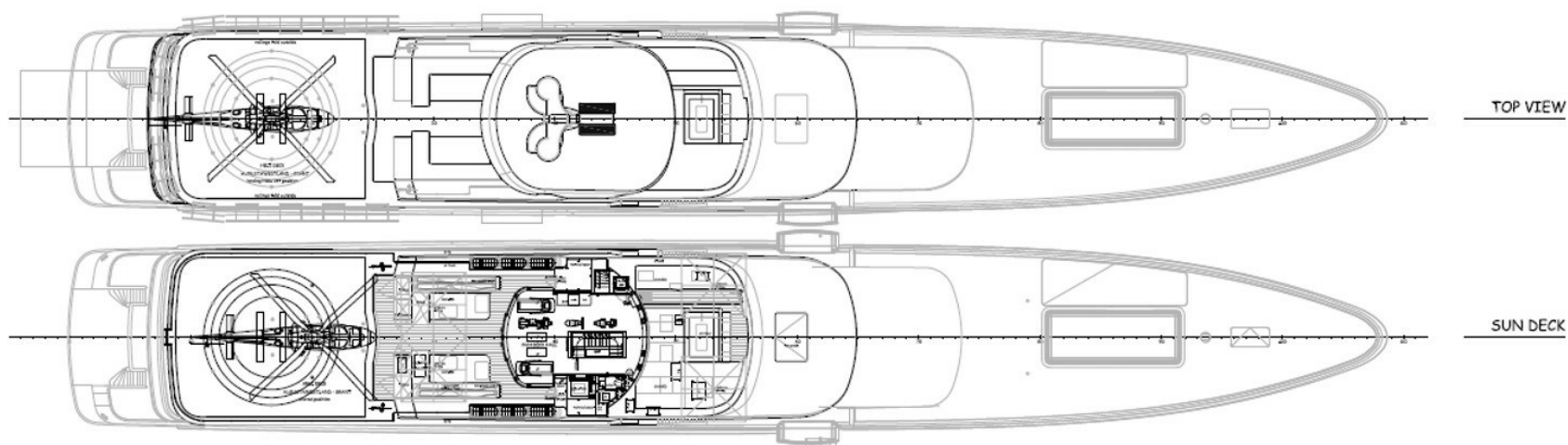
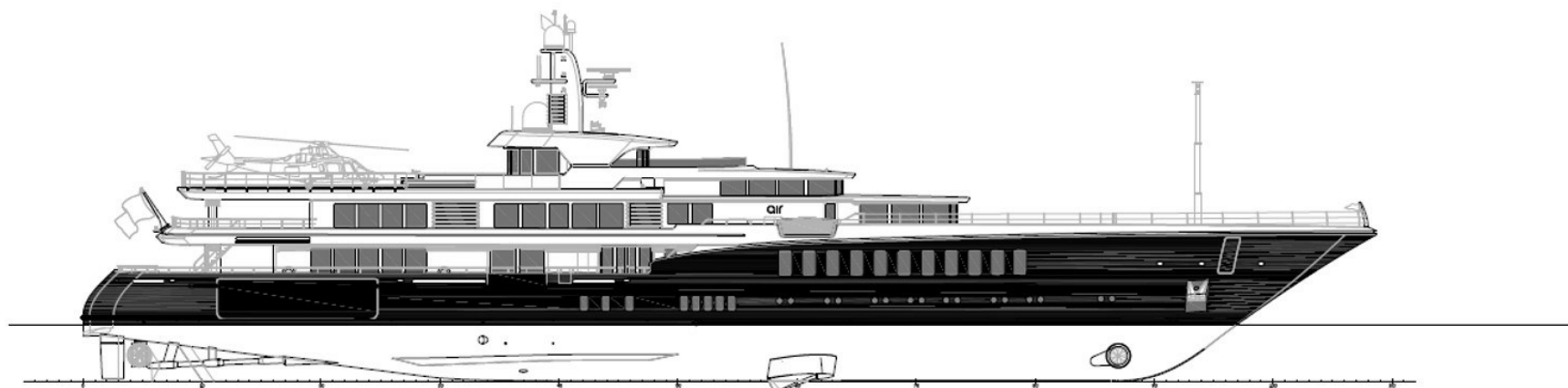
Pedal bike

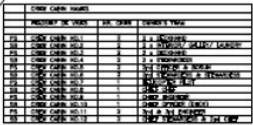


Training bench



Treadmill





BURGESS

WORLD CLASS. WORLD WIDE.

| | | | | | | | |
|----------------------------|----------------------------|-----------------------------|-----------------------------|----------------------------|----------------------------------|---------------------------|----------------------------|
| London +44 20 7766 4300 | Monaco +377 97 97 81 21 | New York +1 212 223 0410 | Miami +1 305 672 0150 | Singapore +65 9665 8990 | Beverly Hills +1 310 424 5112 | Palma +34 971 495 413 | Athens +30 210 967 1661 |
| | Dubai +971 4 425 5874 | Phuket +66 7623 9739 | Hong Kong +852 6496 2094 | Tokyo +81 46 738 8612 | Sydney +61 499 945 557 | Mumbai +91 98211 67253 | |

Advertising of these vessel(s) in printed publications, on the internet or in any other medium is not permitted without prior written permission from Burgess. All particulars are given in good faith and are believed correct but they cannot be guaranteed.

Last updated: 13 March 2024