

AD LIB



AD LIB

SPECIFICATION.



Asking price
EUR 8,750,000



Built
2006, Alloy Yachts, New Zealand



Length
40m (131.2ft)



Beam
8.5m (27.8ft)



Draft
1.9m (6.2ft)



Gross tonnage
294



Cruising speed
13 knots



Maximum speed
16.5 knots



Range
2,530 nm



Flag
Cayman Islands



Lying
West Mediterranean



Class
Lloyds 100 A1 SSC Motor Yacht Mono G6 LMC,
MCA compliant



Exterior designer
Dubois Naval Architects



Interior designer
Donald Starkey



Construction
Hull - Aluminium, Superstructure - Aluminium,
Deck - Teak



Crew
6



Guests
9



Cabins
4 (3 x double, 1 x twin, 1 x additional berths)



Engines
2 x 1,450hp Caterpillar



Propulsion
Twin screw diesel yacht

Note

Not available for sale to US residents while in US waters.

[View yacht on website](#)



AD LIB



BURGESS

Discover the difference.
burgessyachts.com



AD LIB



AD LIB



AD LIB



BURGESS

Discover the difference.
burgessyachts.com



AD LIB



BURGESS

Discover the difference.
burgessyachts.com



AD LIB



BURGESS

Discover the difference.
burgessyachts.com



AD LIB

OVERVIEW.

AD LIB is a 40m (131.2ft) displacement motor yacht built by the renowned New Zealand shipyard Alloy Yachts in 2006. She has an aluminium hull and superstructure, with an exterior design by Ed Dubois and interior by Donald Starkey. AD LIB was built to Lloyd's Register classification and has been used privately under her original owner.

AD LIB can accommodate 9 guests in four cabins. The guest accommodation is on the lower deck. It comprises two double-berth suites and one twin-berth cabin with additional pullman berth. All guest cabins have en suite bathrooms with separate shower compartments. Port forward is a designated gym area. Forward of the guest accommodation is the galley, crew mess and accommodation for six crew. On the main deck, the owner's suite is forward. It has sofa seating to starboard and is accessed via the owner's private office. Forward, the suite has separate his and hers en suite bathrooms with a shared central shower room. Aft in the suite is a large dressing room. Moving aft from the office, steps lead to the raised wheelhouse and onto the flybridge. In the main salon, there is a formal dining area forward and a lounge area to the rear. A bistro table and chairs sit at the saloon entrance from the aft deck.

On her sun deck, AD LIB has a forward flybridge area with forward-facing bench seating and steps to the wheelhouse. Aft is a hardtop – with skylight windows in the forward section. Beneath the hardtop is situated an al fresco dining area with bench seating running outboard on both sides. Towards the rear is a wet bar and BBQ area while on the aft deck is a jacuzzi and sunpad area. Steps to starboard lead to the main deck. The aft main deck features a formal al fresco dining area with forward-facing seating to the rear. Overhead, is a retractable sun awning. A wet bar area is located by the main saloon entrance. There is a large raised sunpad area forward, accessed via steps from the foredeck.

AD LIB has a side-opening tender garage whilst on the foredeck is located the rescue tender and waverunner.

She is powered by two 1,450 hp Caterpillar 3412E engines these give her a cruising speed of 13 knots and a maximum speed of 16 knots. She has a cruising range of approximately 4,500nm at an economical speed of 10 knots and is fitted with NAIAD zero speed stabilisers.

Key features

Accommodation for 9 guests in four cabins

Spacious flybridge area with dining, jacuzzi and wet bar

Private use under original owner

Full beam master cabin with private office, his and hers bathrooms, and walk-in wardrobe

Side opening tender garage

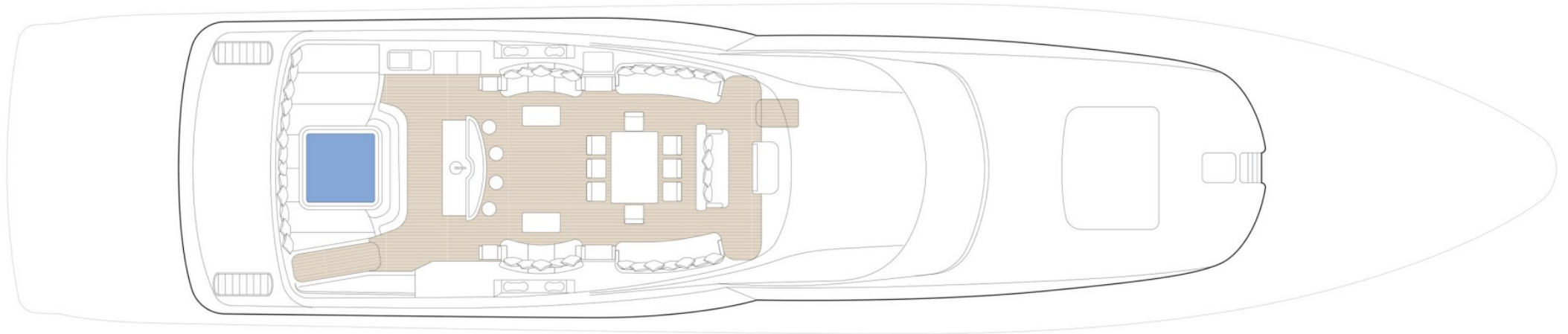
Private use under original owner

Lloyd's Register classification

Tenders

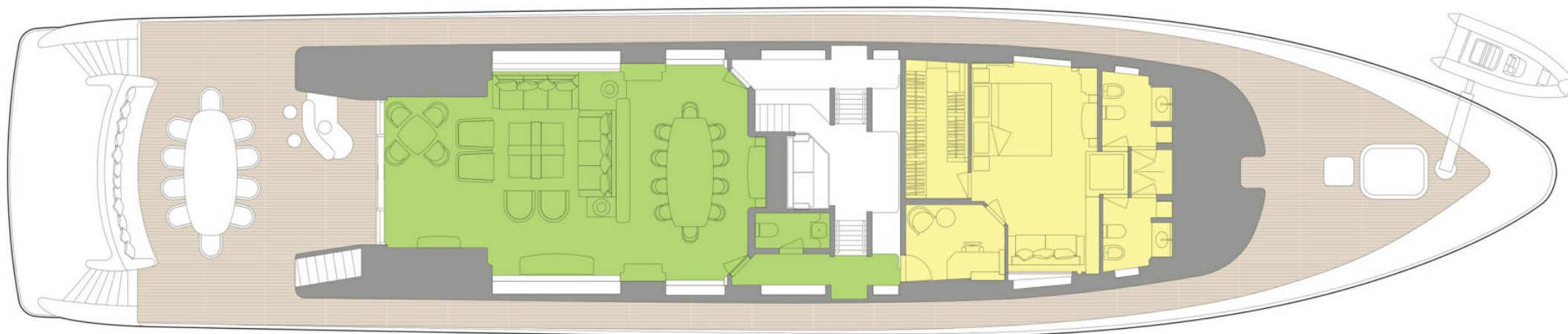
1 x BSC 6.6m RIB with 250 HP Yamaha outboard

SUN DECK



■ GUEST AREAS ■ MASTER SUITE ■ GUEST CABINS ■ GYM ■ JACUZZI

MAIN DECK



- GUEST AREAS
- MASTER SUITE
- GUEST CABINS
- GYM
- JACUZZI

LOWER DECK



■ GUEST AREAS ■ MASTER SUITE ■ GUEST CABINS ■ GYM ■ JACUZZI

BURGESS

WORLD CLASS.
WORLD WIDE.

London +44 20 7766 4300	Monaco +377 97 97 81 21	New York +1 212 223 0410	Miami +1 305 672 0150	Singapore +65 9665 8990	Beverly Hills +1 310 424 5112	Palma +34 971 495 413	Athens +30 210 967 1661
Dubai +971 4 425 5874	Phuket +66 7623 9739	Hong Kong +852 6496 2094	Tokyo +81 46 738 8612	Sydney +61 499 945 557	Mumbai +91 98211 67253	Shanghai +86 187 0898 6800	

Advertising of these vessel(s) in printed publications, on the internet or in any other medium is not permitted without prior written permission from Burgess. All particulars are given in good faith and are believed correct but they cannot be guaranteed.

Last updated: 17 April 2024